



SHIBLI

SF - 12



WASHING INSRUCTIONS

DO NOT USE TYPE OF BLEACH OR STAIN REMOVING CHEMICALS
 BEFORE CUTTING / STITHING , FABRIC SHOULD BE SMOKED BE SOAKED IN WATER
 (ALL COMPONENTS SEPARATELY) FOR 15 MINUTES
 DO BOT KEEP WET FABRIC IN TWISTED FROM IN ORDER TO AVOID COPY MARKS I
 IRON CLOTHES AT MODRATE TEMPERATURE I DO NOT DRY FABRIC IN DIRECT SUNLIGHT
 (EXTRA LACES, HANGINGSAND ACCESSORIES ARE NOT INDUDED)



SHIBLI



SHIBLI

SHIBLI





SHIBLITM

SHIBLI

SHIBLITM





SHIBLI

SF - 12 B



WASHING INSTRUCTIONS

DO NOT USE TYPE OF BLEACH OR STAIN REMOVING CHEMICALS
 BEFORE CUTTING / STITCHING, FABRIC SHOULD BE SOAKED IN WATER
 (ALL COMPONENTS SEPARATELY) FOR 15 MINUTES
 DO NOT KEEP WET FABRIC IN TWISTED FORM IN ORDER TO AVOID COPY MARKS I
 IRON CLOTHES AT MODERATE TEMPERATURE I DO NOT DRY FABRIC IN DIRECT SUNLIGHT
 (EXTRA LACES, HANGINGS AND ACCESSORIES ARE NOT INCLUDED)



SHIBLI

SF - 12 C



WASHING INSRUCTIONS

DO NOT USE TYPE OF BLEACH OR STAIN REMOVING CHEMICALS
 BEFORE CUTTING / STITHING , FABRIC SHOULD BE SMOKED BE SOAKED IN WATER
 (ALL COMPONENTS SEPARATELY) FOR 15 MINUTES
 DO BOT KEEP WET FABRIC IN TWISTED FROM IN ORDER TO AVOID COPY MARKS I
 IRON CLOTHES AT MODRATE TEMPERATURE I DO NOT DRY FABRIC IN DIRECT SUNLIGHT
 (EXTRA LACES, HANGINGSAND ACCESSORIES ARE NOT INDUDED)



SHIBLI

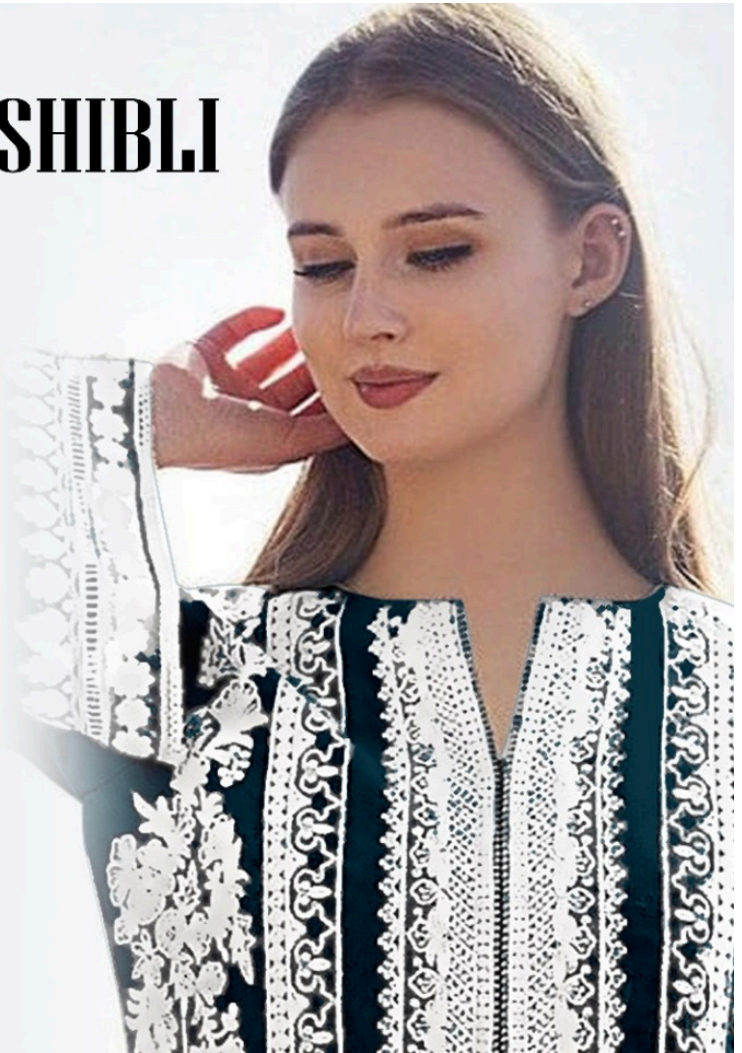
SF - 12 D



WASHING INSRUCTIONS

DO NOT USE TYPE OF BLEACH OR STAIN REMOVING CHEMICALS
 BEFORE CUTTING / STITHING , FABRIC SHOULD BE SMOKED BE SOAKED IN WATER
 (ALL COMPONENTS SEPARATELY) FOR 15 MINUTES
 DO BOT KEEP WET FABRIC IN TWISTED FROM IN ORDER TO AVOID COPY MARKS I
 IRON CLOTHES AT MODRATE TEMPERATURE I DO NOT DRY FABRIC IN DIRECT SUNLIGHT
 (EXTRA LACES, HANGINGSAND ACCESSORIES ARE NOT INDUDED)

SHIBLI



GARMENT DETAILS

DESCRIPTION

HAVEY FOX GEORGETTE
BOTTOM :- COTTON
DUPATA :- ORIGINAL SHIFFON

SF - 12





SHIBLI

SF - 12



WASHING INSRUCTIONS

DO NOT USE TYPE OF BLEACH OR STAIN REMOVING CHEMICALS
 BEFORE CUTTING / STITHING , FABRIC SHOULD BE SMOKED BE SOAKED IN WATER
 (ALL COMPONENTS SEPARATELY) FOR 15 MINUTES
 DO BOT KEEP WET FABRIC IN TWISTED FROM IN ORDER TO AVOID COPY MARKS I
 IRON CLOTHES AT MODRATE TEMPERATURE I DO NOT DRY FABRIC IN DIRECT SUNLIGHT
 (EXTRA LACES, HANGINGSAND ACCESSORIES ARE NOT INDUDED)



SHIBLI

SF - 12 A



WASHING INSRUCTIONS

DO NOT USE TYPE OF BLEACH OR STAIN REMOVING CHEMICALS
 BEFORE CUTTING / STITHING , FABRIC SHOULD BE SMOKED BE SOAKED IN WATER
 (ALL COMPONENTS SEPARATELY) FOR 15 MINUTES
 DO BOT KEEP WET FABRIC IN TWISTED FROM IN ORDER TO AVOID COPY MARKS I
 IRON CLOTHES AT MODRATE TEMPERATURE I DO NOT DRY FABRIC IN DIRECT SUNLIGHT
 (EXTRA LACES, HANGINGSAND ACCESSORIES ARE NOT INDUDED)