



**ATTIRE OF MARVEL**  
As we've seen from the pages before this, these are not just sarees. They are your instruments to make the world go round to your charm. What are you waiting for? Deck yourselves and embellish your spirit with our attractive creations.



4375



**THE  
UNIVERSAL GRACE**

Her gaze knows no boundaries. Her elegance knows no limits. Her charm is a source of inspiration and wonderment across the world. Looking simply divine in her matchless attire, she rules the world with her smile. Her admirers follow, entranced.







# ETERNAL MAGIC

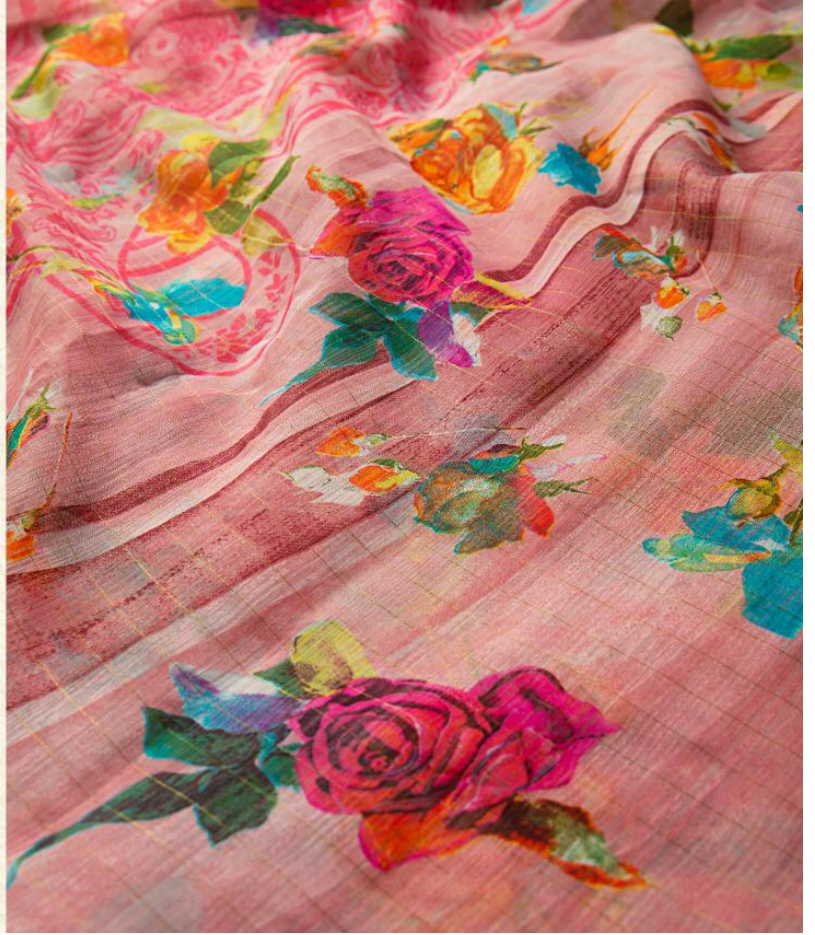
Fads fade. Styles wither. Tastes change.  
But she smiles, unbothered. She has mas-  
tered the art of eternal beauty. Her attire  
has been designed to outlive the vagaries  
of the fashion world, and remains sculpted  
forever in the hearts and minds of those  
who behold her.

4373





Many claim to understand fashion, but only a few understand style. And she settles for nothing but world-class fabrics at all times! No wonder then that only the greatest masters from the kingdom of style work on making her looking breathtaking. This is one such creation from one such master.







## THE TREE OF ETERNITY

Styles change. Fads come and go. Trends are volatile and unpredictable. But true fashion is eternal. Such is engraved on the tree of eternity deep within the Garden of Magic. In your amazing sari, you gaze upon this piece of wisdom and marvel at its accuracy.





Shangrila



THE  
WORSHIP OF DESIRE

Countless devotees flock to you to bow  
their heads in obedience to you. You are  
not simply their queen, you are their god-  
dess. You show them that the world still  
has a vestige of beauty left. Little do you  
know, that everyone present in head over  
heels in love with you.

4371





**THE  
SYMBOL OF PURITY**

The world touches and tarnishes every-  
thing within its confines on daily basis.  
Clad in your white sari, you offer resis-  
tance. Every blemish it tries to inflict upon  
you is deflected by your virtue. You are the  
eternal symbol of purity.

4374


A woman in a pink floral saree stands against a dark, floral-patterned background. The saree has a long, flowing pallu. The image is framed with a dark border.

**PICTURE OF MAJESTY**

Why should royalty be dressed in anything short of regal? When you carry yourself with grace and poise, when the world bows to your command, when a whole kingdom of besotted men are ready to go to battle for you; all you need is this breathtaking dress. Our exquisite touch makes the picture simply perfect.

4377









The patterns, hues, shades and contours at work here have been designed by the very masters of the land. Some say that the craftsman went mad and did not wish to part with his magnum opus. When asked why, he said / my greatest creation needs to be worn only by angels.





All at once the season of winter passes, and we greet the onset of spring. With the chirping of birds and the fragrance of flowers, with fruits hanging from every tree. Get into the spirit by adorning our special sari; and be as one with the universe.







# THE SUBLIME OCHRE

Thousands flock to Rajasthan year after year to experience the allure of this land. But while glimpsing the many sights on offer, they sometimes stop and stare. That is when they gaze at her! And then they forget about the lay of the land, and gaze expectantly upon her.

4381











**PICTURE OF POISE**

Every photographer across the world is flummoxed. Their lenses can only capture a fraction of her beauty. Because her charm is so all encompassing, so magnificent, so profound...the most skilled photographers fall short. Most blame her saree...



4382





*Aradhana Cotton*  
Vol.2





4371



4372



4373



4377



4378



4379



4374



4375



4376



4380



4381



4382





*Aradhana Cotton*  
Vol.2