

MOHMANTHAN™

Royal



NURVI

MOHMANTHAN™

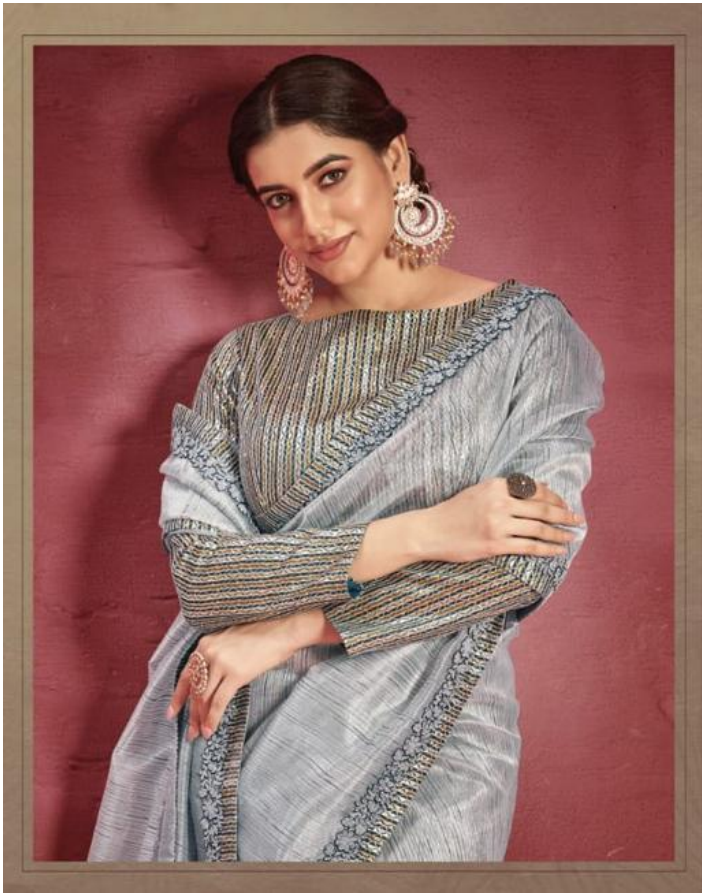
Royal



NURVI



22504
Fabric: Patterned Organza
Jacquard Ready-To-Wear Blouse





22509
Fabric : Satin Silk Georgette
Accessories With : A Designer Belt



22508
Fabric : Patterned Organza
Collar Sequins Ready-To-Wear Blouse
Accessories with : A Designer Belt







THE WORLD'S LARGEST AND MOST DIVERSE SUPERHERO FRANCHISE IS JOINING COCA-COLA BOTTLES, GLAD IN YOUR HANDS. FOLLOWING REVEALED: SUPER'S SECRET 75% TO 100% SUGAR. YOU'VE BEEN CHOSEN TO BE A SUPERHERO. YOU'VE BEEN CHOSEN TO BE A SUPERHERO. YOU'VE BEEN CHOSEN TO BE A SUPERHERO.



Fabric : Silk Crepe
Embroidered Ready-To-Wear Blouse
Accessorized with : A Designer Belt



WILDERNESS
OF LOVE

A CREATION DESIGNED TO BRING YOU IN TOUCH WITH YOUR TRUE SELF. TO OFFER THE WORLD WITH
PURE SASSY, ANTIQUITY FOR THE BELLE, MODERN, CONFIDENT WOMAN. THIS IS THE PERFECT DRESS.

A full-body photograph of the same woman sitting on a set of red steps, wearing the same teal saree. The image is framed within a larger beige border that contains the title and a short paragraph.

| DESIGN NO | SAREE FABRIC | BLOUSE FABRIC | Saree WORK | Blouse Work | CUSTZ.(SEMISTITCH/UN-STITCH) | BLOUSE LENGTH |
|-----------|---------------------------------|---------------|---|-------------------------|------------------------------|--------------------------------------|
| 22500 | Net Organza | Raw Silk | Solid Saree with Flared Lace on Pallu and Border | Heavy Embroidered | Stitched Blouse | up to 38 Inch with margin of 42 inch |
| 22501 | Satin Silk georgette | Raw Silk | Tie Dye Print with Embroidered Lace | Heavy Embroidered | Stitched Blouse | up to 38 Inch with margin of 42 inch |
| 22502 | Patterned Silk Organza | Gota Silk | Stripe Printed and Lace border with Tassel Work | Stripe Design Blouse | Stitched Blouse | up to 38 Inch with margin of 42 inch |
| 22503 | Crepe Silk Georgette | Raw Silk | Solid Saree with Heavy Lace Border | Stripe Sequence Work | Stitched Blouse | up to 38 Inch with margin of 42 inch |
| 22504 | Patterned Jacquard Organza | Gota Silk | Stripe Printed and Lace border with Tassel Work | Stripe Sequence Work | Stitched Blouse | up to 38 Inch with margin of 42 inch |
| 22505 | Satin Silk Georgette | Raw Silk | Tie Dye Print with Embroidered Lace | Heavy Embroidered | Stitched Blouse | up to 38 Inch with margin of 42 inch |
| 22506 | Patterned Jacquard Organza | Raw Silk, Net | Stripe Printed and Embroidered Lace border with Tassel Work | Stripe Sequence Work | Stitched Blouse | up to 38 Inch with margin of 42 inch |
| 22507 | Tie-Dye Crepe Georgette | Raw Silk | Tie Dye Print with Embroidered Lace | Heavy Embroidered | Stitched Blouse | up to 38 Inch with margin of 42 inch |
| 22508 | Patterned Organza | Raw Silk | Printed and Embroidered Lace border with Heavy Embroidery | Stripe Sequence Work | Stitched Blouse | up to 38 Inch with margin of 42 inch |
| 22509 | Satin Silk Georgette | Raw Silk | Tie Dye Print with Embroidered Lace | Heavy Embroidered | Stitched Blouse | up to 38 Inch with margin of 42 inch |
| 22510 | Patterned Jacquard Organza | Raw Silk | Printed and Embroidered Lace border with Heavy Embroidery | Stripe Sequence Work | Stitched Blouse | up to 38 Inch with margin of 42 inch |
| 22511 | Crepe Georgette | Raw Silk | Solid Saree with Sequence Work on Border and pallu | Sequence Work | Stitched Blouse | up to 38 Inch with margin of 42 inch |
| 22512 | Silk Crepe | Raw Silk | Floral Heavy Embroidered Work | Floral Embroidered Work | Stitched Blouse | up to 38 Inch with margin of 42 inch |
| 22513 | Crush Silk with crepe Georgette | Raw Silk | Floral Heavy Embroidered Work | Floral Embroidered Work | Stitched Blouse | up to 38 Inch with margin of 42 inch |

MAHOTSAV GROUP PRESENTS
MOHMANTHAN-Royal
"NURVI"

| DESIGN NO. | DESCRIPTION | PRICE |
|--|----------------|-------|
| 22500 | DESIGNER SAREE | 2785 |
| 22501 | DESIGNER SAREE | 2315 |
| 22502 | DESIGNER SAREE | 2605 |
| 22503 | DESIGNER SAREE | 2825 |
| 22504 | DESIGNER SAREE | 2585 |
| 22505 | DESIGNER SAREE | 2315 |
| 22506 | DESIGNER SAREE | 2625 |
| 22507 | DESIGNER SAREE | 2375 |
| 22508 | DESIGNER SAREE | 2475 |
| 22509 | DESIGNER SAREE | 2345 |
| 22510 | DESIGNER SAREE | 2525 |
| 22511 | DESIGNER SAREE | 2375 |
| 22512 | DESIGNER SAREE | 2475 |
| 22513 | DESIGNER SAREE | 2475 |
| NOTE : GST@5% WILL BE CHARGED ON THE ABOVE PRICES. | | |



PASSAGE TO PERFECTION

YOU ARE A JOURNEY. YOUR GAIN INSPIRES OUR REVEAL. YOU TAKE OUR NAVIGATION AND PLANNED PATTERN AND TRAIL.
BEING UNEXPECTED, MAKING EVERY THING OF YOUR AMBIGUOUSITY BECOMES YOUR PROMISE TO BE FOR US. TO BE
IN WITH A BRILLIANT NEW HISTORY





22511

Fabric : Crepe Georgette
Bark Sequins Ready-to-Wear Blouse
Accessorized with : A Designer Belt



22500
Fabric: Net Organza
Ready-to-wear Blouse



22501
Fabric: Satin Silk Georgette
Embroidered Ready-to-wear Blouse
Accessorized with: A Designer Belt



22502
Fabric: Patterned Silk Organza
Jacquard Ready-to-wear Blouse



22507
Fabric: Tin Dye Crepe Chantilly
Unbordered Ready-to-wear Blouse
Accessorized with: A Designer Belt



22508
Fabric: Patterned Organza
Coca Sequins Ready-to-wear Blouse



22509
Fabric: Satin Silk Georgette
Accessorized with: A Designer Belt



22510
Fabric: Patterned Organza
Jacquard Ready-to-wear Blouse



22503
Fabric: Crepe Silk Georgette
Jacquard Ready-to-wear Blouse
Accessorized with: A Designer Belt



22504
Fabric: Patterned Organza
Jacquard Ready-to-wear Blouse



22505
Fabric: Satin Silk Georgette
Embroidered Ready-to-wear Blouse



22506
Fabric: Patterned Organza
Jacquard Ready-to-wear Blouse



22511
Fabric: Crepe Georgette
Kata Sequins Ready-to-wear Blouse
Accessorized with: A Designer Belt



22512
Fabric: Silk Crepe
Embroidered Ready-to-wear Blouse
Accessorized with: A Designer Belt



22513
Fabric: Crum Silk with Crepe Georgette
Embroidered Ready-to-wear Blouse
Accessorized with: A Designer Belt