



V-17015



V-17015 D



V-17015 E

**Fepic**®

 :\_Fepic

 :\_Fb.com/Fepic11



V-17015



V-17015 D



V-17015 E

**Fepic**®

 :\_Fepic

 :\_Fb.com/Fepic11





V-17015



V-17015 D



V-17015 E

**Fepic**®

 :\_Fepic

 :\_Fb.com/Fepic11





#### WASHING INTRUCTIONS

DO NOT USE ANY TYPE OF BLEACH OR STAIN REMOVING CHEMICALS  
BEFORE CUTTING / STITCHING, FABRIC SHOULD BE SOAKED IN WATER  
( ALL COMPONENTS SEPARATELY ) FOR 15 MINUTES  
DO NOT KEEP WET FABRIC IN TWISTED FROM IN ORDER TO AVOID COPY MARKS |  
WASH COLOURED AND WHITE FABRICS SEPARATELY  
IRON CLOTHES AT MODERATE TEMPERATURE | DO NOT DRY FABRIC IN DIRECT SUNLIGHT  
( EXTRA LACES, HANGINGS AND ACCESSORIES ARE NOT INLUDED )

V-17015

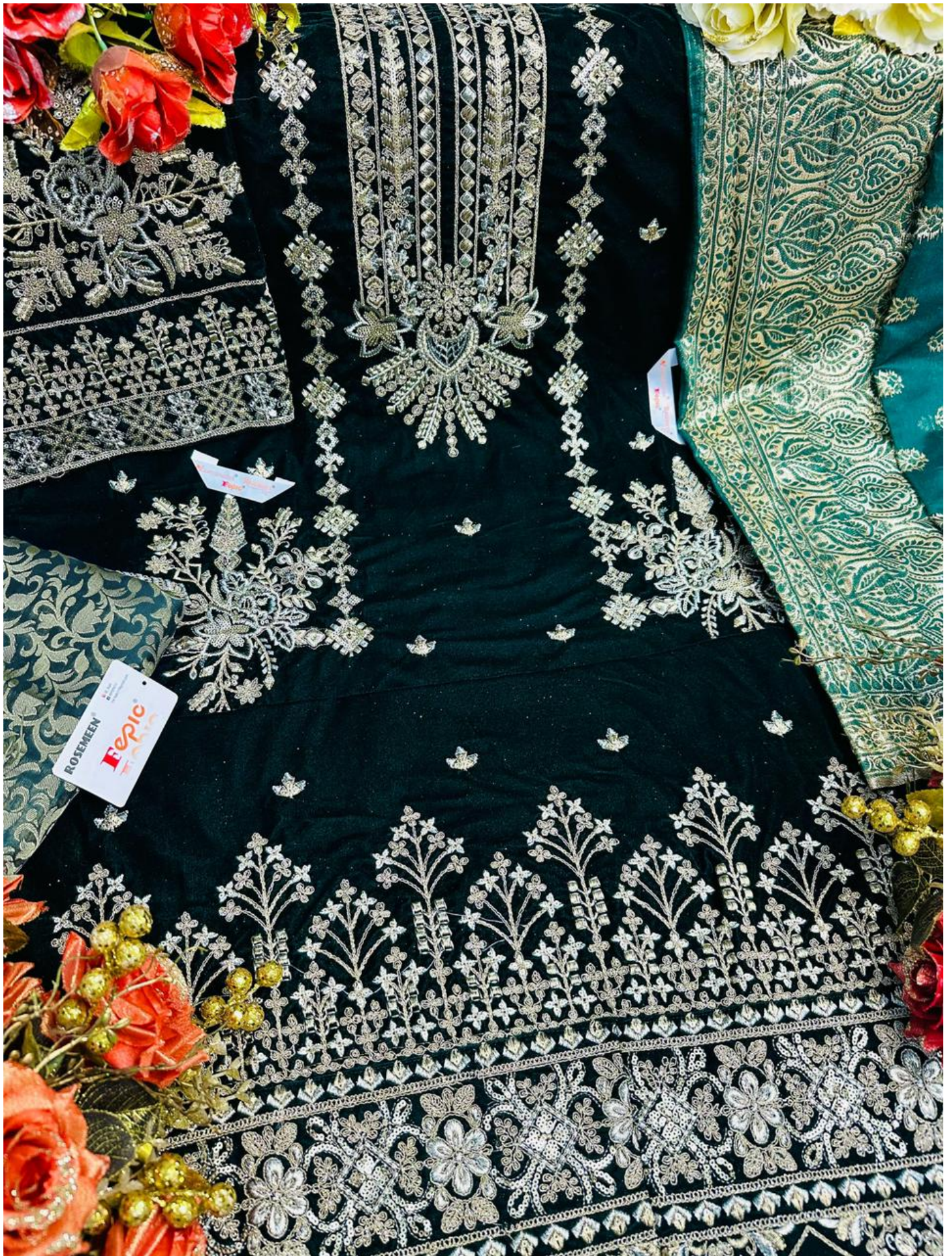
*Velvet*  
COLLECTION



**Fepic®**











#### WASHING INTRUCTIONS

DO NOT USE ANY TYPE OF BLEACH OR STAIN REMOVING CHEMICALS  
BEFORE CUTTING / STITCHING, FABRIC SHOUD BE SOAKED BE SOAKED IN WATER  
( ALL COMPONENTS SEPARATELY ) FOR 15 MINUTES  
DO NOT KEEP WET FABRIC IN TWISTED FROM IN ORDER TO AVOID COPY MARKS |  
WASH COLOURED AND WHITE FABRICS SEPARATELY  
IRON CLOTHES AT MODERATE TEMPERATURE | DO NOT DRY FABRIC IN DIRECT SUNLIGHT  
( EXTRA LACES, HANGINGS AND ACCESSORIES ARE NOT INDUED )

V-17015 E

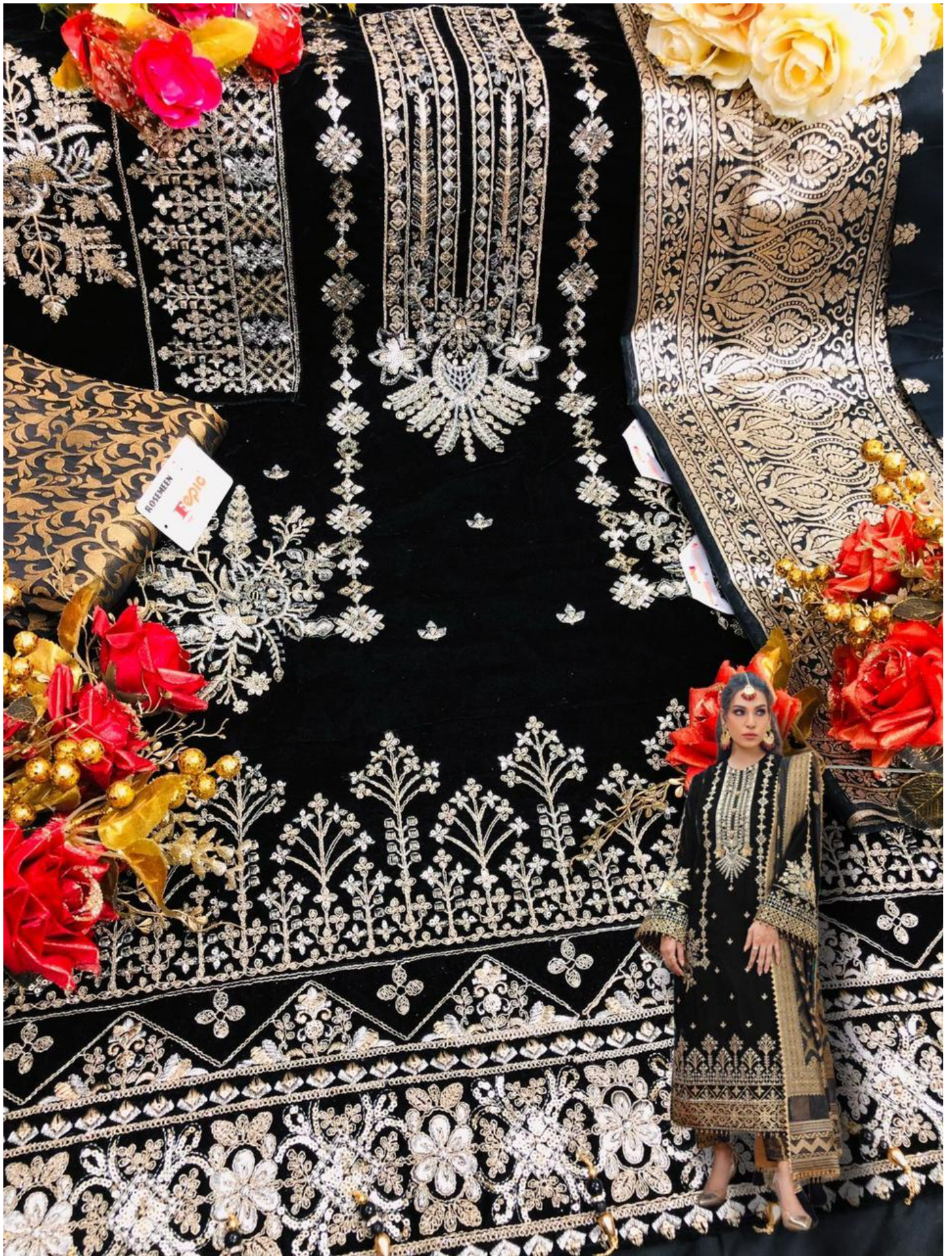
*Velvet*  
COLLECTION



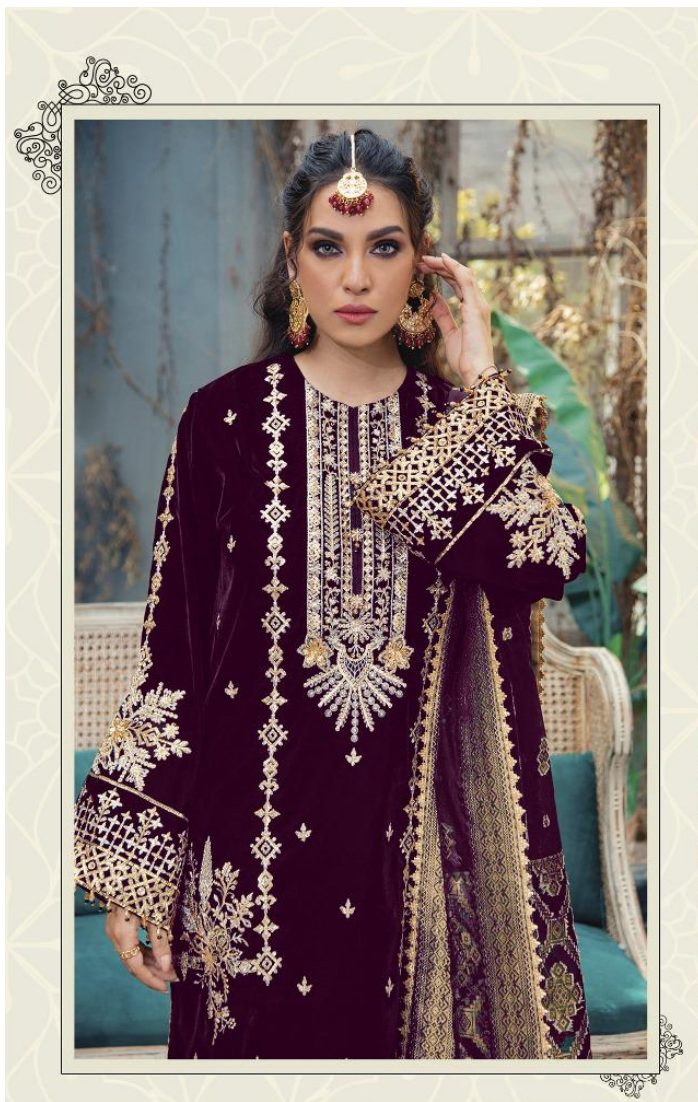
**Fepic®**











#### WASHING INTRUCTIONS

DO NOT USE ANY TYPE OF BLEACH OR STAIN REMOVING CHEMICALS  
BEFORE CUTTING / STITCHING, FABRIC SHOULD BE SOAKED IN WATER  
( ALL COMPONENTS SEPARATELY ) FOR 15 MINUTES  
DO NOT KEEP WET FABRIC IN TWISTED FORM IN ORDER TO AVOID COPY MARKS |  
WASH COLOURED AND WHITE FABRICS SEPARATELY  
IRON CLOTHES AT MODERATE TEMPERATURE | DO NOT DRY FABRIC IN DIRECT SUNLIGHT  
( EXTRA LACES, HANGINGS AND ACCESSORIES ARE NOT INCLUDED )

V-17015 D

*Velvet*  
COLLECTION



