





HF-879



HF-867

Top :- Heavy Satin

Bottom :- Heavy Satin



HOOR TEX

CARE INSTRUCTIONS

DRY CLEAN RECOMMENDED
DO NOT USE ANY TYPE OF BLEACH OR STAIN REMOVING CHEMICALS
DO NOT OVER EXPOSE DAMP FABRIC TO STRONG SUNLIGHT
IRON AT MODERATE TEMPERATURE



HF-880



HF-864

Top :- Heavy Satin

Bottom :- Heavy Satin



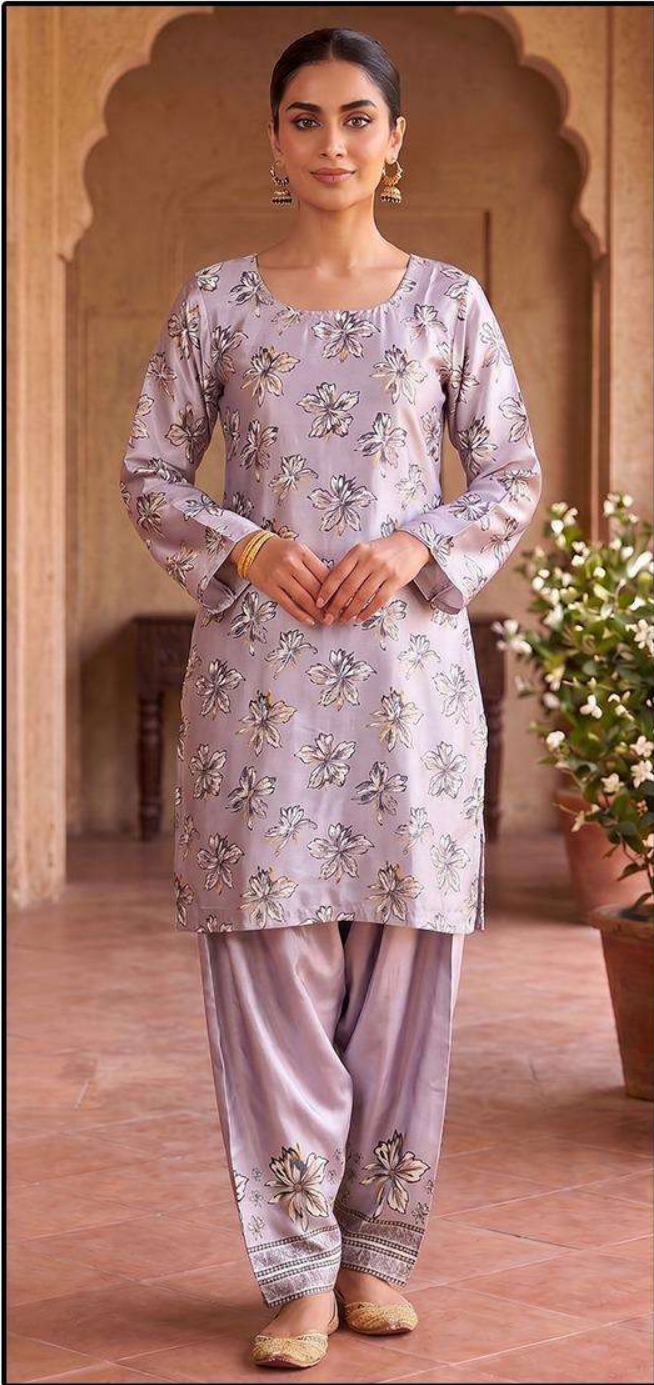
HOOR TEX

CARE INSTRUCTIONS

DRY CLEAN RECOMMENDED
DO NOT USE ANY TYPE OF BLEACH OR STAIN REMOVING CHEMICALS
DO NOT OVER EXPOSE DAMP FABRIC TO STRONG SUNLIGHT
IRON AT MODERATE TEMPERATURE



HF-864



HF-879

Top :- Heavy Malai Satin

Bottom :- Heavy Malai satin

CARE INSTRUCTIONS

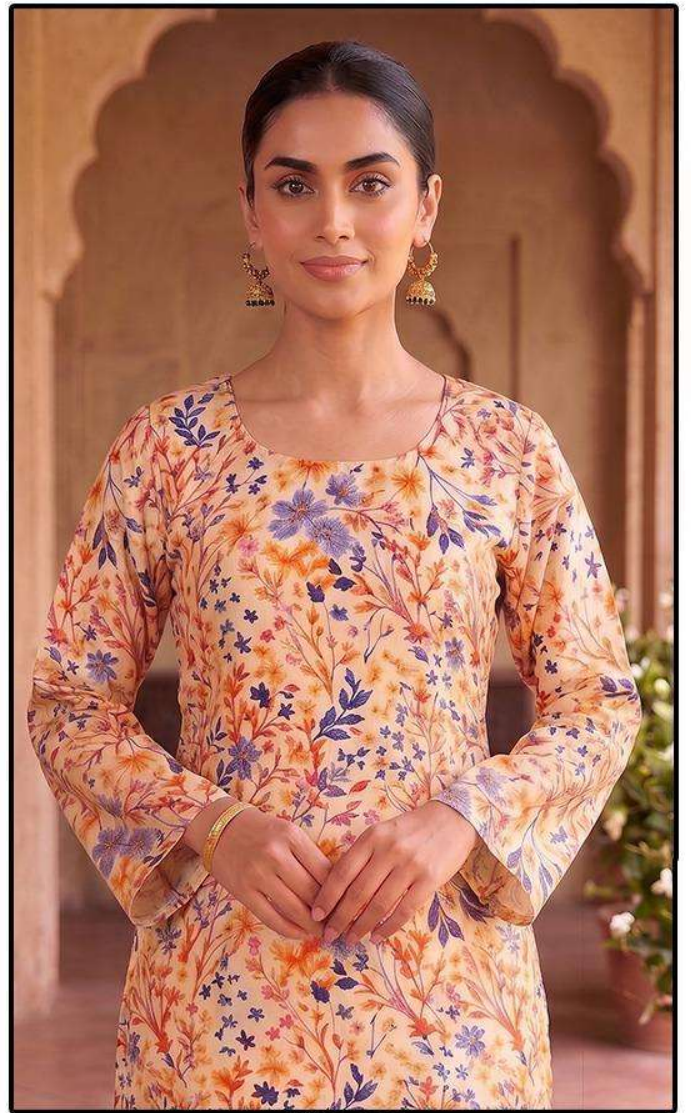
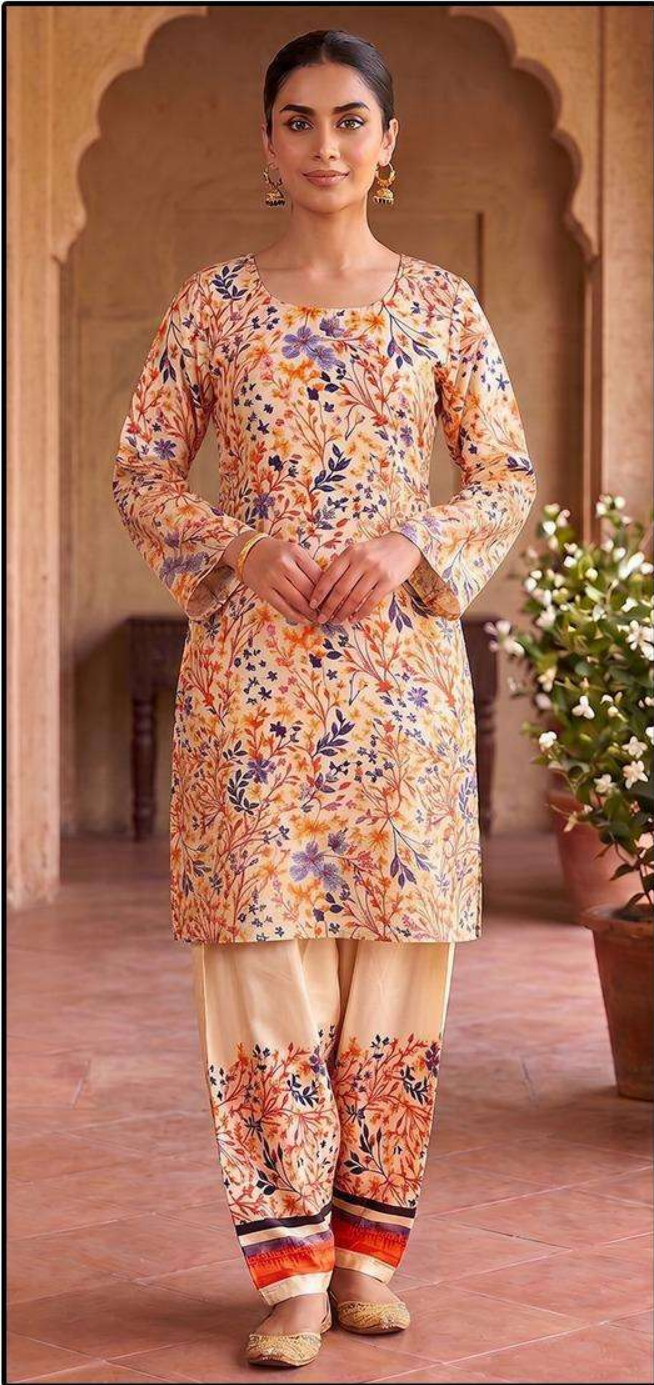
DRY CLEAN RECOMMENDED
DO NOT USE ANY TYPE OF BLEACH OR STAIN REMOVING CHEMICALS
DO NOT OVER EXPOSE DAMP FABRIC TO STRONG SUNLIGHT
IRON AT MODERATE TEMPERATURE



HOOR TEX



HF-876



HF-880

Top :- Heavy Malai Satin

Bottom :- Heavy Malai satin



HOOR TEX

CARE INSTRUCTIONS

DRY CLEAN RECOMMENDED
DO NOT USE ANY TYPE OF BLEACH OR STAIN REMOVING CHEMICALS
DO NOT OVER EXPOSE DAMP FABRIC TO STRONG SUNLIGHT
IRON AT MODERATE TEMPERATURE



HF-876

Top :- Heavy Malai Satin

Bottom :- Heavy Malai satin



HOOR TEX

CARE INSTRUCTIONS

DRY CLEAN RECOMMENDED
DO NOT USE ANY TYPE OF BLEACH OR STAIN REMOVING CHEMICALS
DO NOT OVER EXPOSE DAMP FABRIC TO STRONG SUNLIGHT
IRON AT MODERATE TEMPERATURE



HF-878

Top :- Heavy Malai Satin

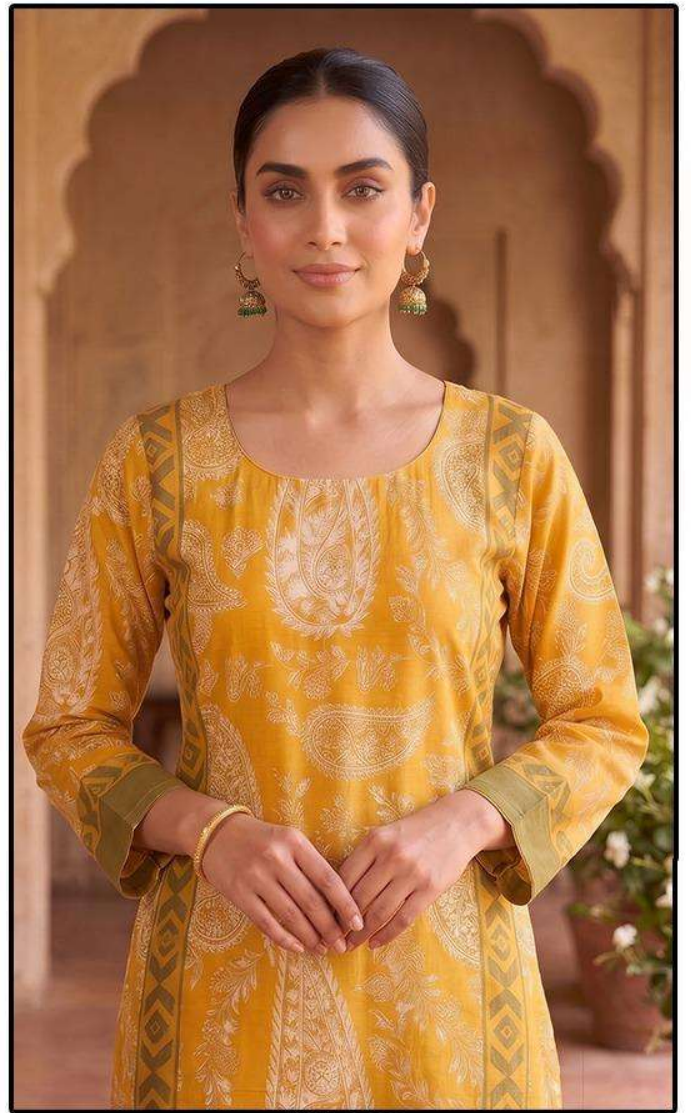
Bottom :- Heavy Malai satin

CARE INSTRUCTIONS

DRY CLEAN RECOMMENDED
DO NOT USE ANY TYPE OF BLEACH OR STAIN REMOVING CHEMICALS
DO NOT OVER EXPOSE DAMP FABRIC TO STRONG SUNLIGHT
IRON AT MODERATE TEMPERATURE



HOOR TEX



HF-875

Top :- Heavy Malai Satin

Bottom :- Heavy Malai satin

CARE INSTRUCTIONS

DRY CLEAN RECOMMENDED
DO NOT USE ANY TYPE OF BLEACH OR STAIN REMOVING CHEMICALS
DO NOT OVER EXPOSE DAMP FABRIC TO STRONG SUNLIGHT
IRON AT MODERATE TEMPERATURE



HOOR TEX



HF-878



HF-875



HF-867



HF-864



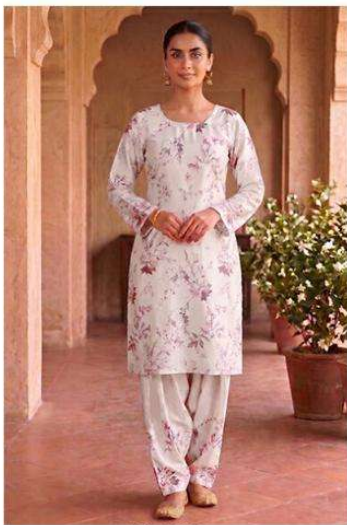
HF-867



HF-875



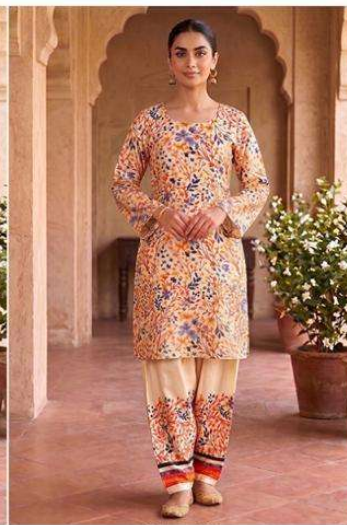
HF-876



HF-878



HF-879



HF-880



HOOR TEX



HOOR TEX