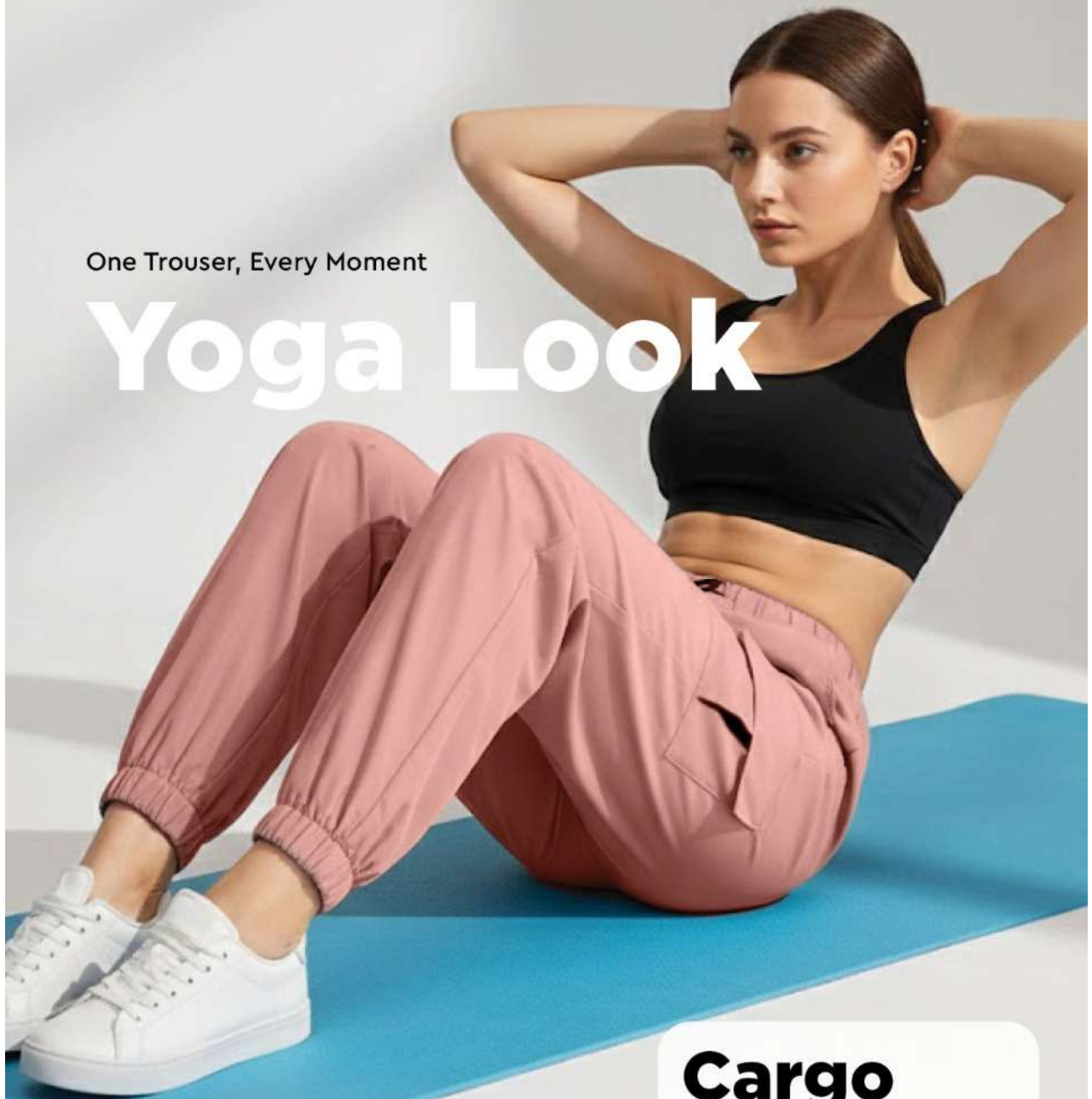




One Trouser, Every Moment

# Yoga Look



## Cargo Pant

FABRIC: 2-Way Stretchable

USP: Elasticated Waist  
with Metal Tip Drawstring

FEATURE: 4 Pockets

SIZE: 30-32 (L) • 34-36 (XL)  
38-40 (2XL)



One Trouser, Every Moment

# Party Look

## Cargo Pant

FABRIC: 2-Way Stretchable

USP: Elasticated Waist  
with Metal Tip Drawstring

FEATURE: 4 Pockets

SIZE: 30-32 (L) • 34-36 (XL)  
38-40 (2XL)



**DARK BLOSSOM PINK**

All Available



**DARK MINT GREEN**

L & XL  
Available only



**HONEY YELLOW**

All Available



**ICE BLUE**

L  
Available only



**KHAKI**

All Available



**LAVENDER**

All Available



**SHERRY BERRY**

XL & 2XL  
Available only



**OCEAN**

All Available



One Trouser, Every Moment

# Gym Look

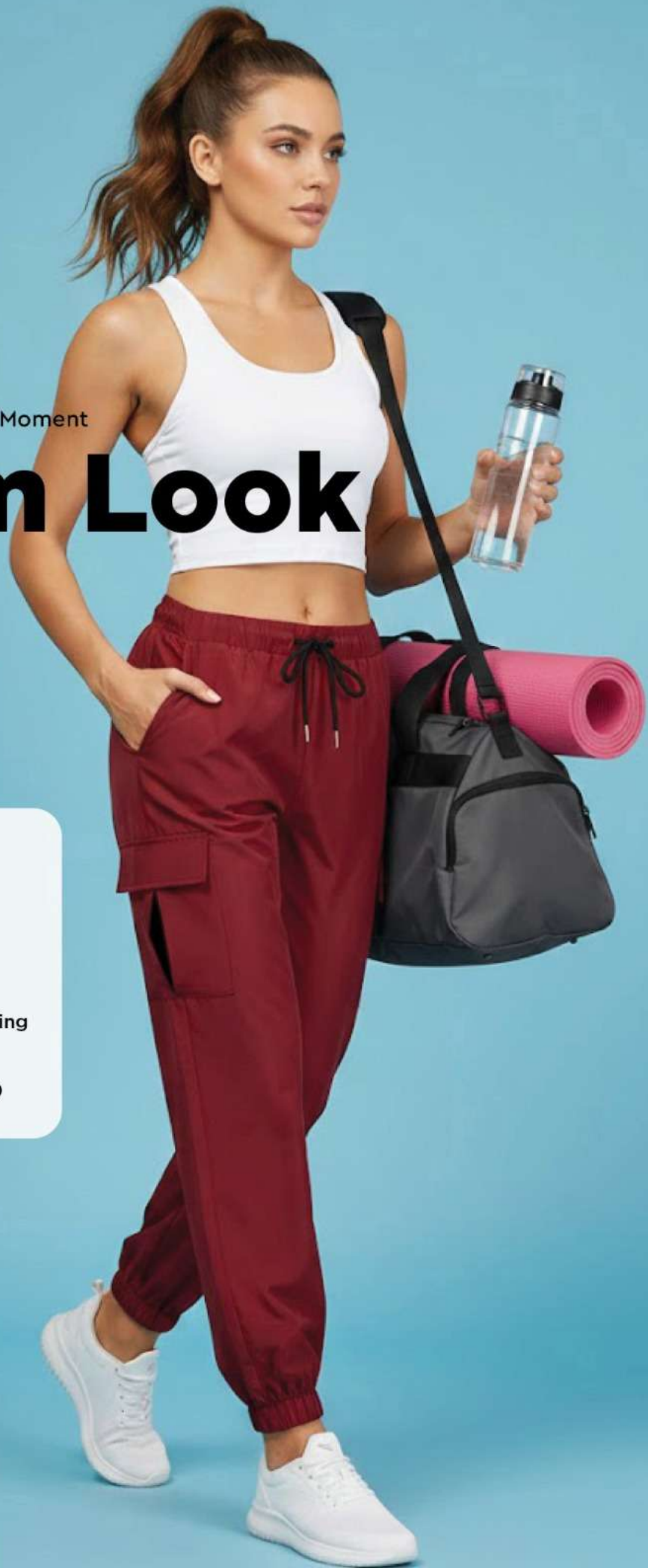
## Cargo Pant

FABRIC: 2-Way Stretchable

USP: Elasticated Waist  
with Metal Tip Drawstring

FEATURE: 4 Pockets

SIZE: 30-32 (L) • 34-36 (XL)  
38-40 (2XL)





#### VERSATILE USE FOR

- Yoga
- Gym
- Jogging
- Sports
- Zumba
- Office
- College
- Everyday use etc.



#### UNIQUE SELLING POINT

- Contrast Pockets
- Elasticated Waist with Metal Tip Drawstring
- Elasticated Ankle Pants



#### 2-WAY STRETCHABLE



#### FULL DAY COMFORT



#### 2 FRONT & 2 SIDE POCKETS



#### MULTIPLE COLOURS



A close-up photograph of a cargo pocket on a piece of salmon-colored fabric. The pocket is rectangular with a flap that is partially open, revealing a black interior lining. The fabric has a subtle texture and visible stitching around the pocket's edges and the flap. The text "CONTRAST CARGO POCKET" is centered in white, uppercase letters over the pocket area.

CONTRAST CARGO POCKET





# Move Ready. Style Steady.

Yoga • Gym • Jogging • Zumba • Office • Sports • College • Everyday use etc.



One Cargo. Every Move.

# Holiday Look

## Cargo Pant

FABRIC: 2-Way Stretchable

USP: Elasticated Waist  
with Metal Tip Drawstring

FEATURE: 4 Pockets

SIZE: 30-32 (L) • 34-36 (XL)  
38-40 (2XL)



# One Fit. All Plans.

Yoga • Gym • Jogging • Zumba • Office • Sports • College • Everyday use etc.



One Trouser, Every Moment

# Zumba Look

## Cargo Pant

FABRIC: 2-Way Stretchable

USP: Elasticated Waist  
with Metal Tip Drawstring

FEATURE: 4 Pockets

SIZE: 30-32 (L) • 34-36 (XL)  
38-40 (2XL)





One Trouser, Every Moment

# Yoga Look



## Cargo Pant

FABRIC: 2-Way Stretchable

USP: Elasticated Waist  
with Metal Tip Drawstring

FEATURE: 4 Pockets

SIZE: 30-32 (L) • 34-36 (XL)  
38-40 (2XL)



One Trouser, Every Moment

# College Look

## Cargo Pant

FABRIC: 2-Way Stretchable

USP: Elasticated Waist  
with Metal Tip Drawstring

FEATURE: 4 Pockets

SIZE: 30-32 (L) • 34-36 (XL)  
38-40 (2XL)



One Trouser, Every Moment

# Sports Look

## Cargo Pant

FABRIC: 2-Way Stretchable

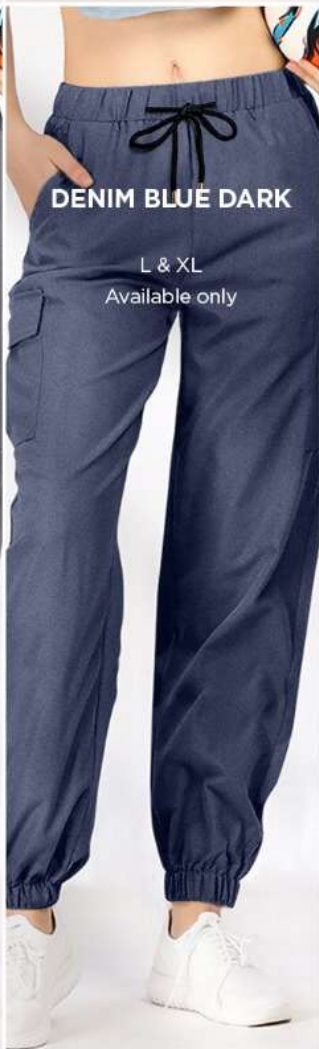
USP: Elasticated Waist  
with Metal Tip Drawstring

FEATURE: 4 Pockets

SIZE: 30-32 (L) • 34-36 (XL)  
38-40 (2XL)









## Pocket Style

Handy pocket for your phone, keys & essentials on the go.



## 2-Way Stretchable Cotton

Stay stylish and comfy in our women's stretchable cargos.



## Jogger Style

Stylish cargo pants with elastic ankles, perfect for any activity.



One Trouser, Every Moment

# Office Look

## Cargo Pant

FABRIC: 2-Way Stretchable

USP: Elasticated Waist  
with Metal Tip Drawstring

FEATURE: 4 Pockets

SIZE: 30-32 (L) • 34-36 (XL)  
38-40 (2XL)



# One Cargo. Every Move.

Yoga • Gym • Jogging • Zumba • Office • Sports • College • Everyday use etc.