

15918-B



15911C



15918-B



15911B



15909D





15913
SAREE STYLE: ONEMINUTE SAREE
WITH REGULAR BLOUSE
FABRIC: SOFT SATIN SILK
WORK: SEQUINS EMBROIDERY WITH STONE AND
APPLIQUE HANDWORK.
ACCESSORIES: REGULAR BLOUSE FABRIC WITH JACKET, BELT.
Additional Stitch Blouse Will Be Charges Extra



15914

SAREE STYLE: ONEMINUTE SAREE WITH REGULAR BLOUSE.

FABRIC: TWO TONE SOFT SATIN.

WORK: DUAL SEQUINS EMBROIDERY WITH STONE HANDWORK.

ACCESSORIES: REGULAR BLOUSE FABRIC WITH BELT.

Additional Stitch Blouse Will Be Charges Extra

15918D

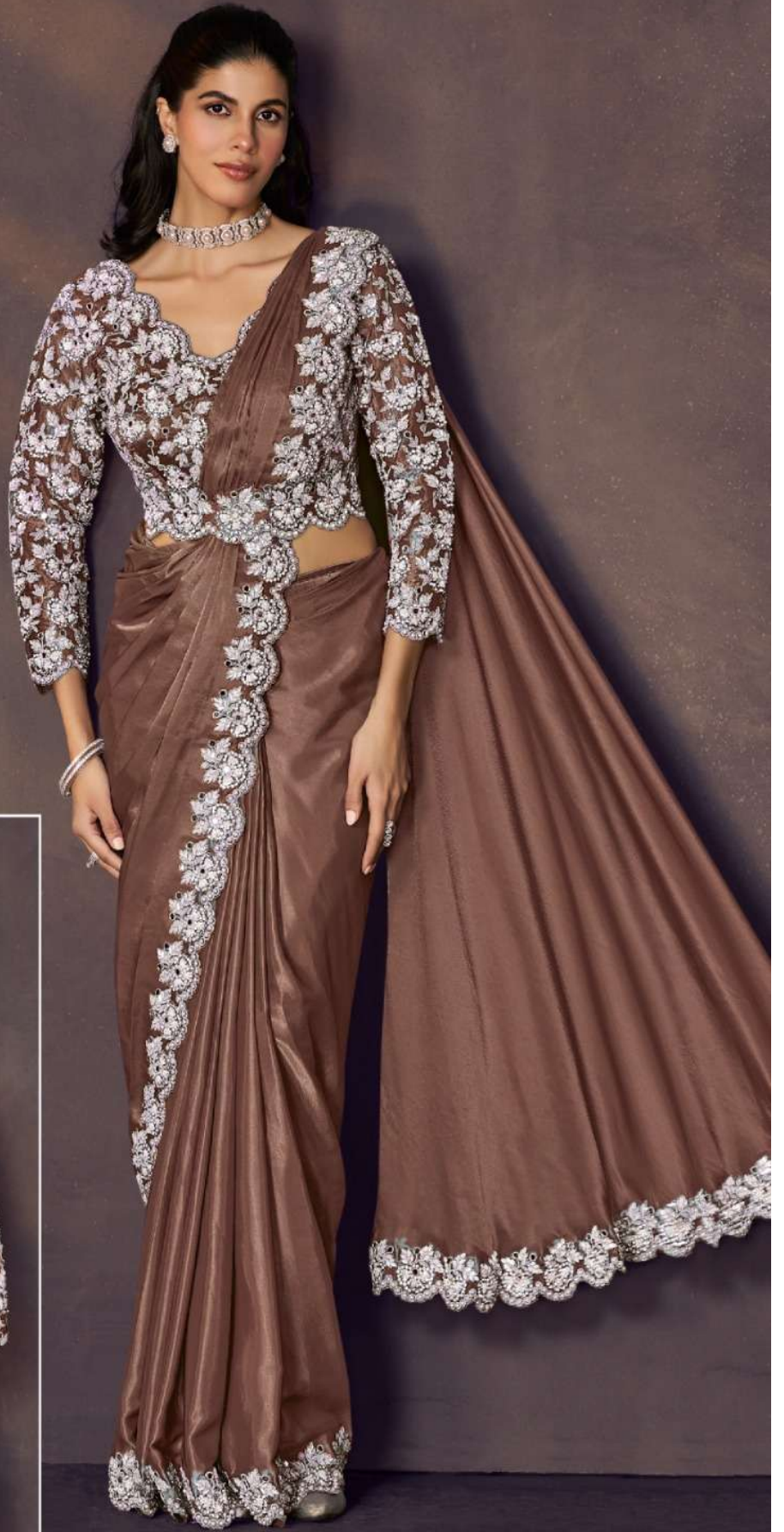




15911

SAREE STYLE: ONEMINUTE SAREE
WITH REGULAR BLOUSE.
FABRIC: SOFT SATIN SILK.
WORK: BEADS EMBELLISHED WITH STONE
AND APPLIQUE HANDWORK.
ACCESSORIES: REGULAR BLOUSE FABRIC WITH BELT.
Additional Stitch Blouse Will Be Charges Extra

15918 C





15917

SAREE STYLE: ONEMINUTE SAREE
WITH REGULAR BLOUSE.
FABRIC: TWO TONE SOFT SILK.
WORK: BEADS EMBROIDERY WITH
STONE AND PEARL HANDWORK.
ACCESSORIES: REGULAR BLOUSE FABRIC WITH BELT.

Additional Stitch Blouse Will Be Charges Extra



15910

SAREE STYLE: ONEMINUTE SAREE WITH REGULAR BLOUSE.

FABRIC: TWO TONE SATIN SILK.
WORK: SEQUINS EMBROIDERY WITH STONE AND PEARL HANDWORK.

ACCESSORIES: REGULAR BLOUSE FABRIC WITH JACKET, BELT.

Additional Stitch Blouse Will Be Charges Extra



15912
SAREE STYLE: ONEMINUTE SAREE WITH
REGULAR BLOUSE.
FABRIC: SOFT SATIN SILK.
WORK: MIRROR AND STONE HANDWORK
WITH SCALLOP EMBROIDERY.
ACCESSORIES: REGULAR BLOUSE FABRIC WITH JACKET, BELT.
Additional Stitch Blouse Will Be Charges Extra

15909B







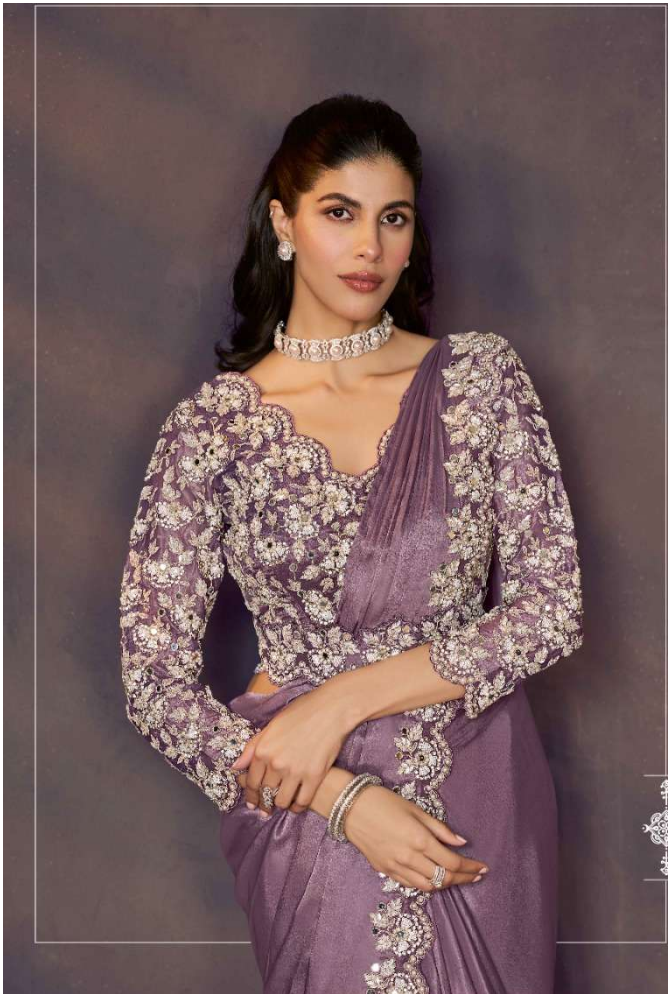




15915
SAREE STYLE: ONEMINUTE SAREE
WITH REGULAR BLOUSE.
FABRIC: SOFT SATIN SILK.
WORK: DUAL SEQUINS EMBROIDERY
WITH STONE HANDWORK
ACCESSORIES: REGULAR BLOUSE FABRIC WITH JACKET, BELT.
Additional Stitch Blouse Will Be Charges Extra



15920
SAREE STYLE: ONEMINUTE SAREE
WITH REGULAR BLOUSE.
FABRIC: TWO TONE SOFT SATIN SILK.
WORK: SEQUINS EMBROIDERY WITH
STONE AND APPLIQUE HANDWORK.
ACCESSORIES: REGULAR BLOUSE FABRIC WITH BELT.
Additional Stitch Blouse Will Be Charges Extra



15918

SAREE STYLE: ONEMINUTE SAREE
WITH REGULAR BLOUSE.

FABRIC: SOFT SATIN SILK.

WORK: SEQUINS SCALLOP EMBROIDERY WITH

STONE HANDWORK.

ACCESSORIES: REGULAR BLOUSE FABRIC WITH BELT.

Additional Stitch Blouse Will Be Charges Extra



DESIGN NO	SAREE FABRIC	BLOUSE FABRIC	WORK	Accessories	Belt	SAREE TYPE	CUSTZ.(SEMISTITCH/UN-STITCH)	BLOUSE SIZE
15907	Two Tone Satin Silk	Two Tone Satin Silk	Sequins Embroidery, Pearl, Stone Embellishment	Blouse, Cape, Belt	Available	Ready to wear	Stitched Blouse	up to 38 Inch with margin of 42 inch
15908	Two Tone Satin Silk	Satin Silk	Dual Sequins Embroidery, Mirror, Pearl Handwork	Blouse, Belt	Available	Ready to wear	Stitched Blouse	up to 38 Inch with margin of 42 inch
15909	Crush Satin Silk	Tissue Silk	Sequins, Dual Beads Embellishment	Blouse, Belt	Available	Ready to wear	Stitched Blouse	up to 38 Inch with margin of 42 inch
15910	Two Tone Satin Silk	Two Tone Satin Silk	Sequins Embroidery, Stone, Pearl Embellishment	Blouse, Jacket, Belt	Available	Ready to wear	Stitched Blouse	up to 38 Inch with margin of 42 inch
15911	Two Tone Satin Silk	Tissue Silk	Beads Embellished, Stone, Applique Work	Blouse, Belt	Available	Ready to wear	Stitched Blouse	up to 38 Inch with margin of 42 inch
15912	Soft Satin Silk	Two Tone Satin Silk	Mirror, Stone, Handwork, Scallop Embroidery	Blouse, Jacket, Belt	Available	Ready to wear	Stitched Blouse	up to 38 Inch with margin of 42 inch
15913	Soft Satin Silk	Soft Satin Silk	Sequins Embroidery, Stone, Applique Handwork	Blouse, Jacket, Belt	Available	Ready to wear	Stitched Blouse	up to 38 Inch with margin of 42 inch
15914	Two Tone Soft Silk	Satin Silk	Dual Sequins Embroidery, Pearl, Stone Handwork	Blouse, Belt	Available	Ready to wear	Stitched Blouse	up to 38 Inch with margin of 42 inch
15915	Soft Satin Silk	Soft Satin Silk	Dual Sequins Embroidery, Pearl, Stone Handwork	Blouse, Jacket, Belt	Available	Ready to wear	Stitched Blouse	up to 38 Inch with margin of 42 inch
15916	Soft Satin Silk	Satin Silk	Dual Sequins Embroidery, Pearl, Stone, Handwork	Blouse, Belt	Available	Ready to wear	Stitched Blouse	up to 38 Inch with margin of 42 inch
15917	Two Tone Soft Silk	Satin Silk	Dual Beads Embellished, Stone, Handwork	Blouse, Belt	Available	Ready to wear	Stitched Blouse	up to 38 Inch with margin of 42 inch
15918	Soft Satin Silk	Tissue Silk	Scallop Sequins Embroidery, Multi Stone Embellishment	Blouse, Belt	Available	Ready to wear	Stitched Blouse	up to 38 Inch with margin of 42 inch
15919	Two Tone Satin Silk	Satin Silk	Dual Sequins, Embroidery, Stone Handwork	Blouse, Poncho, Belt	Available	Ready to wear	Stitched Blouse	up to 38 Inch with margin of 42 inch
15920	Two Tone Soft Silk	Raw Silk	Sequins Embroidery, Stone, Applique Handwork	Blouse, Belt	Available	Ready to wear	Stitched Blouse	up to 38 Inch with margin of 42 inch
15921	Two Tone Satin Silk	Two Tone Satin Silk	Sequins, Hand work	Blouse, Belt	Available	Ready to wear	Stitched Blouse	up to 38 Inch with margin of 42 inch
15922	Two tone satin silk	Tissue	Pure Handwork, Khatli Work	Blouse, Belt	Available	Ready to wear	Stitched Blouse	up to 38 Inch with margin of 42 inch
15923	Shimmer Chiffon	Malai Satin	Pure Handwork, Khatli Work	Blouse, Belt	Available	Ready to wear	Stitched Blouse	up to 38 Inch with margin of 42 inch

15909C



15907 B







15907
SAREE STYLE: ONEMINUTE SAREE WITH
REGULAR BLOUSE
FABRIC: SOFT SATIN SILK
WORK: SEQUINS, STONE AND
PEARL HANDWORK HIGHLIGHTED WITH APPLIQUE FLOWERS
ACCESSORIES: REGULAR BLOUSE FABRIC WITH BELT
Additional Stitch Blouse Will Be Charges Extra



15907C



