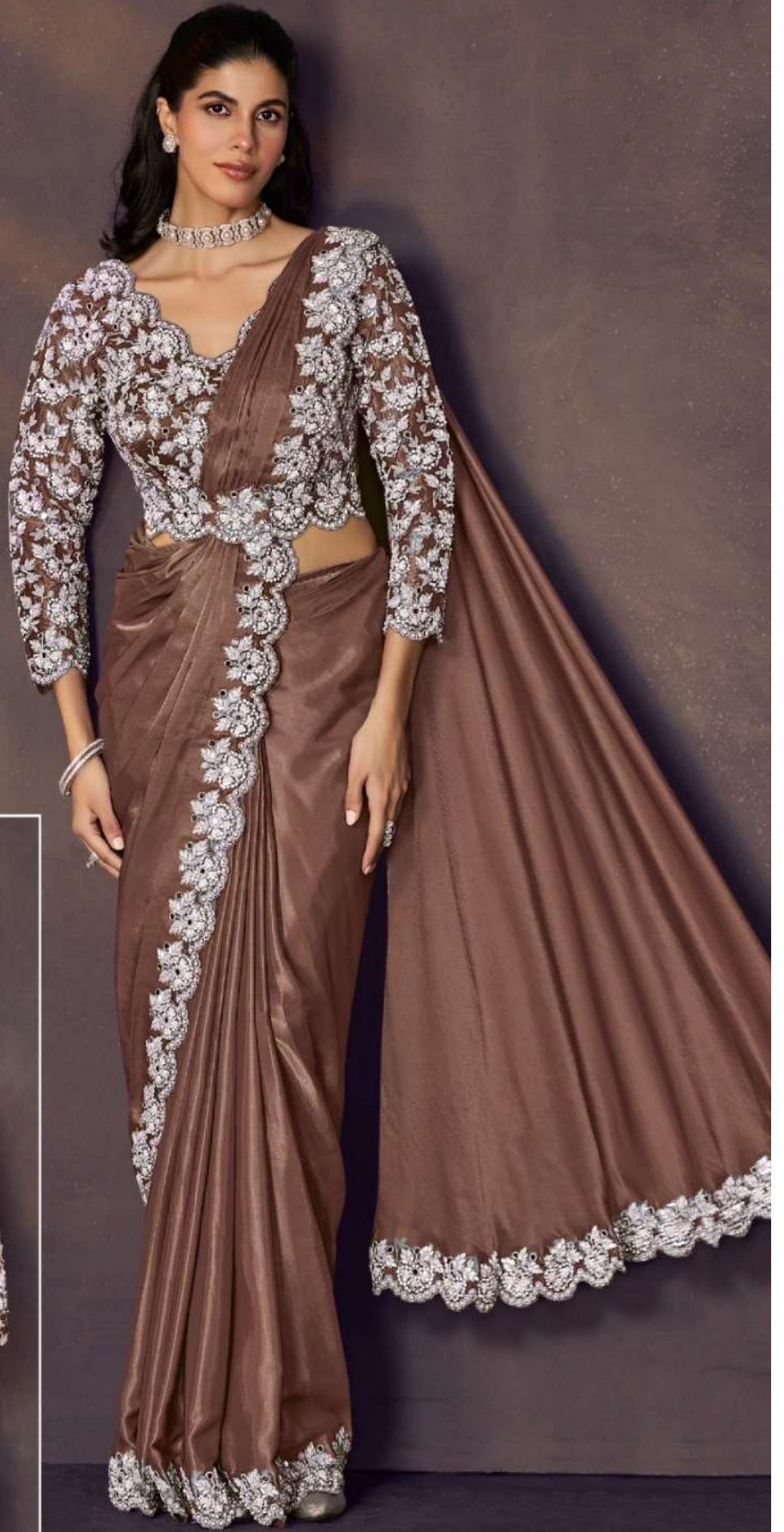


15918 C



15918 C



DESIGN NO	SAREE FABRIC	BLOUSE FABRIC	WORK	Accessories	Belt	SAREE TYPE	CUSTZ.(SEMISTITCH/UN-STITCH)	BLOUSE SIZE
15909-B	Crush Satin Silk	Tissue Silk	Sequins, Dual Beads Embellishment	Blouse, Belt	Available	Ready to wear	Stitched Blouse	up to 38 Inch with margin of 42 inch
15909-C	Crush Satin Silk	Tissue Silk	Sequins, Dual Beads Embellishment	Blouse, Belt	Available	Ready to wear	Stitched Blouse	up to 38 Inch with margin of 42 inch
15909-D	Crush Satin Silk	Tissue Silk	Sequins, Dual Beads Embellishment	Blouse, Belt	Available	Ready to wear	Stitched Blouse	up to 38 Inch with margin of 42 inch
15911	Two Tone Satin Silk	Tissue Silk	Beads Embellished, Stone, Applique Work	Blouse, Belt	Available	Ready to wear	Stitched Blouse	up to 38 Inch with margin of 42 inch
15912	Soft Satin Silk	Two Tone Satin Silk	Mirror, Stone, Handwork, Scallop Embroidery	Blouse, Jacket, Belt	Available	Ready to wear	Stitched Blouse	up to 38 Inch with margin of 42 inch
15913	Soft Satin Silk	Soft Satin Silk	Sequins Embroidery, Stone, Applique Handwork	Blouse, Jacket, Belt	Available	Ready to wear	Stitched Blouse	up to 38 Inch with margin of 42 inch
15914	Two Tone Soft Silk	Satin Silk	Dual Sequins Embroidery, Pearl, Stone Handwork	Blouse, Belt	Available	Ready to wear	Stitched Blouse	up to 38 Inch with margin of 42 inch
15915	Soft Satin Silk	Soft Satin Silk	Dual Sequins Embroidery, Pearl, Stone Handwork	Blouse, Jacket, Belt	Available	Ready to wear	Stitched Blouse	up to 38 Inch with margin of 42 inch
15917	Two Tone Soft Silk	Satin Silk	Dual Beads Embellished, Stone, Handwork	Blouse, Belt	Available	Ready to wear	Stitched Blouse	up to 38 Inch with margin of 42 inch
15918	Soft Satin Silk	Tissue Silk	Scallop Sequins Embroidery, Multi Stone Embellishment	Blouse, Belt	Available	Ready to wear	Stitched Blouse	up to 38 Inch with margin of 42 inch
15918-B	Soft Satin Silk	Tissue Silk	Scallop Sequins Embroidery, Multi Stone Embellishment	Blouse, Belt	Available	Ready to wear	Stitched Blouse	up to 38 Inch with margin of 42 inch
15918-D	Soft Satin Silk	Tissue Silk	Scallop Sequins Embroidery, Multi Stone Embellishment	Blouse, Belt	Available	Ready to wear	Stitched Blouse	up to 38 Inch with margin of 42 inch

15909C



15907C



15909D



15911B





15914

SAREE STYLE: ONEMINUTE SAREE WITH REGULAR BLOUSE.

FABRIC: TWO TONE SOFT SATIN.

WORK: DUAL SEQUINS EMBROIDERY WITH STONE HANDWORK.

ACCESSORIES: REGULAR BLOUSE FABRIC WITH BELT.

Additional Stitch Blouse Will Be Charges Extra



15911

SAREE STYLE: ONEMINUTE SAREE
WITH REGULAR BLOUSE.
FABRIC: SOFT SATIN SILK.
WORK: BEADS EMBELLISHED WITH STONE
AND APPLIQUE HANDWORK.
ACCESSORIES: REGULAR BLOUSE FABRIC WITH BELT.
Additional Stitch Blouse Will Be Charges Extra

15918-B



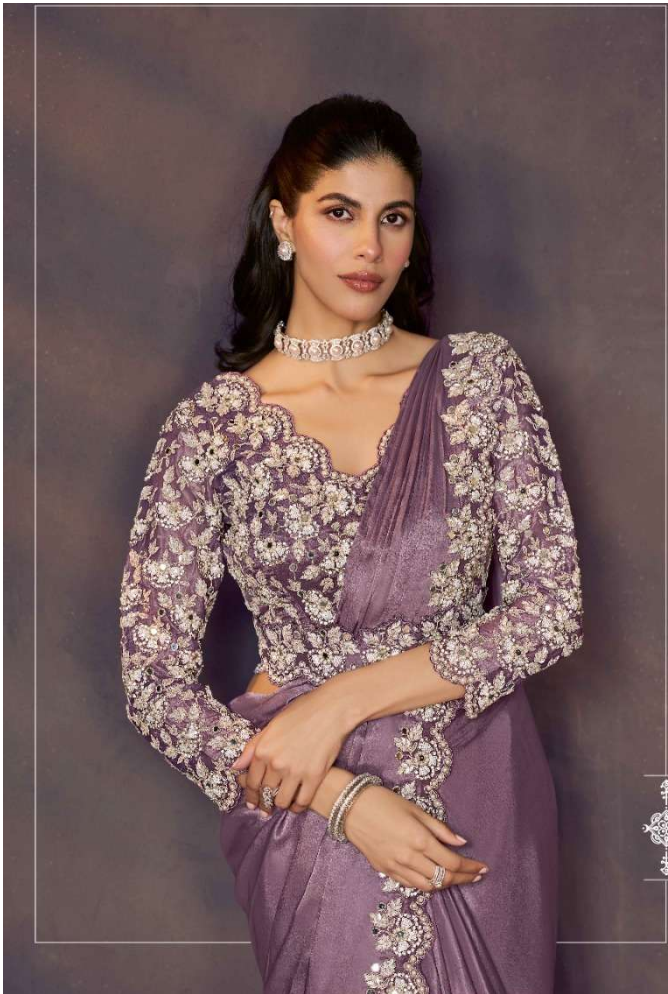


15917

SAREE STYLE: ONEMINUTE SAREE
WITH REGULAR BLOUSE.
FABRIC: TWO TONE SOFT SILK.
WORK: BEADS EMBROIDERY WITH
STONE AND PEARL HANDWORK.
ACCESSORIES: REGULAR BLOUSE FABRIC WITH BELT.

Additional Stitch Blouse Will Be Charges Extra





15918

SAREE STYLE: ONEMINUTE SAREE WITH REGULAR BLOUSE.

FABRIC: SOFT SATIN SILK.

WORK: SEQUINS SCALLOP EMBROIDERY WITH STONE HANDWORK.

ACCESSORIES: REGULAR BLOUSE FABRIC WITH BELT.

Additional Stitch Blouse Will Be Charges Extra



15913
SAREE STYLE: ONEMINUTE SAREE
WITH REGULAR BLOUSE
FABRIC: SOFT SATIN SILK
WORK: SEQUINS EMBROIDERY WITH STONE AND
APPLIQUE HANDWORK.
ACCESSORIES: REGULAR BLOUSE FABRIC WITH JACKET, BELT.
Additional Stitch Blouse Will Be Charges Extra



15909B






15909
SAREE STYLE: ONEMINUTE SAREE WITH
REGULAR BLOUSE.
FABRIC: CRUSH SOFT SATIN SILK.
WORK: BEADS AND SEQUINS EMBELLISHMENT
ACCESSORIES: REGULAR BLOUSE FABRIC WITH BELT
Additional Stitch Blouse Will Be Charges Extra

15918D



15907 B







15915
SAREE STYLE: ONEMINUTE SAREE
WITH REGULAR BLOUSE.
FABRIC: SOFT SATIN SILK.
WORK: DUAL SEQUINS EMBROIDERY
WITH STONE HANDWORK
ACCESSORIES: REGULAR BLOUSE FABRIC WITH JACKET, BELT.
Additional Stitch Blouse Will Be Charges Extra