



HF-831 B

Top :- Heavy Malai Satin

Bottom :- Heavy Malai Satin

Dupatta :- Heavy Organza



HOOR TEX

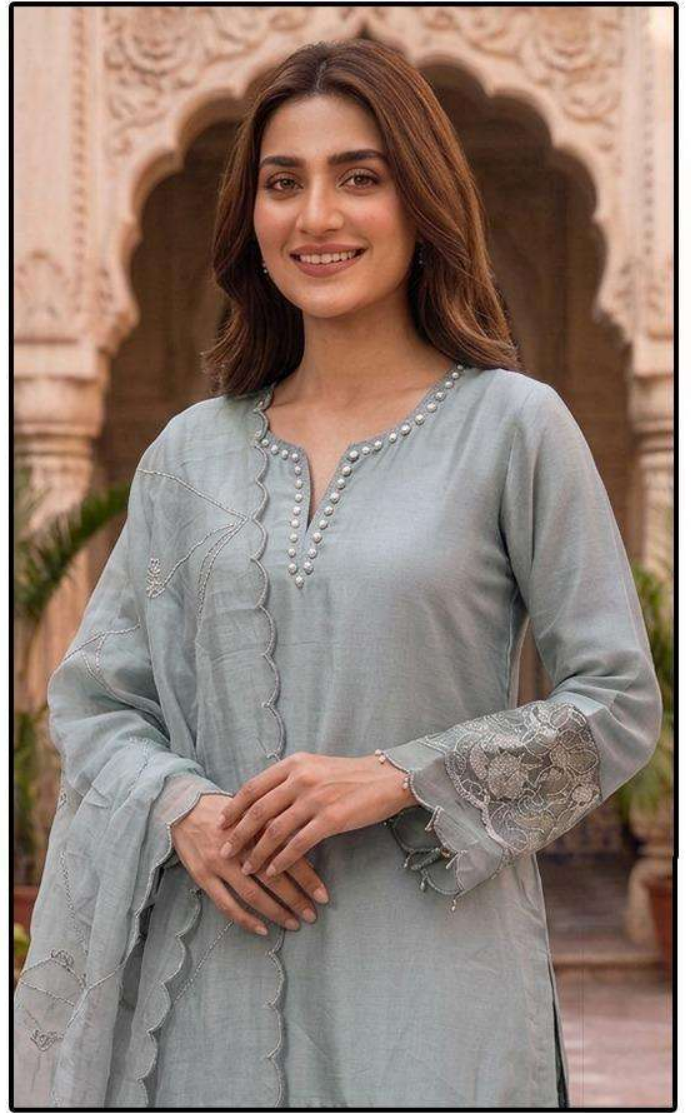
CARE INSTRUCTIONS

DRY CLEAN RECOMMENDED

DO NOT USE ANY TYPE OF BLEACH OR STAIN REMOVING CHEMICALS

DO NOT OVER EXPOSE DAMP FABRIC TO STRONG SUNLIGHT

IRON AT MODERATE TEMPERATURE



HF-831 A

Top :- Heavy Malai Satin

Bottom :- Heavy Malai Satin

Dupatta :- Heavy Organza



HOOR TEX

CARE INSTRUCTIONS

DRY CLEAN RECOMMENDED

DO NOT USE ANY TYPE OF BLEACH OR STAIN REMOVING CHEMICALS

DO NOT OVER EXPOSE DAMP FABRIC TO STRONG SUNLIGHT

IRON AT MODERATE TEMPERATURE



HF-831



HF-831 B

Top :- Heavy Malai Satin

Bottom :- Heavy Malai Satin

Dupatta :- Heavy Organza



HOOR TEX

CARE INSTRUCTIONS

DRY CLEAN RECOMMENDED

DO NOT USE ANY TYPE OF BLEACH OR STAIN REMOVING CHEMICALS

DO NOT OVER EXPOSE DAMP FABRIC TO STRONG SUNLIGHT

IRON AT MODERATE TEMPERATURE



HF-831 A

HF-831 B

HF-831 C

HF-831 D



HOOR TEX



HF-831



HF-831



HF-831 C

Top :- Heavy Malai Satin

Bottom :- Heavy Malai Satin

Dupatta :- Heavy Organza



HOOR TEX

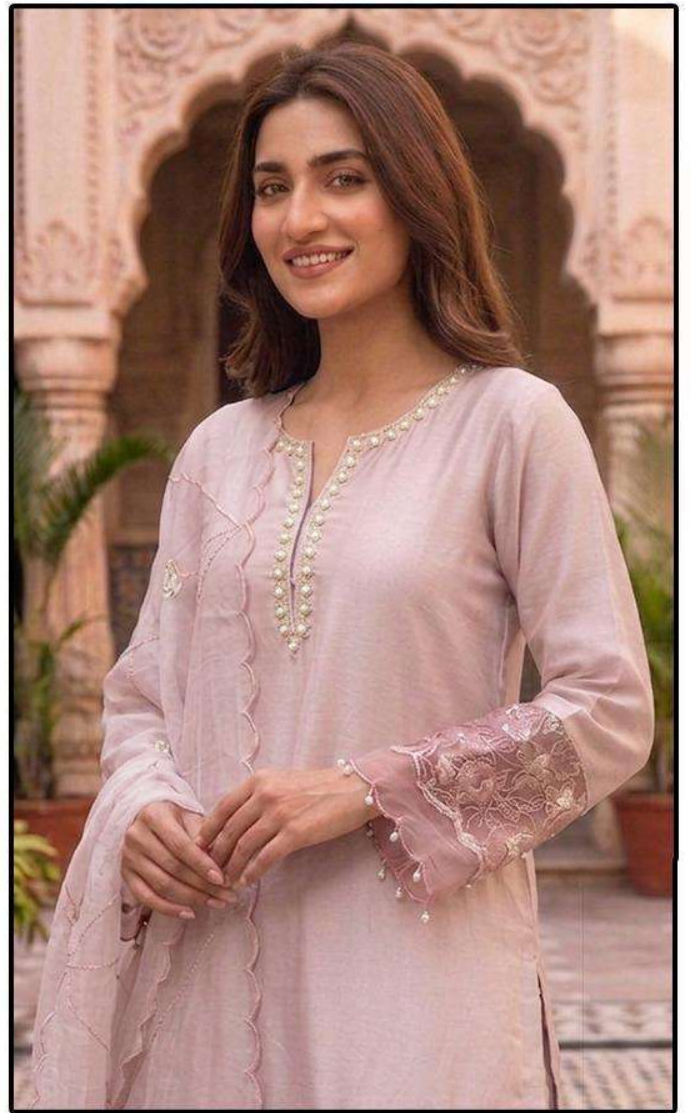
CARE INSTRUCTIONS

DRY CLEAN RECOMMENDED

DO NOT USE ANY TYPE OF BLEACH OR STAIN REMOVING CHEMICALS

DO NOT OVER EXPOSE DAMP FABRIC TO STRONG SUNLIGHT

IRON AT MODERATE TEMPERATURE



HF-831 D

Top :- Heavy Malai Satin

Bottom :- Heavy Malai Satin

Dupatta :- Heavy Organza



HOOR TEX

CARE INSTRUCTIONS

DRY CLEAN RECOMMENDED

DO NOT USE ANY TYPE OF BLEACH OR STAIN REMOVING CHEMICALS

DO NOT OVER EXPOSE DAMP FABRIC TO STRONG SUNLIGHT

IRON AT MODERATE TEMPERATURE



HF-831