











Ready To Wear Saree Features



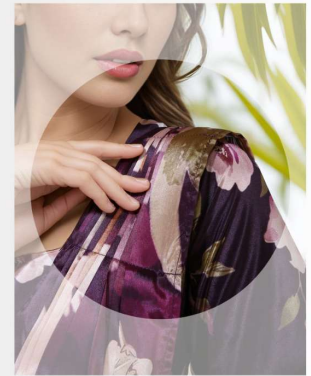
Well stitched pleats for
a FAB look

Ready to wear Stitched Blouse



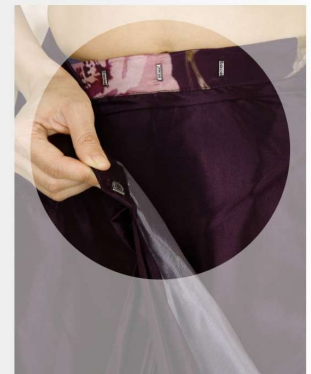
Pocket Friendly for
Always To-Carry items

Precisely stitched pallu
to carry swiftly and adding a
broach makes it look
elegant.



Butterfly pallu for
a flamboyant look
without hassels.

All-in-one size hooks
that fits the waist perfectly
(32"/34"/36"/38"/40"/42")



***HISO2 (RTW)
SAREE PLUS BLOUSE***



Ready To Wear Saree Features



Well stitched pleats for
a FAB look

Ready to wear Stitched Blouse



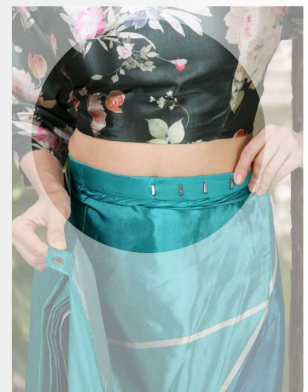
Pocket Friendly for
Always To-Carry items

Precisely stitched pallu
to carry swiftly and adding a
broach makes it look
elegant.



Butterfly pallu for
a flamboyant look
without hassels.

All-in-one size hooks
that fits the waist perfectly
(32"/34"/36"/38"/40"/42")



**HISO4 (RTW)
SAREE PLUS BLOUSE**



HISO4 (RTW)
SAREE PLUS BLOUSE

Pocket Friendly for Always To-Carry items



HISO4 (RTW)
SAREE PLUS BLOUSE

All-in-one size hooks that fits the waist perfectly (32"/34"/36"/38"/40"/42")



HISO4 (RTW)
SAREE PLUS BLOUSE









**How to wear a
Multipurpose
Ready 2 Wear
Saree in just
2 minutes.**

- Pocket Friendly
- Tuck in grip
- Stitched Pleates
- Butterfly Pallu
- Stitched Blouse



*HISO4 (RTW)
SAREE PLUS BLOUSE*

**How to wear a
Multipurpose
Ready 2 Wear
Saree in just
2 minutes.**

- Pocket Friendly
- Tuck in grip
- Stitched Pleates
- Butterfly Pallu
- Stitched Blouse



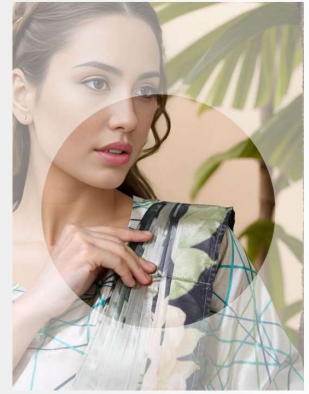
*HISO2 (RTW)
SAREE PLUS BLOUSE*

Ready To Wear Saree Features



Well stitched pleats for
a FAB look

Ready to wear Stitched Blouse



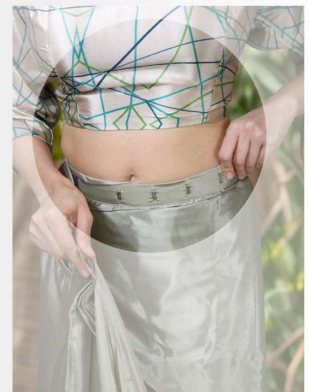
Pocket Friendly for
Always To-Carry items

Precisely stitched pallu
to carry swiftly and adding a
broach makes it look
elegant.



Butterfly pallu for
a flamboyant look
without hassels.

All-in-one size hooks
that fits the waist perfectly
(32"/34"/36"/38"/40"/42")



***HIS05 (RTW)
SAREE PLUS BLOUSE***



*HIS05 (RTW)
SAREE PLUS BLOUSE*

All-in-one size hooks that fits the waist perfectly (32"/34"/36"/38"/40"/42")



Pocket Friendly for Always To-Carry items

*HIS05 (RTW)
SAREE PLUS BLOUSE*



*HIS05 (RTW)
SAREE PLUS BLOUSE*





**How to wear a
Multipurpose
Ready 2 Wear
Saree in just
2 minutes.**

- Pocket Friendly
- Tuck in grip
- Stitched Pleates
- Butterfly Pallu
- Stitched Blouse



*HIS05 (RTW)
SAREE PLUS BLOUSE*



**How to wear a
Multipurpose
Ready 2 Wear
Saree in just
2 minutes.**

- Pocket Friendly
- Tuck in grip
- Stitched Pleates
- Butterfly Pallu
- Stitched Blouse



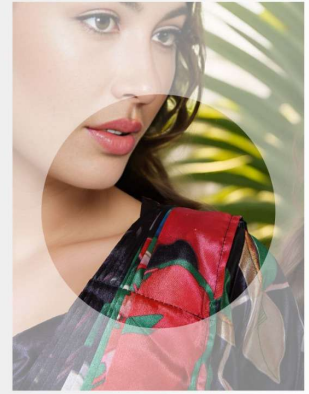


Ready To Wear Saree Features



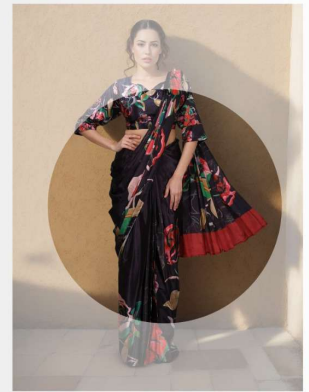
Well stitched pleats for
a FAB look

Ready to wear Stitched Blouse



Pocket Friendly for
Always To-Carry items

Precisely stitched pallu
to carry swiftly and adding a
broach makes it look
elegant.



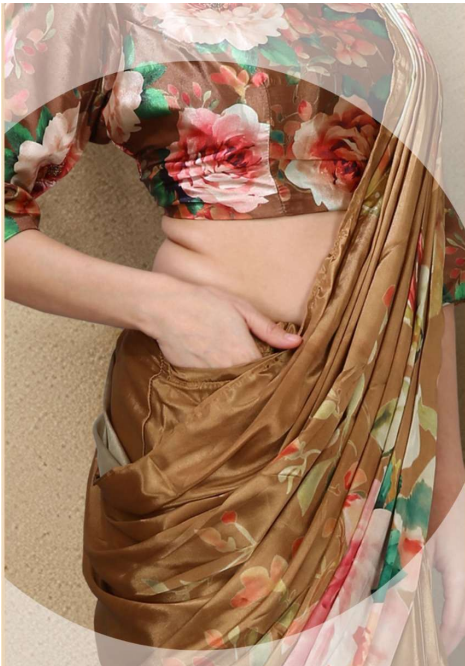
Butterfly pallu for
a flamboyant look
without hassels.

All-in-one size hooks
that fits the waist perfectly
(32"/34"/36"/38"/40"/42")



***HIS03 (RTW)
SAREE PLUS BLOUSE***





*HISO1 (RTW)
SAREE PLUS BLOUSE*



HISO2 (RTW)
SAREE PLUS BLO



HISO2 (RTW)
SAREE PLUS BLOUSE

**How to wear a
Multipurpose
Ready 2 Wear
Saree in just
2 minutes.**

- Pocket Friendly
- Tuck in grip
- Stitched Pleates
- Butterfly Pallu
- Stitched Blouse

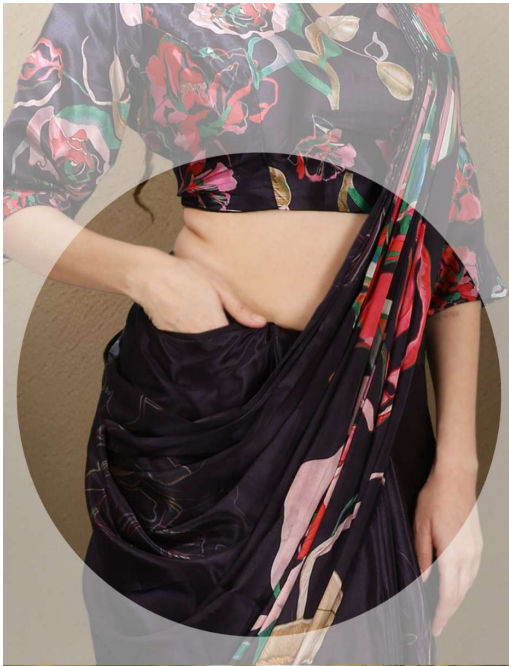


*HIS01 (RTW)
SAREE PLUS BLOUSE*









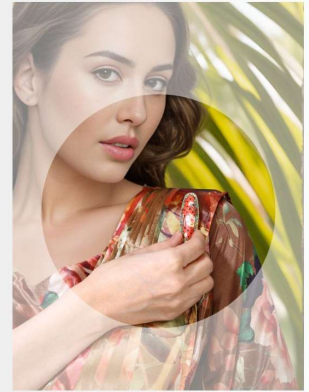
*HIS03 (RTW)
SAREE PLUS BLOUSE*

Ready To Wear Saree Features



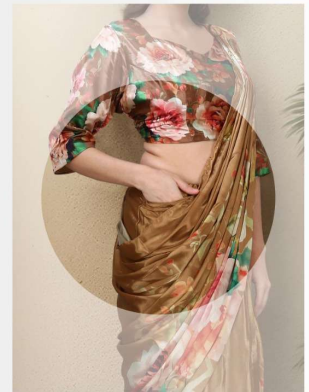
Well stitched pleats for
a FAB look

Ready to wear Stitched Blouse



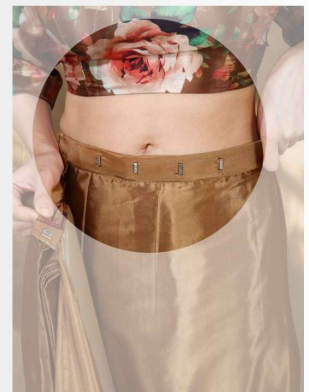
Pocket Friendly for
Always To-Carry items

Precisely stitched pallu
to carry swiftly and adding a
broach makes it look
elegant.



Butterfly pallu for
a flamboyant look
without hassels.

All-in-one size hooks
that fits the waist perfectly
(32"/34"/36"/38"/40"/42")



***HISO1 (RTW)
SAREE PLUS BLOUSE***





