





HF-826 C

Top :- Heavy Reyon

Bottom :- Heavy Reyon

Dupatta :- Heavy Organza

CARE INSTRUCTIONS

DRY CLEAN RECOMMENDED

DO NOT USE ANY TYPE OF BLEACH OR STAIN REMOVING CHEMICALS

DO NOT OVER EXPOSE DAMP FABRIC TO STRONG SUNLIGHT

IRON AT MODERATE TEMPERATURE



HOOR TEX



HF-826 B

Top :- Heavy Reyon

Bottom :- Heavy Reyon

Dupatta :- Heavy Organza

CARE INSTRUCTIONS

DRY CLEAN RECOMMENDED

DO NOT USE ANY TYPE OF BLEACH OR STAIN REMOVING CHEMICALS

DO NOT OVER EXPOSE DAMP FABRIC TO STRONG SUNLIGHT

IRON AT MODERATE TEMPERATURE



HOOR TEX



HF-826



HF-826 A

Top :- Heavy Reyon

Bottom :- Heavy Reyon

Dupatta :- Heavy Organza



HOOR TEX

CARE INSTRUCTIONS

DRY CLEAN RECOMMENDED

DO NOT USE ANY TYPE OF BLEACH OR STAIN REMOVING CHEMICALS

DO NOT OVER EXPOSE DAMP FABRIC TO STRONG SUNLIGHT

IRON AT MODERATE TEMPERATURE



HF-826



HF-826 D

Top :- Heavy Reyon

Bottom :- Heavy Reyon

Dupatta :- Heavy Organza



HOOR TEX

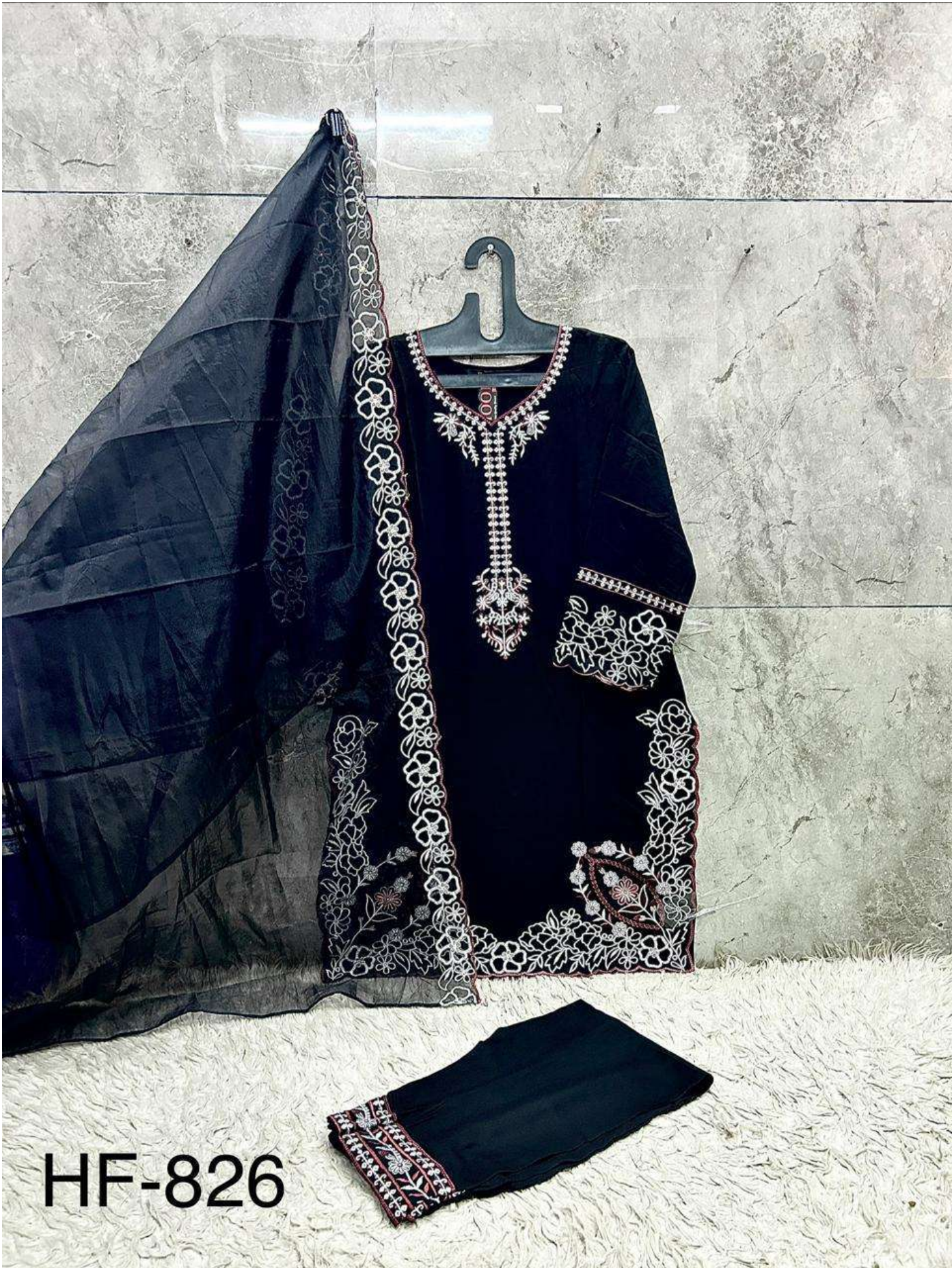
CARE INSTRUCTIONS

DRY CLEAN RECOMMENDED

DO NOT USE ANY TYPE OF BLEACH OR STAIN REMOVING CHEMICALS

DO NOT OVER EXPOSE DAMP FABRIC TO STRONG SUNLIGHT

IRON AT MODERATE TEMPERATURE



HF-826



HF-826 A



HF-826 B



HF-826 C



HF-826 D



HOOR TEX



HF-826