



**26908**

**SAREE STYLE :** READY TO WEAR

**FABRIC :** SATIN SILK

**WORK STYLE :** SEQUIN, BEAD &  
CUTDANA ZARDOSI WORK

**ACCESSORIES :** CORSET BLOUSE, CAPE



**26908**

**SAREE STYLE :** READY TO WEAR

**FABRIC :** SATIN SILK

**WORK STYLE :** SEQUIN, BEAD &  
CUTDANA ZARDOSI WORK

**ACCESSORIES :** CORSET BLOUSE, CAPE



26913  
SAREE STYLE : READY TO WEAR  
FABRIC : NATURAL CREPE SATIN  
WORK STYLE : SEQUIN EMBROIDERY  
EMBELLISHED WITH STONES, PEARLS  
& MIRROR WORK.  
ACCESSORIES : BLOUSE, BELT





| DESIGN NO | SAREE FABRIC            | BLOUSE FABRIC               | WORK  | Accessories           | Belt      | SAREE TYPE    | CUSTZ.(SEMISTITCH/UN-STITCH) | BLOUSE SIZE                      |
|-----------|-------------------------|-----------------------------|---|-----------------------|-----------|---------------|------------------------------|----------------------------------|
| 26906     | Lustrous Satin Silk     | Tissue Silk                 | Floral Sequin Embroidery highlighted, Pearl, Stones         | Blouse, Belt          | Available | Ready to wear | Stitched Blouse              | up to 38 Inch, margin of 42 inch |
| 26907     | Lustrous Satin Silk     | Tissue Satin Silk           | ulti Thread, Sequin, Embroidered, Stone, Pearl, Applique Wo | Blouse, Belt, Jacket  | Available | Ready to wear | Stitched Blouse              | up to 38 Inch, margin of 42 inch |
| 26908     | Satin Silk              | Tissue Satin Silk           | Sequin, Bead, Cutdana Zardosi Work                          | Corset Blouse, Cape   | Available | Ready to wear | Stitched Blouse              | up to 38 Inch, margin of 42 inch |
| 26909     | Georgette Chiffon Satin | Milky Satin                 | Dual Sequin Embroidery, Enhanced, Pearl, Stone Detailing    | Blouse, Belt          | Available | Ready to wear | Stitched Blouse              | up to 38 Inch, margin of 42 inch |
| 26910     | Lustrous Satin Silk     | Brocade Silk                | Floral Sequin, Embroidery, Pearl, Multi Stone               | Blouse, Belt, Koti    | Available | Ready to wear | Stitched Blouse              | up to 38 Inch, margin of 42 inch |
| 26911     | Two Tone Satin Silk     | Two Tone Satin Silk         | Dual Sequin, Multi Thread, Embroidery Enhanced, Pearls      | Corset Blouse, Jacket | Available | Ready to wear | Stitched Blouse              | up to 38 Inch, margin of 42 inch |
| 26912     | Lustrous Satin Silk     | Milky Satin                 | Floral Motif Embroidery, Pearl, Stone                       | Blouse, Belt          | Available | Ready to wear | Stitched Blouse              | up to 38 Inch, margin of 42 inch |
| 26913     | Natural Crepe Satin     | Satin Silk                  | Sequin, Embroidery, Embellished, Stones, Pearls, Mirror     | Blouse, Belt          | Available | Ready to wear | Stitched Blouse              | up to 38 Inch, margin of 42 inch |
| 26914     | Lustrous Satin Silk     | Tissue Satin Silk           | Floral Sequin, Embroidery, Stone, Pearl Work                | Blouse, Belt          | Available | Ready to wear | Stitched Blouse              | up to 38 Inch, margin of 42 inch |
| 26915     | Georgette Satin         | Georgette Satin             | Floral Applique Embroidered, Sequin, Bead Detailing         | Blouse, Poncho        | Available | Ready to wear | Stitched Blouse              | up to 38 Inch, margin of 42 inch |
| 26916     | Two Tone Satin Silk     | Two Tone Satin Silk         | Floral Motif, Sequin Embroidery, Stone, Pearl Work          | Corset Blouse         | Available | Ready to wear | Stitched Blouse              | up to 38 Inch, margin of 42 inch |
| 26917     | Lustrous Satin Silk     | Double Weaved Jacquard Silk | Oval Stone Detailing Embellished, Sequin, Embroidery        | Blouse, Belt, Jacket  | Available | Ready to wear | Stitched Blouse              | up to 38 Inch, margin of 42 inch |
| 26918     | Lustrous Satin Silk     | Double Weaved Jacquard Silk | Pearl Detailing Embellished, Sequin, Bead Embroidery        | Blouse, Belt, Jacket  | Available | Ready to wear | Stitched Blouse              | up to 38 Inch, margin of 42 inch |
| 26919     | Lustrous Satin Silk     | Double Weaved Jacquard Silk | Embellished Pearl Detailing                                 | Blouse, Belt, Jacket  | Available | Ready to wear | Stitched Blouse              | up to 38 Inch, margin of 42 inch |



26906

26907

26908

26909

26910



26911

26912

26913

26914

26915



26916

26917

26918

26919

It  
*Girl*  
Edit









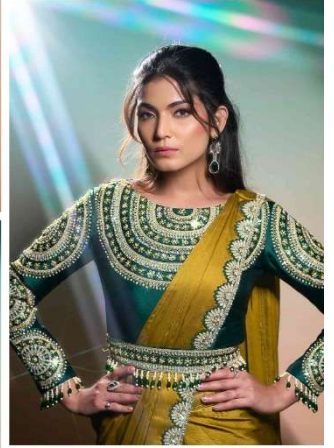
26912  
SAREE STYLE : READY TO WEAR  
FABRIC : LUSTROUS SATIN SILK  
WORK STYLE : FLORAL MOTIF  
EMBROIDERY WITH PEARL & STONE WORK  
ACCESSORIES : BLOUSE, BELT

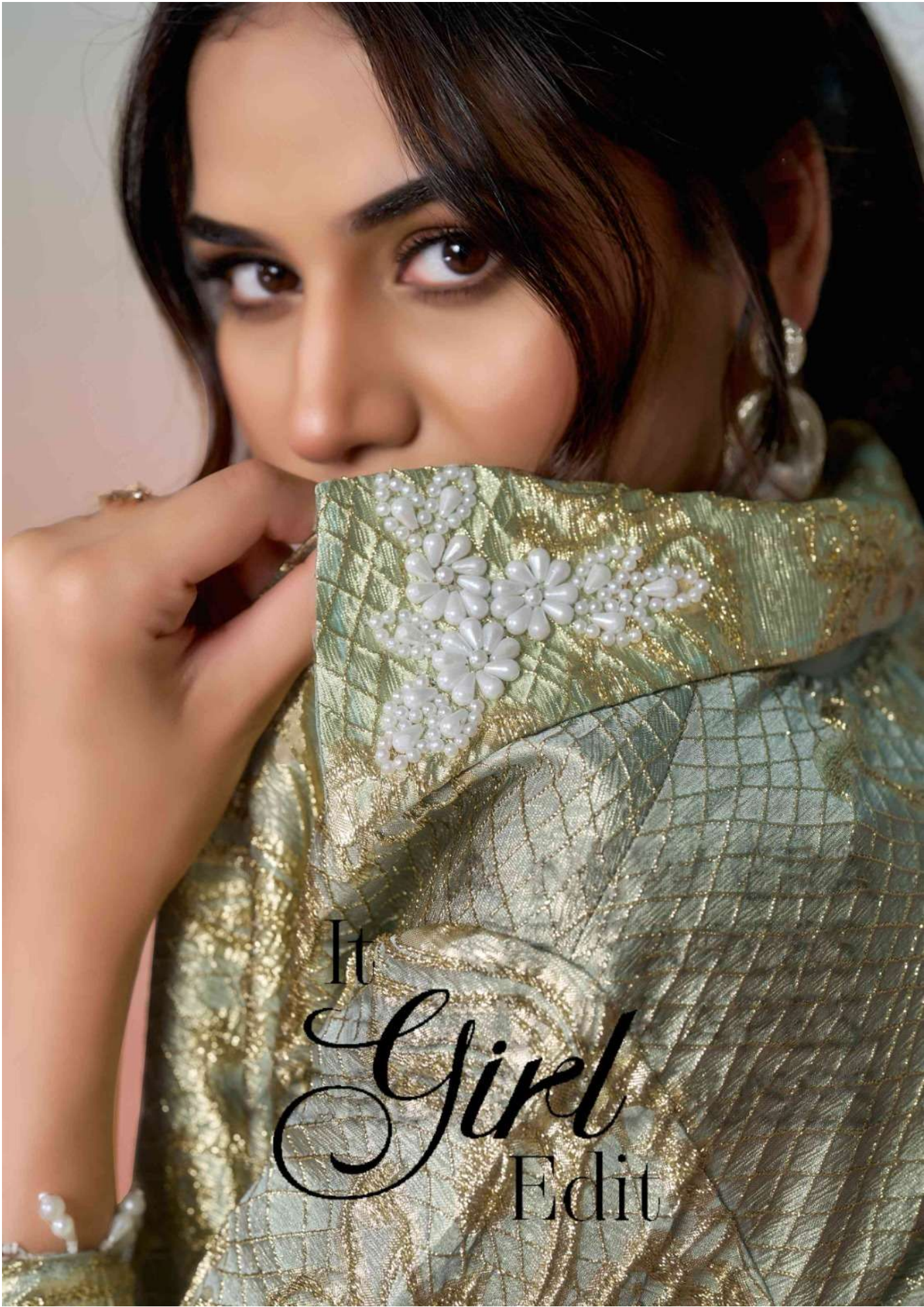
It  
*Girl*  
Edit

A modern  
take on traditional drapes  
with rich fabrics and elegant  
embroidery for a  
contemporary look.



Blending  
*traditon* with a modern edge, the  
collection features stylish elements like belts,  
jackets, corset blouses, capes, ponchos, and koti,  
giving the saree an effortless Indo-western





It  
*Girl*  
Edit



**26907**  
SAREE STYLE : READY TO WEAR  
FABRIC : LUSTROUS SATIN SILK  
WORK STYLE : MULTI THREAD & SEQUIN  
EMBELLISHMENT WITH STONE,  
PEARL & APPLIQUE WORK  
ACCESSORIES : BLOUSE, BELT, JACKET



**26906**  
SAREE STYLE : READY TO WEAR  
FABRIC : LUSTROUS SATIN SILK  
WORK STYLE : FLORAL SEQUIN  
EMBROIDERY HIGHLIGHTED WITH  
PEARL & STONES  
ACCESSORIES : BLOUSE, BELT





26914  
SAREE STYLE : READY TO WEAR  
FABRIC : LUSTROUS SATIN SILK  
WORK STYLE : FLORAL SEQUIN  
EMBROIDERY WITH STONE & PEARL WORK  
ACCESSORIES : BLOUSE, BELT





**26918**  
SAREE STYLE: READY TO WEAR  
FABRIC: LUSTROUS SATIN SILK  
WORK STYLE: PEARL DETAILING  
EMBELLISHED WITH  
SEQUIN & BEAD EMBROIDERY  
ACCESSORIES: BLOUSE, BELT, JACKET





26919  
SAREE STYLE : READY TO WEAR  
FABRIC : TWO TONE SATIN SILK  
WORK STYLE : EMBELLISHED PEARL  
DETAILING  
ACCESSORIES : CORSET BLOUSE



**269H**  
SAREE STYLE : READY TO WEAR  
FABRIC : TWO TONE SATIN SILK  
WORK STYLE : DUAL SEQUIN & MULTI  
THREAD EMBROIDERY ENHANCED  
WITH PEARLS  
ACCESSORIES : CORSET BLOUSE, JACKIE



26915  
SAREE STYLE : READY TO WEAR  
FABRIC : GEORGETTE SATIN  
WORK STYLE : FLORAL APPLIQUE  
EMBROIDDED WITH SEQUIN & BEAD DETAILING  
ACCESSORIES : BLOUSE, PONCHO



26916  
SAREE STYLE : READY TO WEAR  
FABRIC : TWO TONE SATIN SILK  
WORK STYLE : FLORAL MOTIF, SEQUIN  
EMBROIDERY WITH STONE & PEARL WORK  
ACCESSORIES : CORSET BLOUSE





**26917**  
SAREE STYLE : READY TO WEAR  
FABRIC : LUSTROUS SATIN SILK  
WORK STYLE : OVAL STONE DETAILING  
EMBELLISHED WITH SEQUIN EMBROIDERY  
ACCESSORIES : BLOUSE, BELT, JACKET