

HF-501 B

Top :- Heavy Chiffon

Bottom :- Heavy Viscous

Dupatta :- Heavy Chiffon



HOOR TEX

CARE INSTRUCTIONS

DRY CLEAN RECOMMENDED

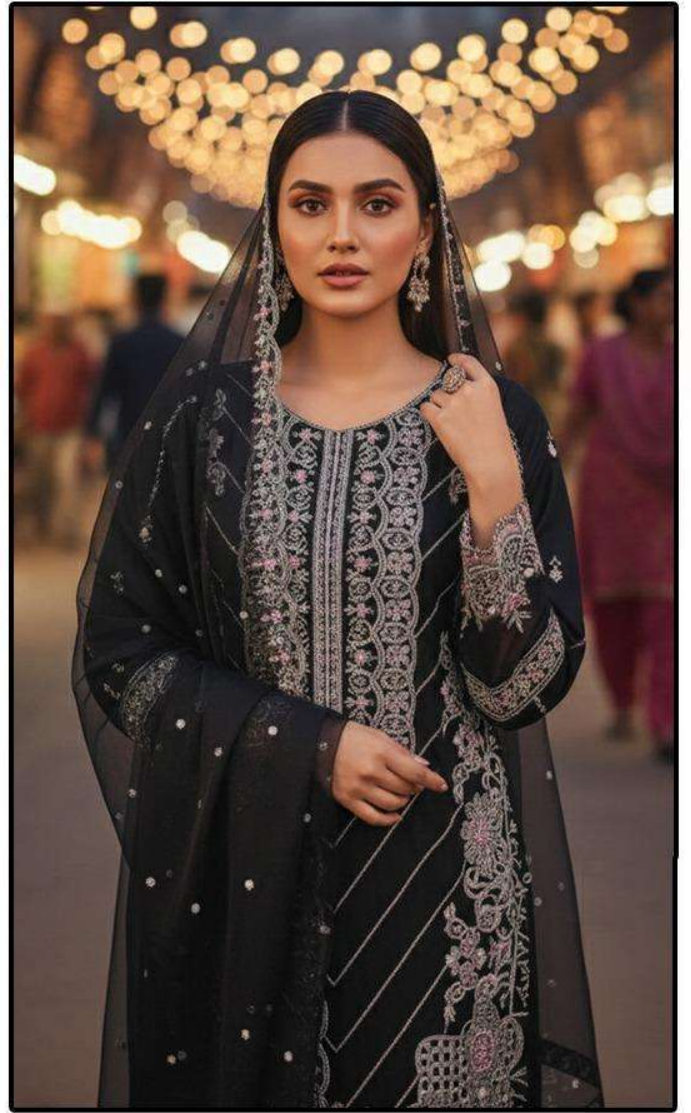
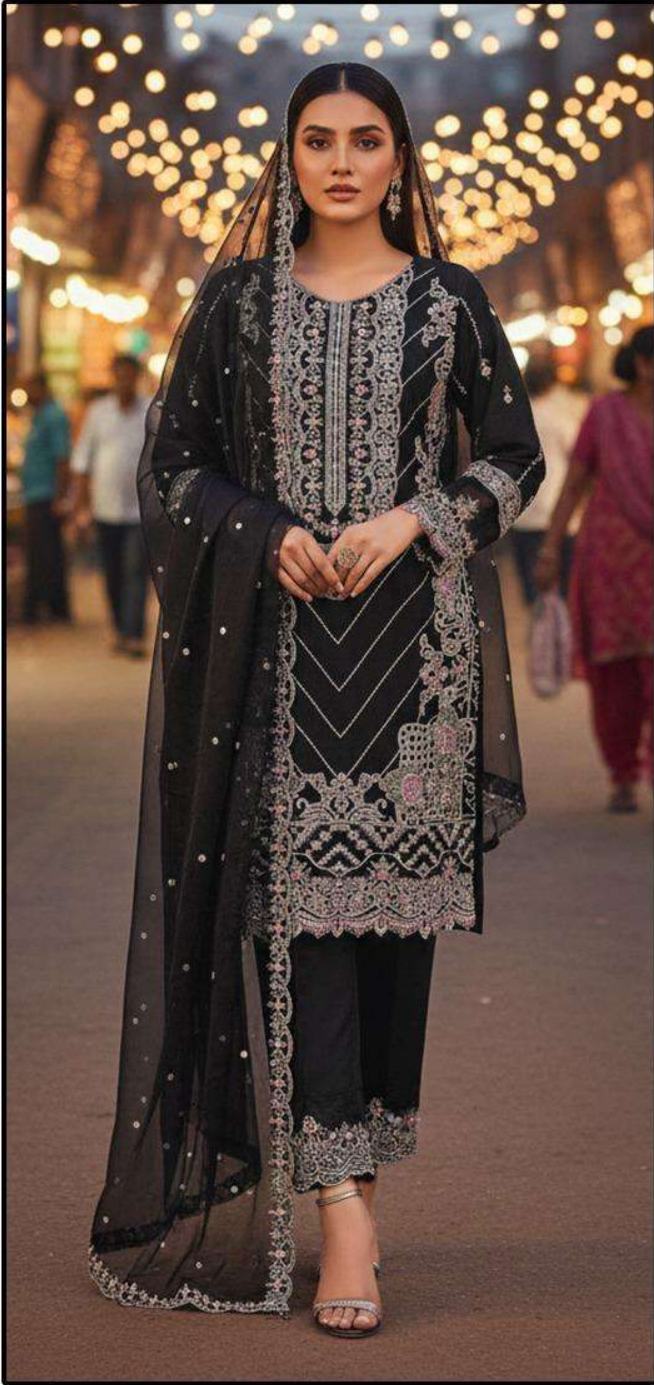
DO NOT USE ANY TYPE OF BLEACH OR STAIN REMOVING CHEMICALS

DO NOT OVER EXPOSE DAMP FABRIC TO STRONG SUNLIGHT

IRON AT MODERATE TEMPERATURE



HF-501



HF-501 B

Top :- Heavy Chiffon

Bottom :- Heavy Viscous

Dupatta :- Heavy Chiffon



HOOR TEX

CARE INSTRUCTIONS

DRY CLEAN RECOMMENDED

DO NOT USE ANY TYPE OF BLEACH OR STAIN REMOVING CHEMICALS

DO NOT OVER EXPOSE DAMP FABRIC TO STRONG SUNLIGHT

IRON AT MODERATE TEMPERATURE



HF-501



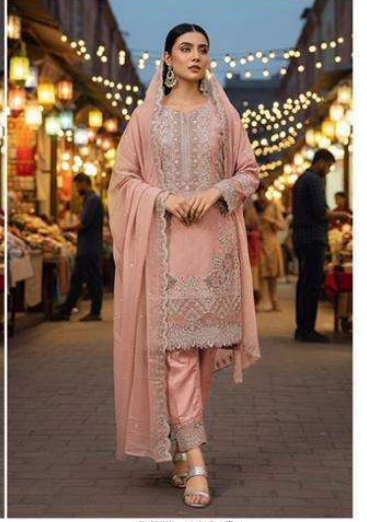
HF-501 A



HF-501 B



HF-501 C



HF-501 D



HOOR TEX

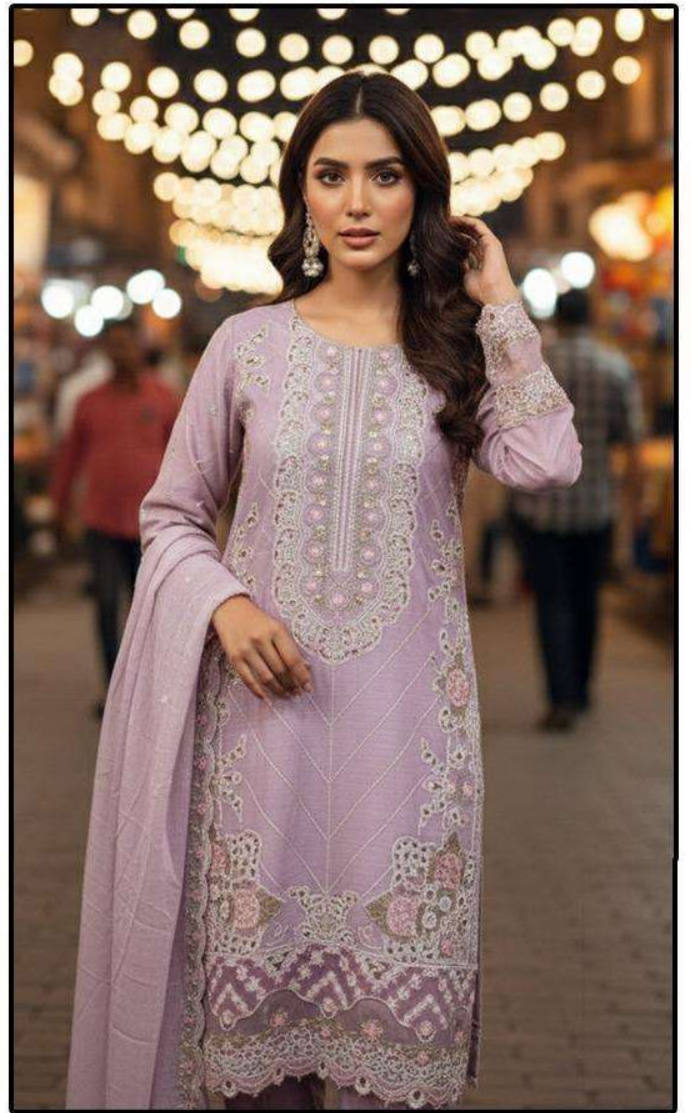
HT

HOOR TEX





HF-501



HF-501 A

Top :- Heavy Chiffon

Bottom :- Heavy Viscous

Dupatta :- Heavy Chiffon



HOOR TEX

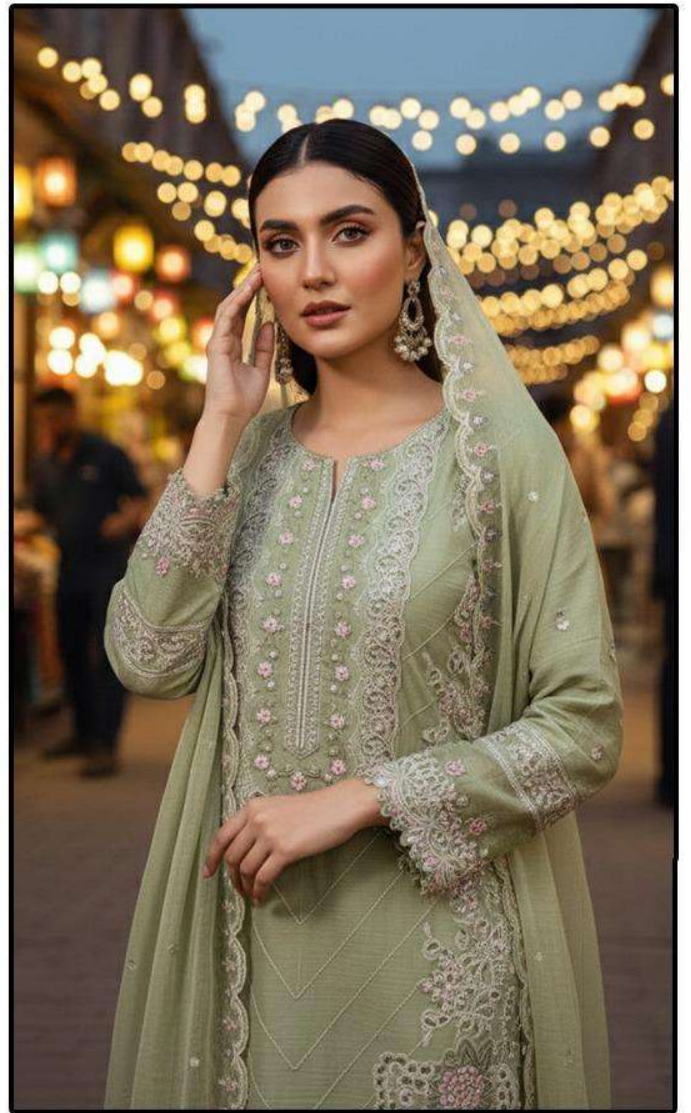
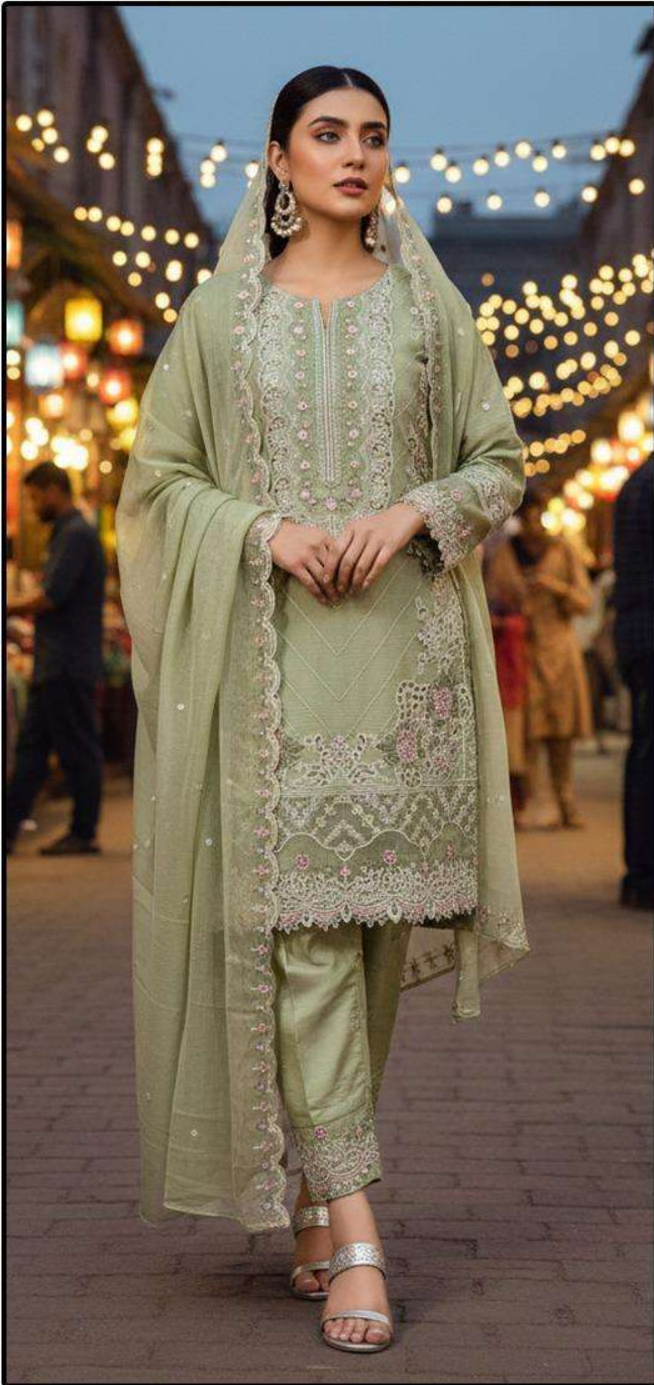
CARE INSTRUCTIONS

DRY CLEAN RECOMMENDED

DO NOT USE ANY TYPE OF BLEACH OR STAIN REMOVING CHEMICALS

DO NOT OVER EXPOSE DAMP FABRIC TO STRONG SUNLIGHT

IRON AT MODERATE TEMPERATURE



HF-501 C

Top :- Heavy Chiffon

Bottom :- Heavy Viscous

Dupatta :- Heavy Chiffon



HOOR TEX

CARE INSTRUCTIONS

DRY CLEAN RECOMMENDED

DO NOT USE ANY TYPE OF BLEACH OR STAIN REMOVING CHEMICALS

DO NOT OVER EXPOSE DAMP FABRIC TO STRONG SUNLIGHT

IRON AT MODERATE TEMPERATURE



HF-501



HF-501 D

Top :- Heavy Chiffon

Bottom :- Heavy Viscous

Dupatta :- Heavy Chiffon



HOOR TEX

CARE INSTRUCTIONS

DRY CLEAN RECOMMENDED

DO NOT USE ANY TYPE OF BLEACH OR STAIN REMOVING CHEMICALS

DO NOT OVER EXPOSE DAMP FABRIC TO STRONG SUNLIGHT

IRON AT MODERATE TEMPERATURE