

15706B





15711

FABRIC: PURE NATURAL
CRAP SILK
WORK STYLE: DUAL SEQUENCE
EMBROIDERY WITH MULTI STONE HANDWORK,
ACCESSORIES: BELT WITH STRAIGHT FANCY FALLU.

15706B





15718-B

Saree Style : *Ready to wear*
Fabric : *Two Tone Satin Silk*
Work : *Sequins with Pearl Work*
Accessories : *Blouse, Poncho, Belt*



15719

Saree Style : Ready to wear
Fabric : Two Tone Satin Silk
Work : Dual Sequins with Pearl Work
Accessories : Blouse, Poncho, Belt



15718

Saree Style : Ready to wear
Fabric : Two Tone Satin Silk
Work : Sequins with Pearl Work
Accessories : Blouse, Poncho, Belt



15720

Saree Style : Ready to wear
Fabric : Two Tone Satin Silk
Work : Pearl with Handwork
Accessories : Blouse, Poncho, Belt



15715

FABRIC : Crepe Satin Silk
Semi Ready - To - Wear Blouse
Accessories With : A Designer Belt



15709

FABRIC: SOFT SATIN SILK
WORK STYLE: DUAL SEQUENCE
EMBROIDERY WITH APPLIC
FLOWER & STONE HANDWORK
ACCESSORIES: BELT WITH FANCY SHRUG & PALLU.





15716

Saree Style : Ready to wear
Fabric : Crepe Satin Silk
Work : Crepe Satin Silk
Accessories : Blouse, Poncho, Belt



15714

FABRIC: SOFT SATIN SILK
WORK STYLE: DUAL SEQUENCE
EMBROIDERY WITH PURLS & STONE HANDWORK
ACCESSORIES: BELT WITH FANCY A-LINE PALLU.



15717

Saree Style : Ready to wear
Fabric : Two Tone Satin Silk
Work : Dual Sequins with Pearl Work
Accessories : Blouse, Belt



15705

FABRIC: SIFFONE SATIN SILK
WORK STYLE: SEQUENCE EMBROIDERY
WITH STONE HANDWORK
ACCESSORIES: BELT WITH FANCY PALLU.

15711C



15711B





15702
FABRIC: SOFT SATIN SILK
WORK STYLE: DUAL SEQUENCE EMBROIDERY WITH MULTI STONE HANDWORK.
ACCESSORIES: BELT WITH FANCY PALLU.



15707

FABRIC: SOFT SATIN SILK
WORK STYLE: DUAL SEQUENCE
EMBROIDERY WITH STONE HANDWORK.
ACCESSORIES: BELT WITH
FANCY PALLU & LATKANE.



15713

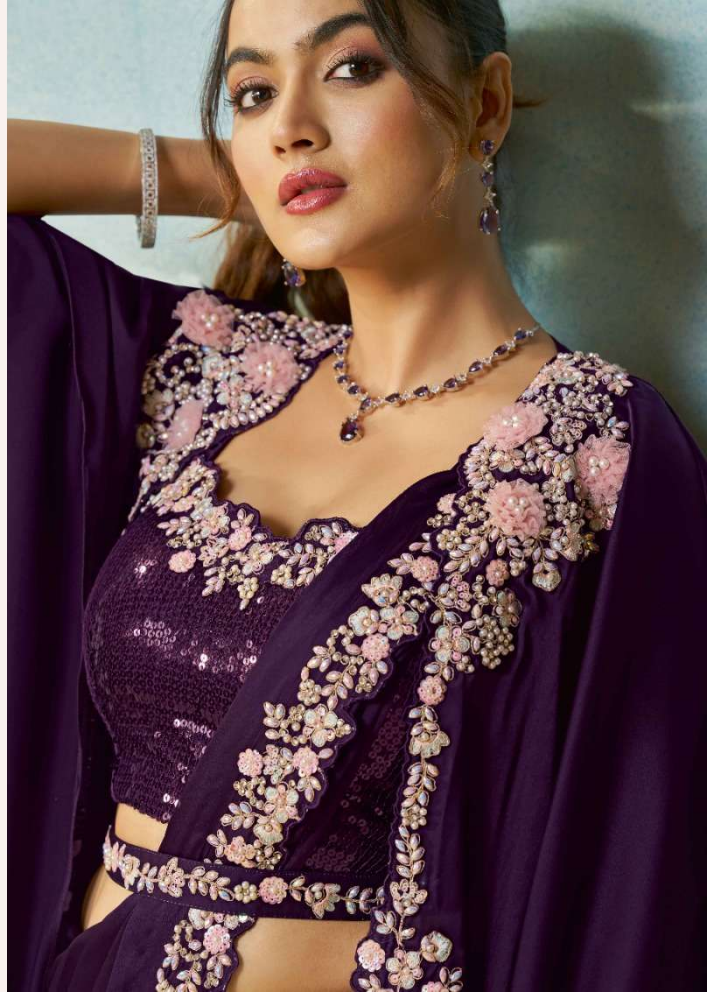
FABRIC: SOFT SATIN SILK
WORK STYLE: SEQUENCE
EMBROIDERY WITH MULTI STONE HANDWORK.
ACCESSORIES: BELT WITH FANCY PALLU.

15711D





15709





15704

FABRIC: TWO TONE SATIN SILK
WORK STYLE: DUAL SEQUENCE
EMBROIDERY WITH PURLS & STONE HANDWORK
ACCESSORIES: BELT WITH FANCY PALLU & LATKAN



15710
FABRIC: TWO TONE SATIN SILK
WORK STYLE: DUAL
SEQUENCE EMBROIDERY
WITH PURLS & STONE HANDWORK.
ACCESSORIES: BELT WITH FANCY PALLU.



| DESIGN NO | SAREE FABRIC | BLOUSE FABRIC | WORK | Accessories | Belt | SAREE TYPE | CUSTZ.(SEMISTITCH/UN-STITCH) | BLOUSE SIZE |
|-----------|---------------------|---------------------|--|----------------------------|-----------|---------------|------------------------------|--------------------------------------|
| 15702 | Satin Silk | Satin Silk | Dual Sequence, Embroidery, Multi Stone Handwork | Waist Belt, Straight Pallu | Available | Ready to wear | Stitched Blouse | up to 38 Inch with margin of 42 inch |
| 15704 | Two Tone Satin Silk | Organza Tissue | Four Sequence, Embroidery, Multi Stone Handwork | Waist Belt, Straight Pallu | Available | Ready to wear | Stitched Blouse | up to 38 Inch with margin of 42 inch |
| 15705 | Siffone Satin Silk | Siffone Satin Silk | Silver Sequence, Embroidery, Stone, Pearl Handwrok | Waist Belt, Fancy Pallu | Available | Ready to wear | Stitched Blouse | up to 38 Inch with margin of 42 inch |
| 15706-B | Satin Silk | Malai Satin Silk | Silver Sequence, Embroidery, Stone, Pearl Handwrok | Waist Belt, Straight Pallu | Available | Ready to wear | Stitched Blouse | up to 38 Inch with margin of 42 inch |
| 15707 | Satin Silk | Satin Silk | Dual Sequence, Embroidery, Multi Sone, Mirror Handwork | Waist Belt, Fancy Pallu | Available | Ready to wear | Stitched Blouse | up to 38 Inch with margin of 42 inch |
| 15709 | Satin Silk | Satin Silk | Sequence, Embroidery, Applique Flower, Stone, Handwork | Waist Belt, Shrugs, Pallu | Available | Ready to wear | Stitched Blouse | up to 38 Inch with margin of 42 inch |
| 15710 | Two Tone Satin Silk | Organza Tissue | Dual Sequence, Embroidery, Silver Stone Handwork | Waist Belt, Straight Pallu | Available | Ready to wear | Stitched Blouse | up to 38 Inch with margin of 42 inch |
| 15711 | Natural Satin Silk | Natural Satin Silk | Dual Sequence, Embroidery, Silver Stone Handwork | Waist Belt, Straight Pallu | Available | Ready to wear | Stitched Blouse | up to 38 Inch with margin of 42 inch |
| 15711-B | Natural Satin Silk | Natural Satin Silk | Dual Sequence, Embroidery, Silver Stone Handwork | Waist Belt, Straight Pallu | Available | Ready to wear | Stitched Blouse | up to 38 Inch with margin of 42 inch |
| 15711-C | Natural Satin Silk | Natural Satin Silk | Dual Sequence, Embroidery, Silver Stone Handwork | Waist Belt, Straight Pallu | Available | Ready to wear | Stitched Blouse | up to 38 Inch with margin of 42 inch |
| 15711-D | Natural Satin Silk | Natural Satin Silk | Dual Sequence, Embroidery, Silver Stone Handwork | Waist Belt, Straight Pallu | Available | Ready to wear | Stitched Blouse | up to 38 Inch with margin of 42 inch |
| 15713 | Satin Silk | Satin Silk | Sequence, Embroidery, Multi Stone Handwork | Waist Belt, Fancy Pallu | Available | Ready to wear | Stitched Blouse | up to 38 Inch with margin of 42 inch |
| 15714 | Satin Silk | Satin Silk | Dual Sequence, Embroidery, Pearl, Stone, Handwork | Waist Belt, A-line Pallu | Available | Ready to wear | Stitched Blouse | up to 38 Inch with margin of 42 inch |
| 15715 | Crape Satin Silk | Malai Satin | Cord, Sequence, Thread, Stone, Moti | Waist Belt, Fancy Pallu | Available | Ready to wear | Stitched Blouse | up to 38 Inch with margin of 42 inch |
| 15716 | Crepe Satin Silk | Malai Satin | Dual Sequence, Hand Work | Poncho, Waist Belt | Available | Ready to wear | Stitched Blouse | up to 38 Inch with margin of 42 inch |
| 15717 | Two Tone Satin Silk | Malai Satin | Dual Sequence, Hand Work | Waist Belt, Fancy Pallu | Available | Ready to wear | Stitched Blouse | up to 38 Inch with margin of 42 inch |
| 15718 | Two Tone Satin Silk | Malai Satin | Sequence Pearl Work | Poncho, Waist Belt | Available | Ready to wear | Stitched Blouse | up to 38 Inch with margin of 42 inch |
| 15718-B | Two Tone Satin Silk | Malai Satin | Sequence Pearl Work | Poncho, Waist Belt | Available | Ready to wear | Stitched Blouse | up to 38 Inch with margin of 42 inch |
| 15719 | Two Tone Satin Silk | Malai Satin | Dual Sequence, Pearl Work | Poncho, Waist Belt | Available | Ready to wear | Stitched Blouse | up to 38 Inch with margin of 42 inch |
| 15720 | Two Tone Satin Silk | Two Tone Satin Silk | Pearl, Hand Work | Poncho, Waist Belt | Available | Ready to wear | Stitched Blouse | up to 38 Inch with margin of 42 inch |