



T  
B  
D



HF-818



HF-818



*HF-818 A*

*Top :- Heavy Satin*

*Bottom :- Heavy Satin*

*Dupatta :- Importad Checks*

**CARE INSTRUCTIONS**

DRY CLEAN RECOMMENDED

DO NOT USE ANY TYPE OF BLEACH OR STAIN REMOVING CHEMICALS

DO NOT OVER EXPOSE DAMP FABRIC TO STRONG SUNLIGHT

IRON AT MODERATE TEMPERATURE



**HOOR TEX**



*HF-818 B*

*Top :- Heavy Satin*

*Bottom :- Heavy Satin*

*Dupatta :- Importad Checks*

**CARE INSTRUCTIONS**

DRY CLEAN RECOMMENDED

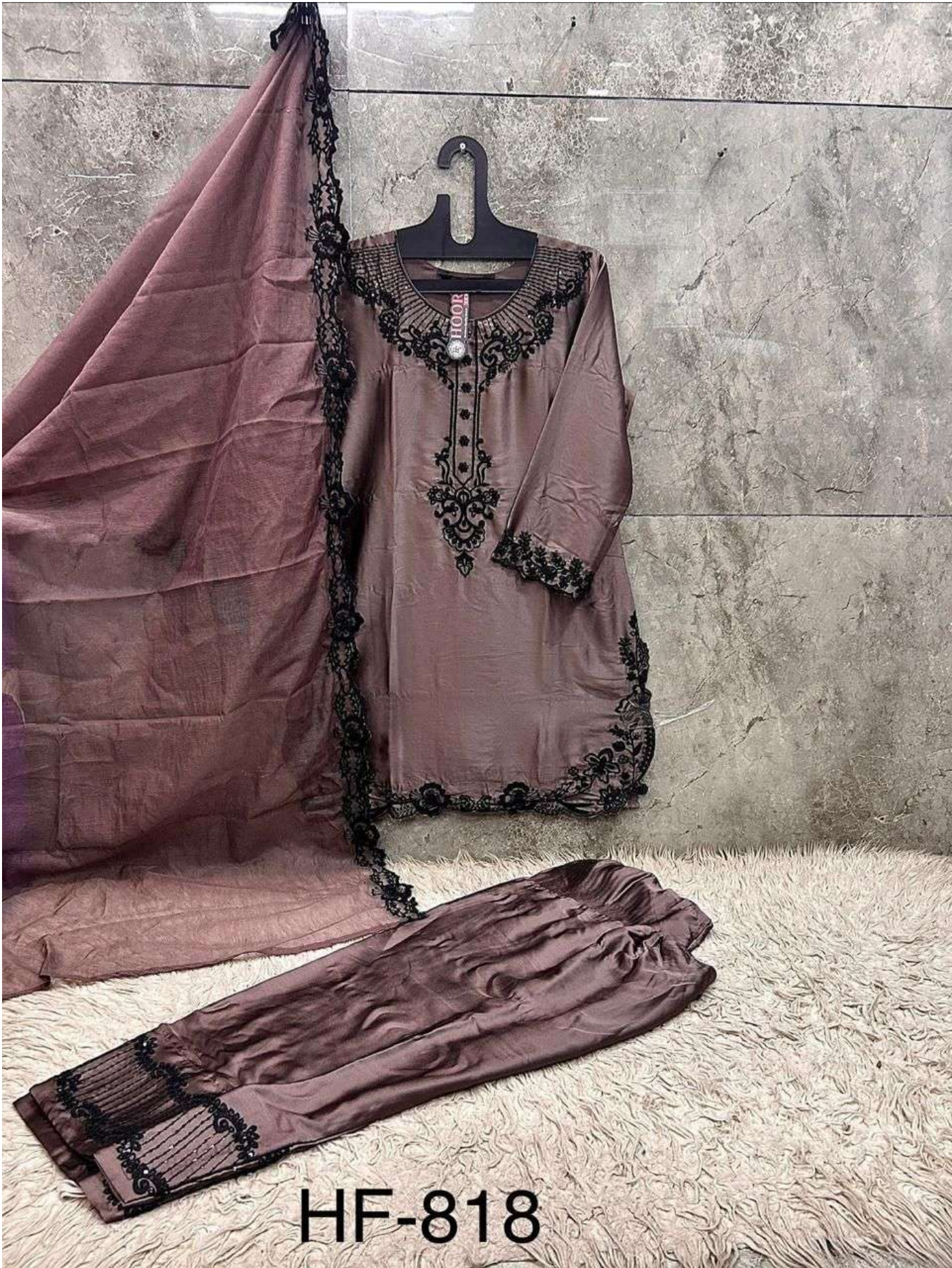
DO NOT USE ANY TYPE OF BLEACH OR STAIN REMOVING CHEMICALS

DO NOT OVER EXPOSE DAMP FABRIC TO STRONG SUNLIGHT

IRON AT MODERATE TEMPERATURE



**HOOR TEX**



HF-818



HF-818



*HF-818 D*

*Top :- Heavy Satin*

*Bottom :- Heavy Satin*

*Dupatta :- Importad Checks*

**CARE INSTRUCTIONS**

DRY CLEAN RECOMMENDED

DO NOT USE ANY TYPE OF BLEACH OR STAIN REMOVING CHEMICALS

DO NOT OVER EXPOSE DAMP FABRIC TO STRONG SUNLIGHT

IRON AT MODERATE TEMPERATURE



**HOOR TEX**



*HF-818 C*

*Top :- Heavy Satin*

*Bottom :- Heavy Satin*

*Dupatta :- Importad Checks*

**CARE INSTRUCTIONS**

DRY CLEAN RECOMMENDED

DO NOT USE ANY TYPE OF BLEACH OR STAIN REMOVING CHEMICALS

DO NOT OVER EXPOSE DAMP FABRIC TO STRONG SUNLIGHT

IRON AT MODERATE TEMPERATURE



**HOOR TEX**



HF-818 A



HF-818 B



HF-818 C



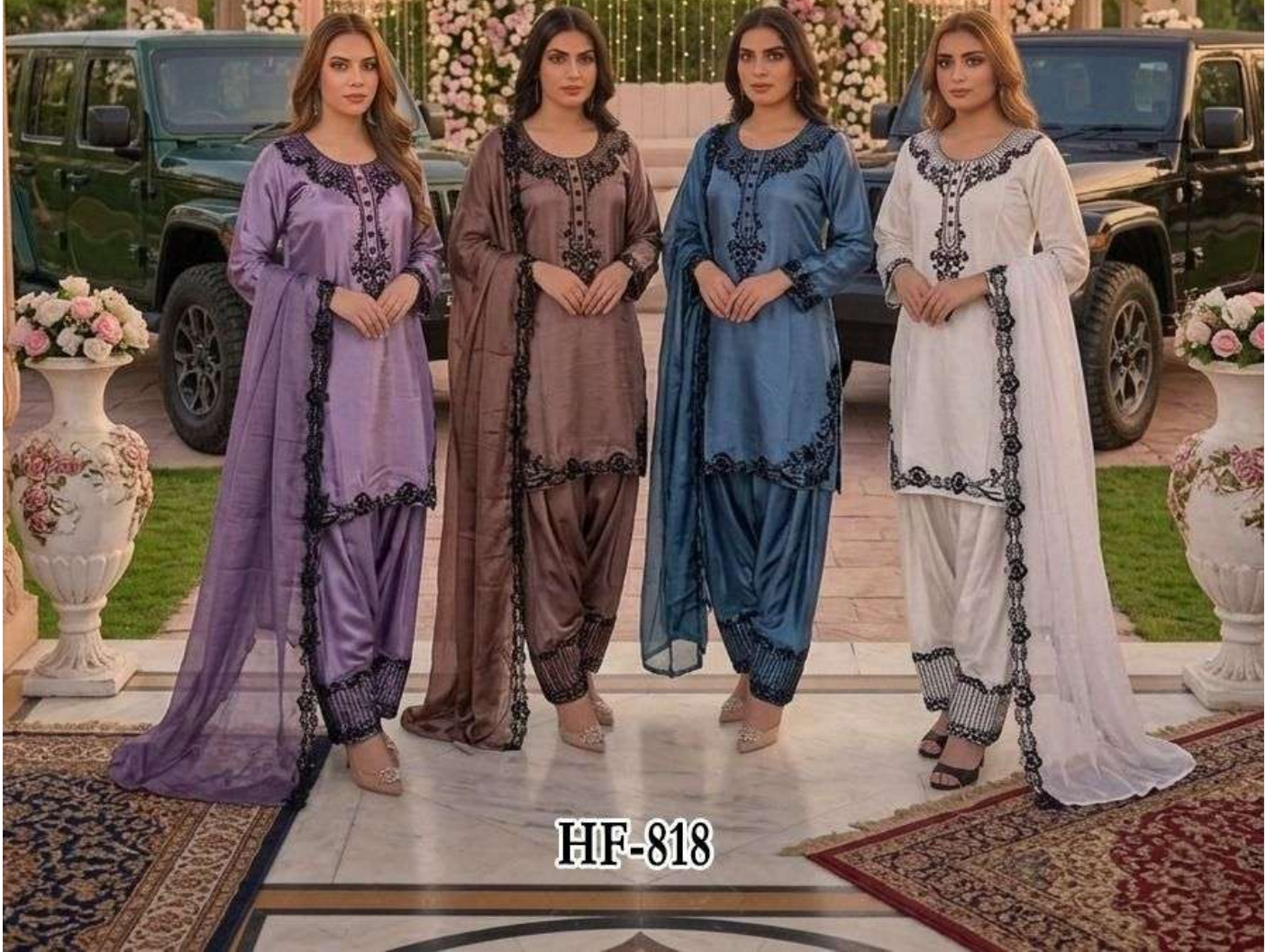
HF-818 D



HOOR TEX

The logo consists of the letters 'H' and 'T' in a stylized, overlapping font. The 'H' is on the left and the 'T' is on the right, with the top bar of the 'T' extending over the 'H'. The letters are red with a white outline.

**HOOR TEX**



**HF-818**