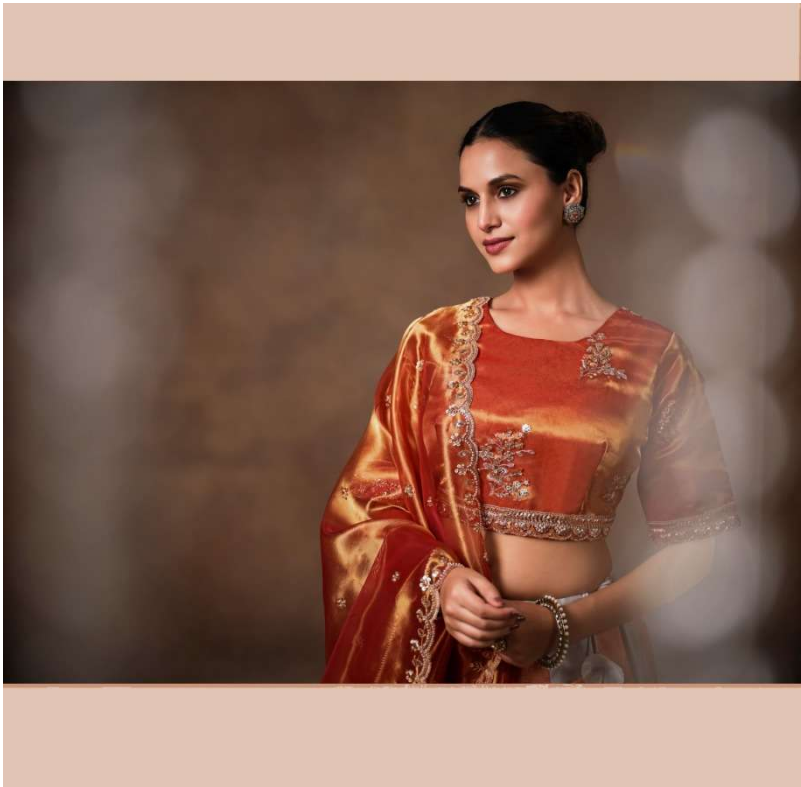


VIRASAT











D.no T3002

Dola silk & Natural crape



D.no T3001

Banarasi Pure Vriscos crush Tissue



T3004

Glass tissue & pure bandhej



T3005

Natruil crape & pure bandhej



T3006

Natural crape & position



D.no T3003

Banarasi brochet & Vriscos tissue crush



T3008

Dola tissue patoda



T3009

Tissue With Border



T3007

Pure banarasi kinkhab & Dola silk



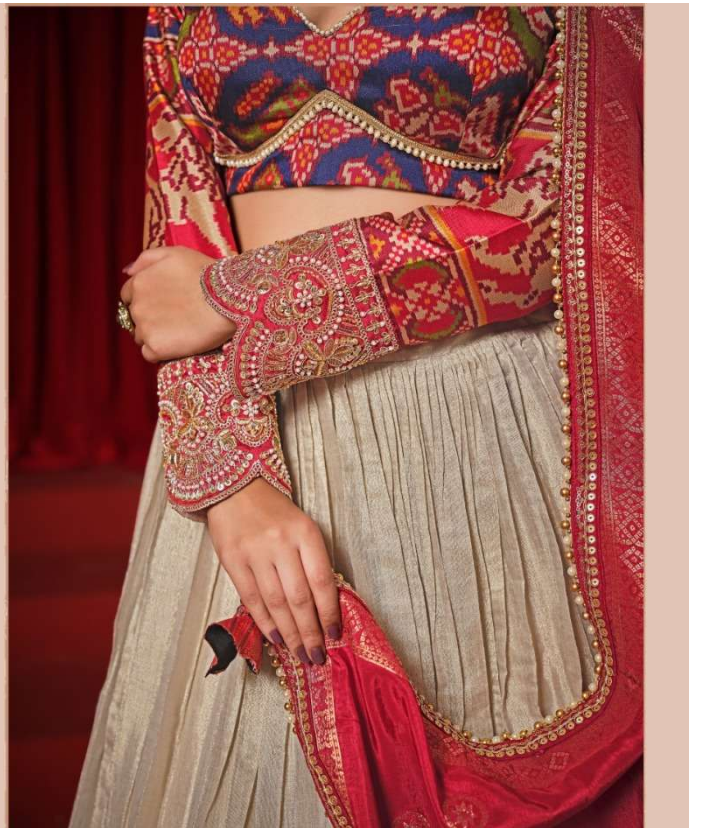
T30011

Tissue silk & Banarasi brochet



T30010

Pure banarasi kinkhab & dola silk

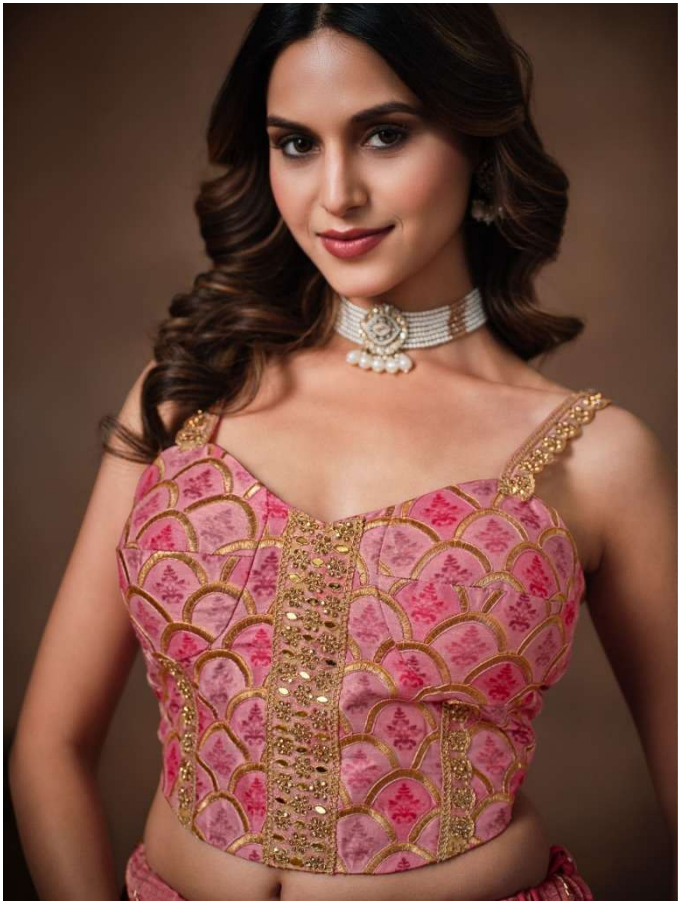






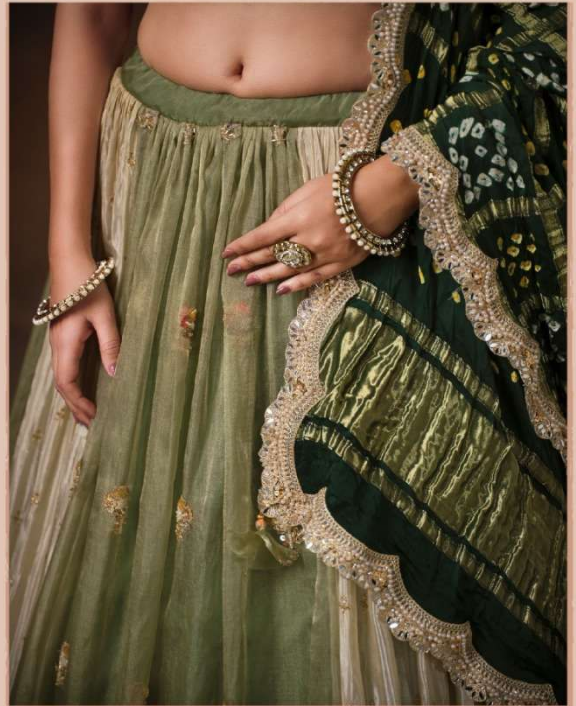












CODE	RATE	FABRIC
T3001	6975/-	Banarasi Pure Viscos crush Tissue
T3002	11625/-	Dola silk & Natural crape
T3003	6625/-	Banarasi brochet & Viscos tissue crush
T3004	9299/-	Glass tissue & pure bandhej
T3005	9299/-	Natrul crape & pure bandhej
T3006	6395/-	Natural crape & position
T3007	8485/-	Pure banarasi kinkhab & Dola silk
T3008	8485/-	Dola tissue patoda
T3009	6975/-	Tissue With Border
T30010	10115/-	Pure banarasi kinkhab & dola silk
T30011 (A)	10115/-	Tissue silk & Banarasi brochet With Jaal Dupatta
T30011 (B)	8145/-	Tissue silk & Banarasi brochet With Plain Dupatta
GST : 18 % Applicable After Company Rate		
LEHENGA LENGTH :42		
LEHENGA FLAIR : 4.5		
LEHENGA (WAIST)SIZE 38(L)		
BLOUSE SIZE : 36 chest With 2 Inch Margin		







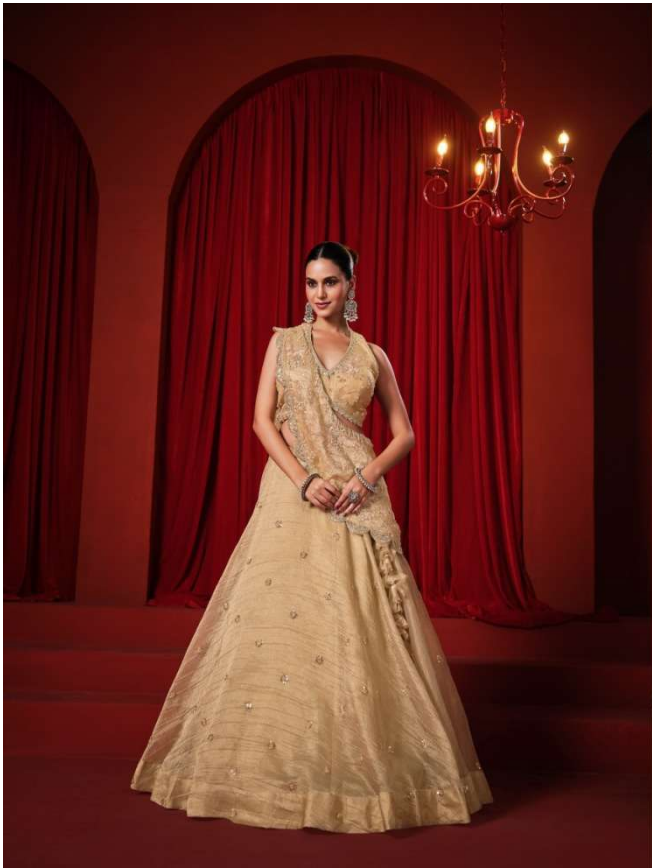


















VIRASAT





