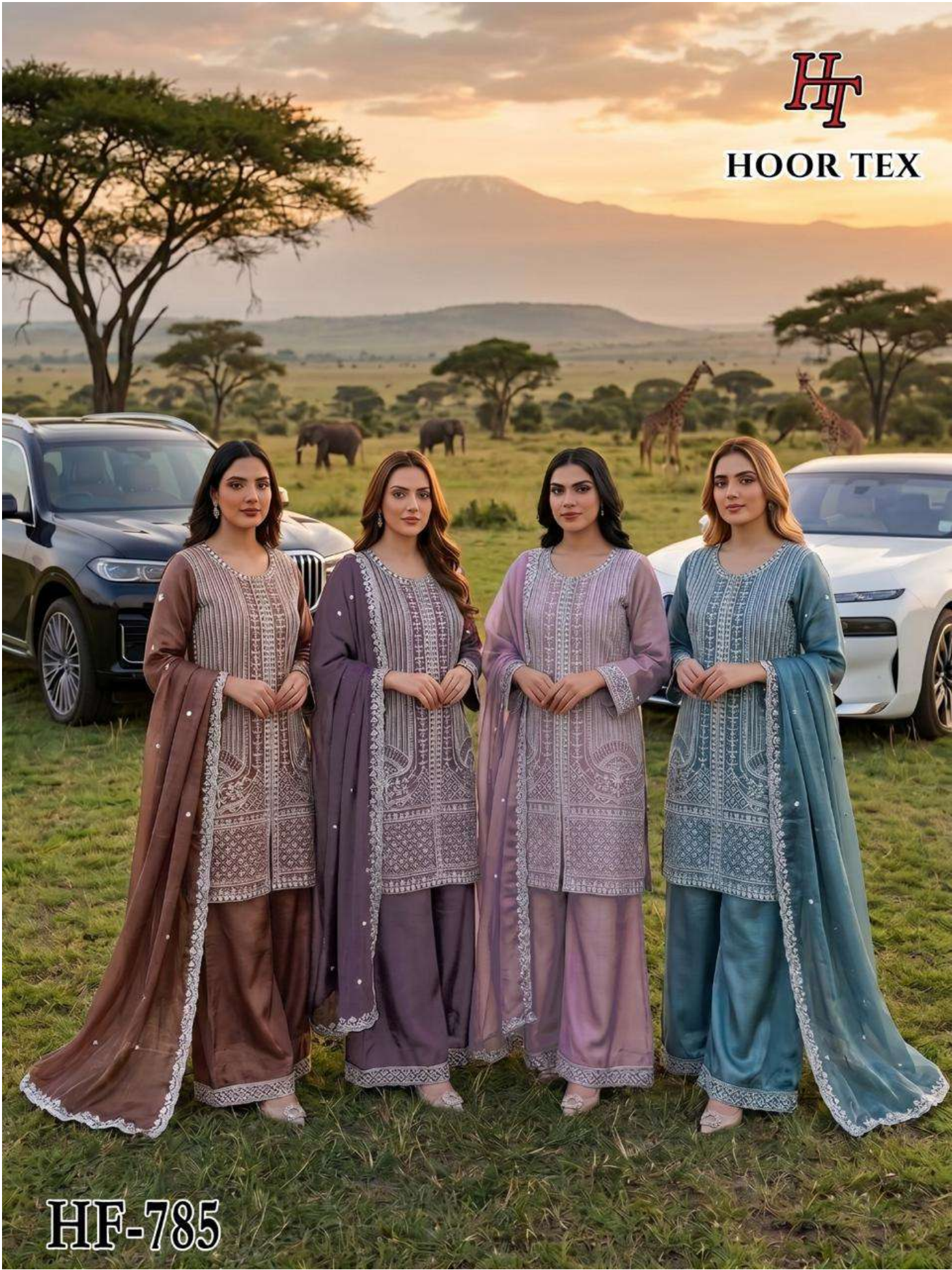






HOOR TEX



HF-785



HF-785 D

Top :- Heavy Royal Rimzim

Bottom :- Heavy Royal Rimzim

Dupatta :- Heavy Royal Rimzim

CARE INSTRUCTIONS

DRY CLEAN RECOMMENDED

DO NOT USE ANY TYPE OF BLEACH OR STAIN REMOVING CHEMICALS

DO NOT OVER EXPOSE DAMP FABRIC TO STRONG SUNLIGHT

IRON AT MODERATE TEMPERATURE



HOOR TEX



HF-785



HF-785 A

Top :- Heavy Royal Rimzim

Bottom :- Heavy Royal Rimzim

Dupatta :- Heavy Royal Rimzim

CARE INSTRUCTIONS

DRY CLEAN RECOMMENDED

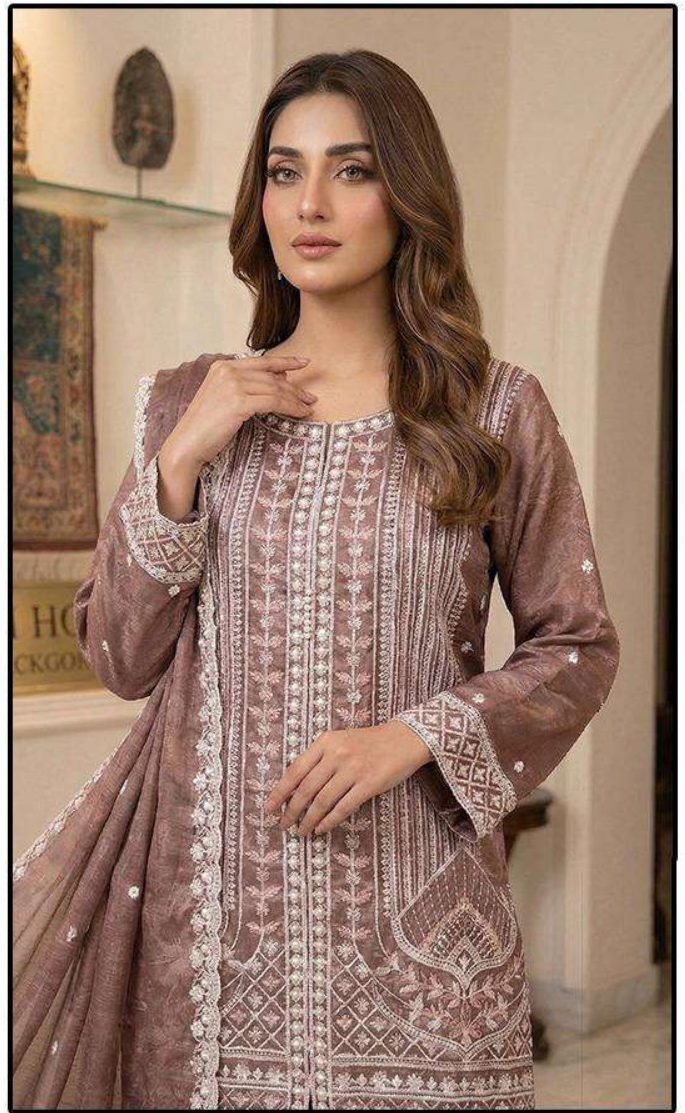
DO NOT USE ANY TYPE OF BLEACH OR STAIN REMOVING CHEMICALS

DO NOT OVER EXPOSE DAMP FABRIC TO STRONG SUNLIGHT

IRON AT MODERATE TEMPERATURE



HOOR TEX



HF-785 C

Top :- Heavy Royal Rimzim

Bottom :- Heavy Royal Rimzim

Dupatta :- Heavy Royal Rimzim

CARE INSTRUCTIONS

DRY CLEAN RECOMMENDED

DO NOT USE ANY TYPE OF BLEACH OR STAIN REMOVING CHEMICALS

DO NOT OVER EXPOSE DAMP FABRIC TO STRONG SUNLIGHT

IRON AT MODERATE TEMPERATURE



HOOR TEX



HF-785



HF-785 B

Top :- Heavy Royal Rimzim

Bottom :- Heavy Royal Rimzim

Dupatta :- Heavy Royal Rimzim

CARE INSTRUCTIONS

DRY CLEAN RECOMMENDED

DO NOT USE ANY TYPE OF BLEACH OR STAIN REMOVING CHEMICALS

DO NOT OVER EXPOSE DAMP FABRIC TO STRONG SUNLIGHT

IRON AT MODERATE TEMPERATURE



HOOR TEX



HF-785



HF-785