





HF-799 C

Top :- H.O.Glass Slik

Bottom :- H.O.Glass Slik

Dupatta :- Heavy Georgette



HOOR TEX

CARE INSTRUCTIONS

DRY CLEAN RECOMMENDED

DO NOT USE ANY TYPE OF BLEACH OR STAIN REMOVING CHEMICALS

DO NOT OVER EXPOSE DAMP FABRIC TO STRONG SUNLIGHT

IRON AT MODERATE TEMPERATURE



HF-799



HF-799



HF-799



HF-799 A

Top :- H.O.Glass Slik

Bottom :- H.O.Glass Slik

Dupatta :- Heavy Georgette



CARE INSTRUCTIONS

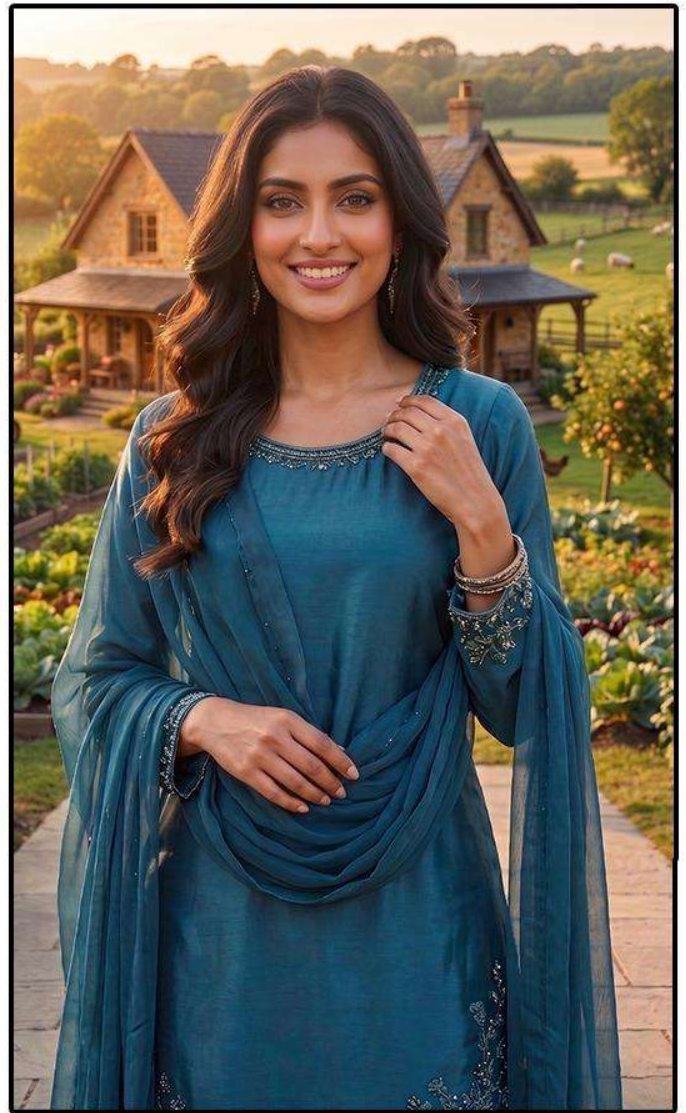
DRY CLEAN RECOMMENDED

DO NOT USE ANY TYPE OF BLEACH OR STAIN REMOVING CHEMICALS

DO NOT OVER EXPOSE DAMP FABRIC TO STRONG SUNLIGHT

IRON AT MODERATE TEMPERATURE

HOOR TEX



HF-799 B

Top :- H.O.Glass Slik

Bottom :- H.O.Glass Slik

Dupatta :- Heavy Georgette



CARE INSTRUCTIONS

DRY CLEAN RECOMMENDED
DO NOT USE ANY TYPE OF BLEACH OR STAIN REMOVING CHEMICALS
DO NOT OVER EXPOSE DAMP FABRIC TO STRONG SUNLIGHT
IRON AT MODERATE TEMPERATURE

HOOR TEX



HF-799



HF-799 D

Top :- H.O.Glass Slik

Bottom :- H.O.Glass Slik

Dupatta :- Heavy Georgette



CARE INSTRUCTIONS

DRY CLEAN RECOMMENDED

DO NOT USE ANY TYPE OF BLEACH OR STAIN REMOVING CHEMICALS

DO NOT OVER EXPOSE DAMP FABRIC TO STRONG SUNLIGHT

IRON AT MODERATE TEMPERATURE

HOOR TEX



HF-799 A



HF-799 B



HF-799 C



HF-799 D



HOOR TEX