

MANN RASIYA



3158

A wild summer story woven in light fabrics and fearless style.





UNTAMED

Summer Elegance

Under the endless summer sky, the
Wild Muse walks with confidence,
wearing garments that echo the rhythm of
nature and the timeless charm of effortless fashion.



MANN RASIYA



Fashion touched by sunshine and inspired by the wild.

3157

MANN RASIYA



3158

A wild summer story woven in light fabrics and fearless style.



MANN RASIYA

Eliette



3156



3157



3158

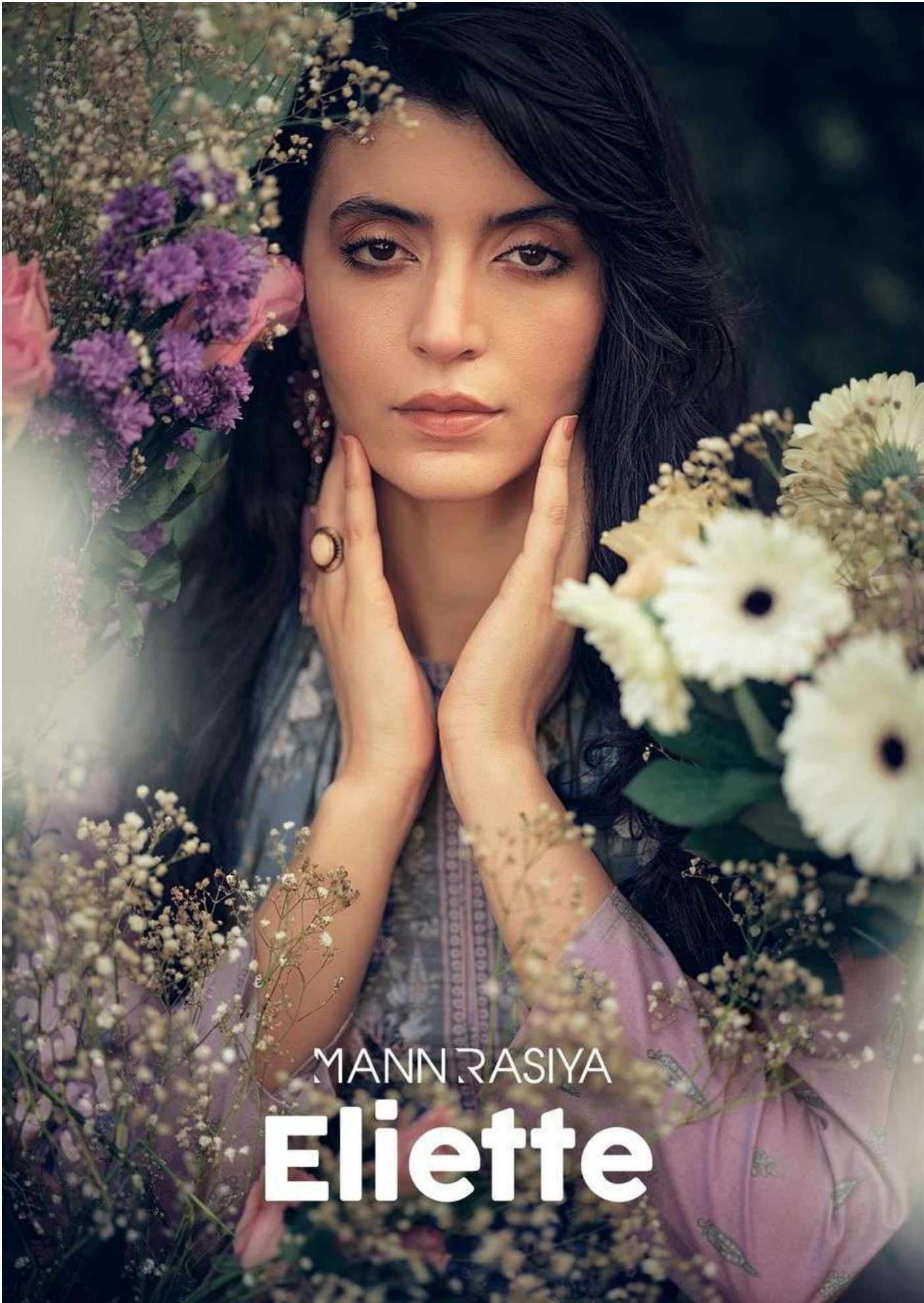


3159



Summer Wild Muse — where fashion flows with the untamed spirit of nature.





MANN RASIYA
Eliette



WILD MUSE









MANN RASIYA



3159

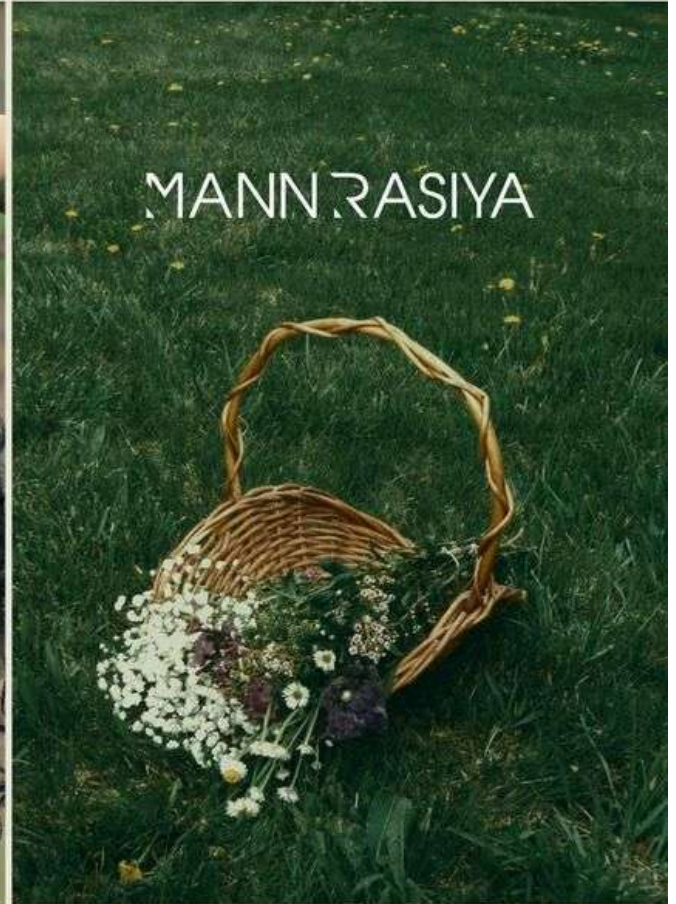
A season of sun, style, and untamed fashion.



THE SPIRIT OF SUMMER. *The Soul of A MUSE*

Summer Wild Muse tells the story of a woman who moves with the breeze, embracing bold style, natural grace, and the golden glow of a season filled with freedom and beauty.





SUMMER *Wild Muse:* *Fashion* UNTAMED

Summer Wild Muse celebrates the fearless spirit of fashion where nature and style meet in effortless harmony. Flowing fabrics, sun-kissed colors, and untamed silhouettes capture the essence of a woman who moves freely with the wind and light. Inspired by wild landscapes and golden sunshine, every garment tells a story of confidence, beauty, and natural elegance.


Summer Wild Muse captures the untamed beauty of the season, where fashion flows as freely as the warm summer breeze. Inspired by nature's raw elegance, the garments embrace soft textures, sunlit colors, and effortless silhouettes that reflect confidence and freedom. Each look tells the story of a muse who moves with grace through wild landscapes, blending style with the spirit of summer. It is a celebration of bold femininity, natural charm, and the timeless connection between fashion and the vibrant energy of the wild.



Fashion touched by sunshine and inspired by the wild.



A SUMMER MUSE *dressed in freedom
and flowing* SILHOUETTES.

In the heart of summer, the Wild Muse awakens,
dressed in airy textures and radiant tones
that reflect the harmony between fashion, nature,
and fearless feminine elegance. 

MANN RASIYA



3156

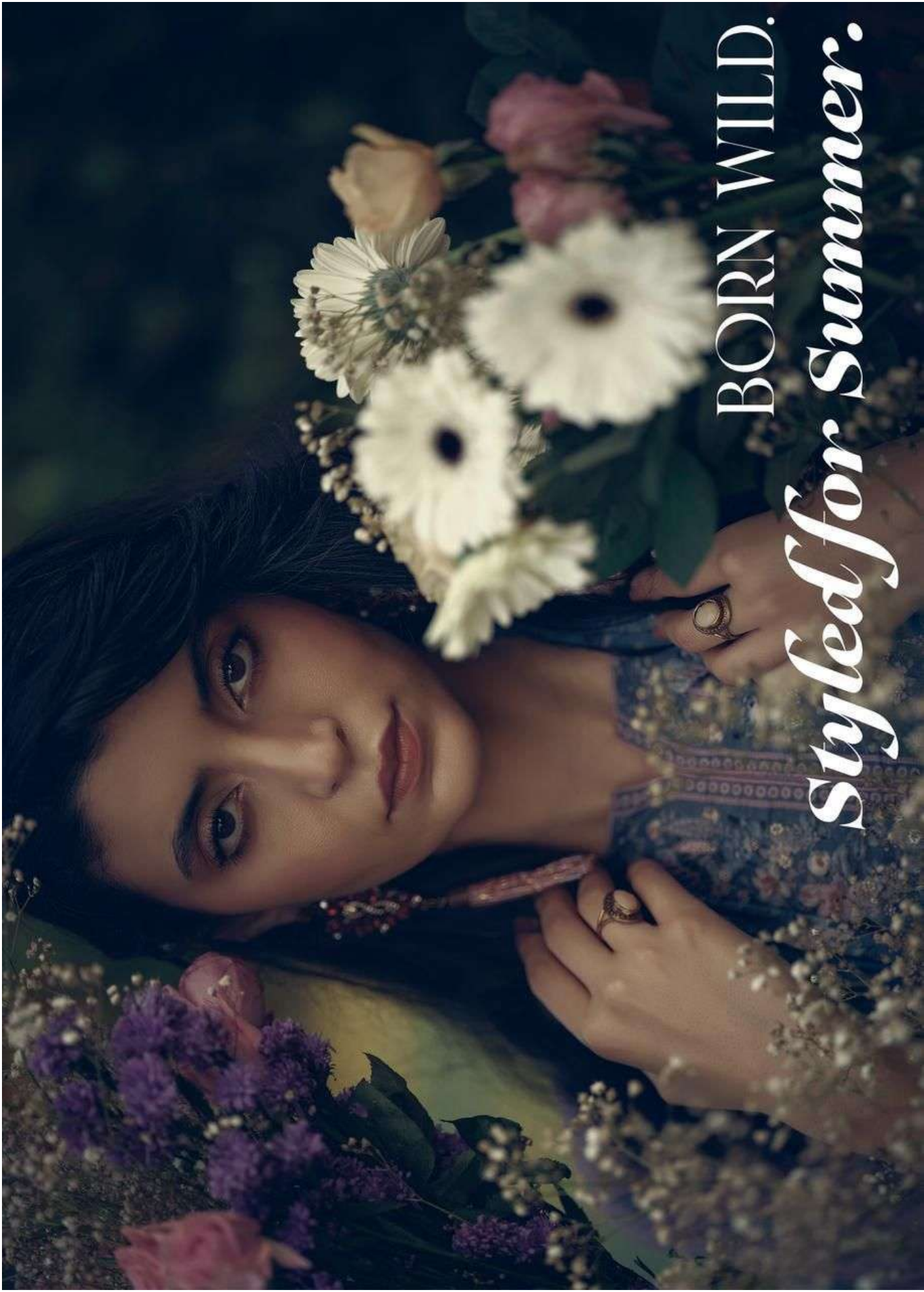
Summer Wild Muse — where fashion flows with the untamed spirit of nature.











BORN WILD.

Styled for Summer.