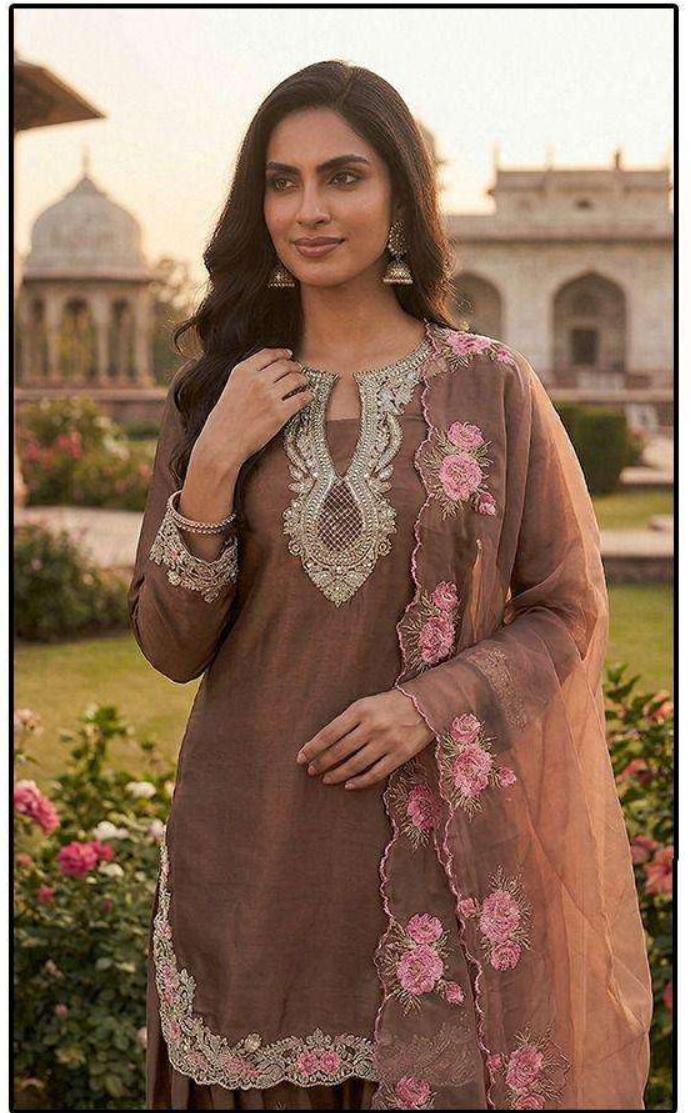






HF-786



*HF-786 I*

*Top :- Heavy Satin*

*Bottom :- Heavy Satin*

*Dupatta :- Heavy Satin*



**HOOR TEX**

**CARE INSTRUCTIONS**

DRY CLEAN RECOMMENDED

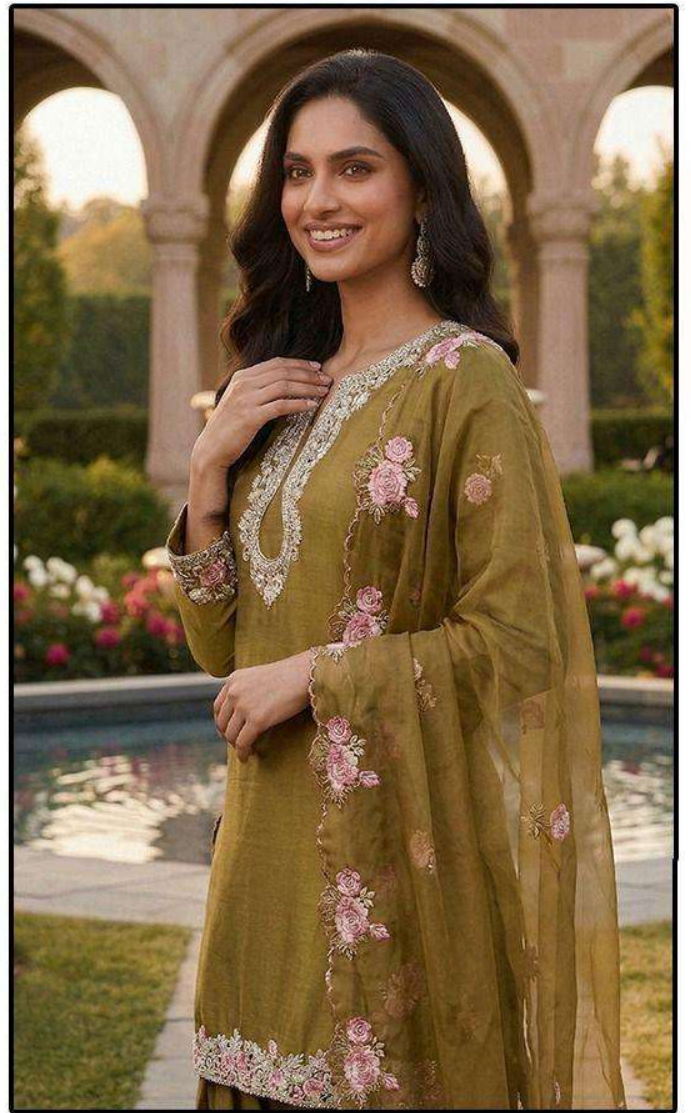
DO NOT USE ANY TYPE OF BLEACH OR STAIN REMOVING CHEMICALS

DO NOT OVER EXPOSE DAMP FABRIC TO STRONG SUNLIGHT

IRON AT MODERATE TEMPERATURE



HF-786



HF-786 G

Top :- Heavy Satin

Bottom :- Heavy Satin

Dupatta :- Heavy Satin



HOOR TEX

**CARE INSTRUCTIONS**

DRY CLEAN RECOMMENDED

DO NOT USE ANY TYPE OF BLEACH OR STAIN REMOVING CHEMICALS

DO NOT OVER EXPOSE DAMP FABRIC TO STRONG SUNLIGHT

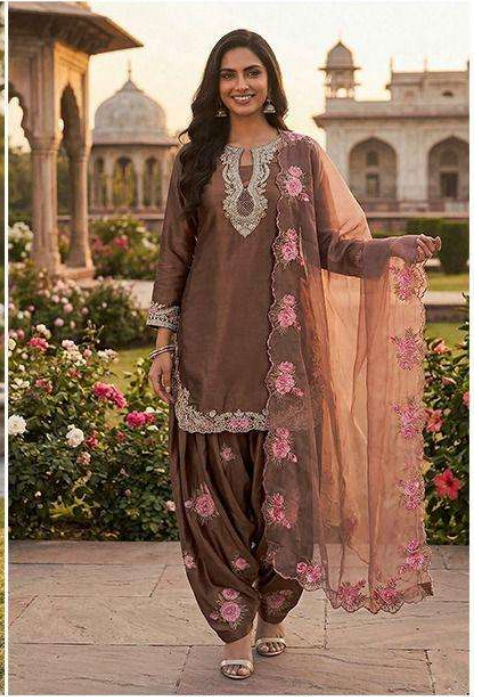
IRON AT MODERATE TEMPERATURE



HF-786 G



HF-786 H



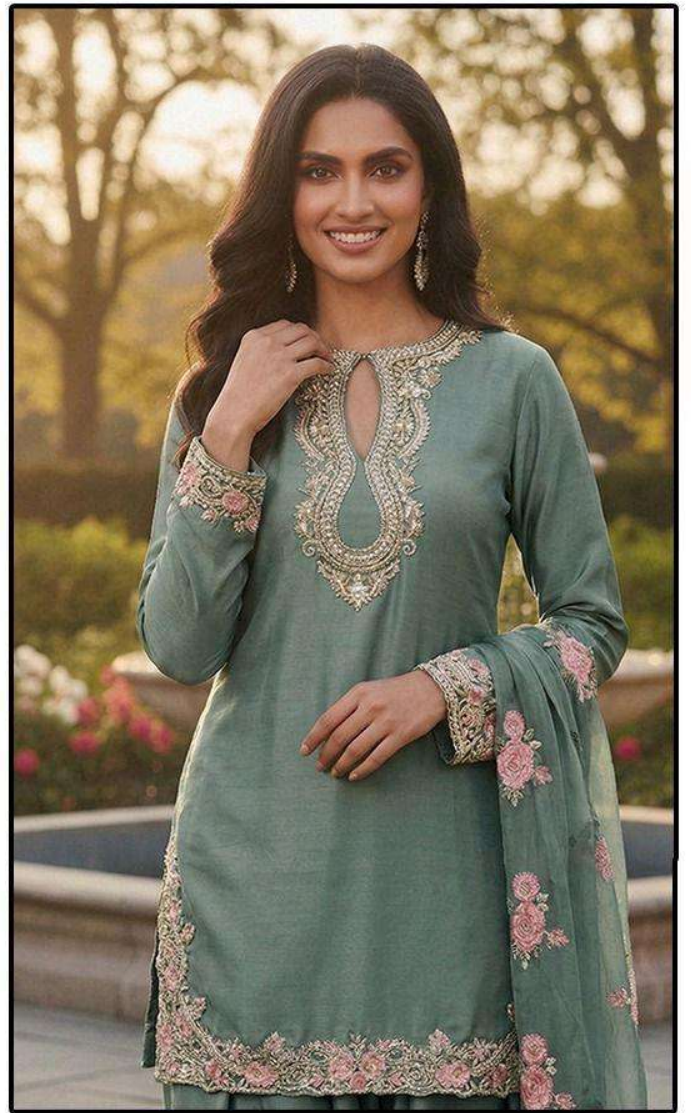
HF-786 I



HOOR TEX



HOOR TEX



*HF-786 H*

*Top :- Heavy Satin*

*Bottom :- Heavy Satin*

*Dupatta :- Heavy Satin*



**HOOR TEX**

**CARE INSTRUCTIONS**

DRY CLEAN RECOMMENDED

DO NOT USE ANY TYPE OF BLEACH OR STAIN REMOVING CHEMICALS

DO NOT OVER EXPOSE DAMP FABRIC TO STRONG SUNLIGHT

IRON AT MODERATE TEMPERATURE



HF-786