

A woman is modeling a traditional Indian outfit. The top is a long-sleeved kurta in a dark blue and green color palette, heavily embellished with intricate gold embroidery. A vertical maroon stripe runs down the center, featuring a large, ornate gold medallion. The bottom is a pair of maroon trousers. A matching dupatta with gold borders and floral motifs is draped over her left shoulder. She is wearing gold jewelry, including a necklace, earrings, and bangles. The background is a dark, marbled wall, and she is standing on a white, shaggy rug.

HT

HOOR TEX



H-418

Top :- Heavy Muslin
Bottom :- Heavy Muslin
Dupatta :- Muslin Printed

HT
HOOR TEX



H-418 B



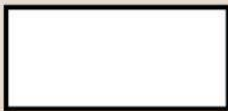
Top :- Heavy Muslin
Bottom :- Heavy Muslin
Dupatta :- Muslin Printed

HT

HOOR TEX



H-418 A





H-418 A



H-418 B



H-418 C



H-418 D



HOOR TEX



H-418



H-418



H-418

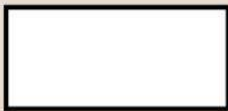
Top :- Heavy Muslin
Bottom :- Heavy Muslin
Dupatta :- Muslin Printed



HOOR TEX



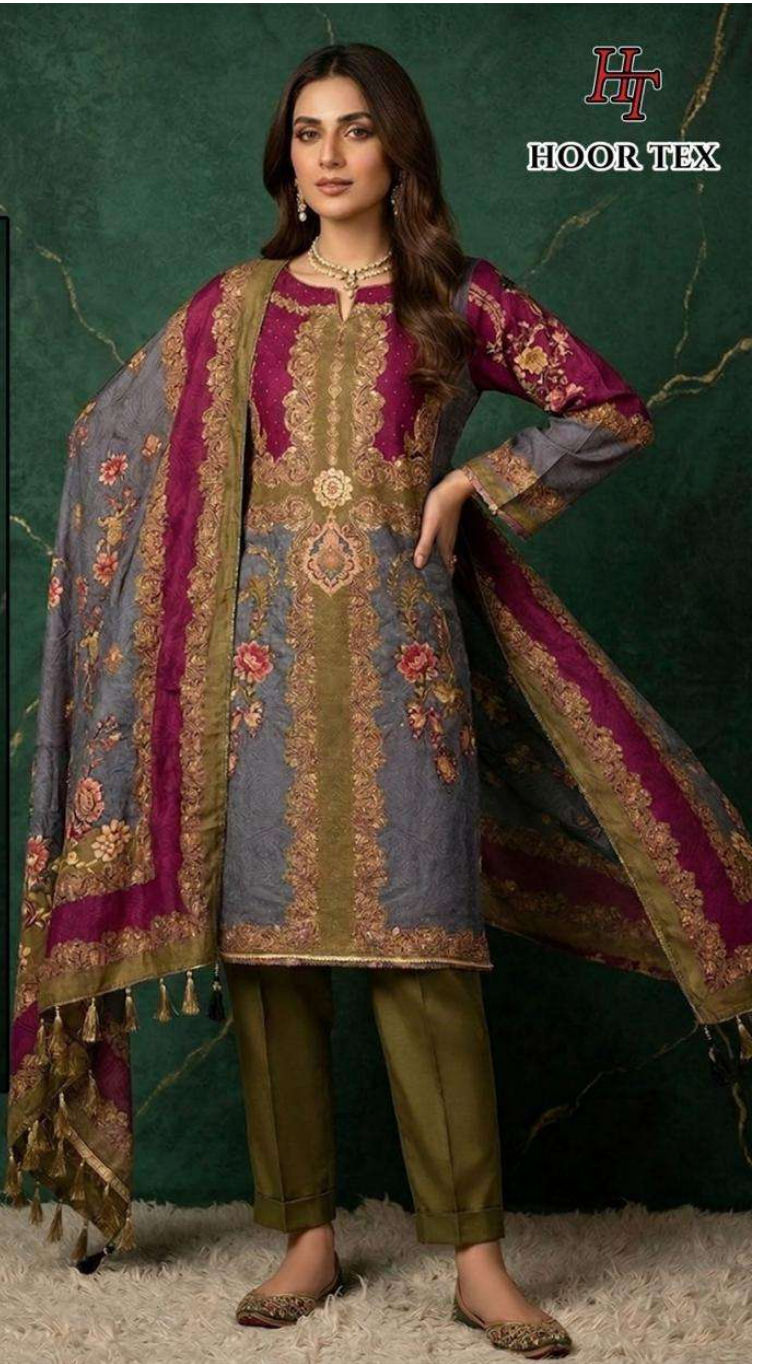
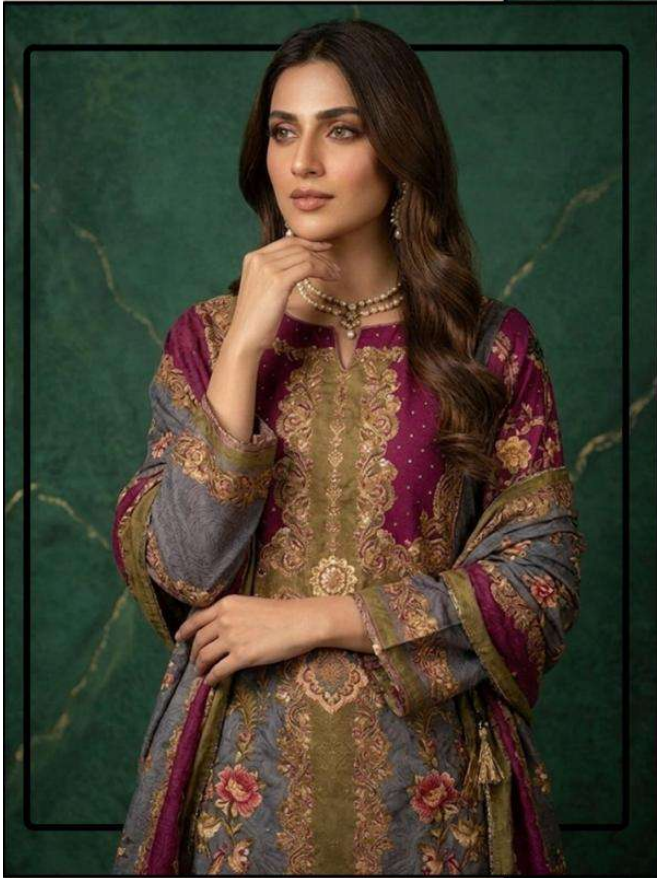
H-418 C



Top :- Heavy Muslin
Bottom :- Heavy Muslin
Dupatta :- Muslin Printed

HT

HOOR TEX



H-418 D

