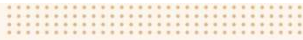


ANMOL™  
CREATIONS

# Exotique

VOLUME-07





ANMOL™  
CREATIONS

9406



Expression of a diva are truly engrossing  
her unique expression would carry  
attention in any celebration.



ANMOL™  
CREATIONS

9405



Classic to temporary, the contemporary designs with classy colors giving luxurious touch with finished heavy look.



ANMOL™  
CREATIONS

9414

*Anmol*<sup>®</sup>  
*Creation*

## BEE PEE TEXTILES

### EXOTIQUE - VII

<u>D.NO</u>	<u>FABRIC</u>	<u>BLOUSE</u>	<u>PRICE</u>
9401	SHIMMER GORGETTE	EMBRODERY	1735
9402	SHIMMER GORGETTE	EMBRODERY	1735
9403	SHIMMER GORGETTE	EMBRODERY	1735
9404	SHIMMER GORGETTE	EMBRODERY	1735
9405	SHIMMER GORGETTE	EMBRODERY	1735
9406	SHIMMER GORGETTE	EMBRODERY	1735
9407	SHIMMER GORGETTE	EMBRODERY	1735
9408	TWO TONE GORGETTE	EMBRODERY	1615
9409	SHIMMER GORGETTE	EMBRODERY	1735
9410	CHOCLATE CRAPE	EMBRODERY	1675
9411	SHIMMER GORGETTE	EMBRODERY	1735
9412	SHIMMER GORGETTE	EMBRODERY	1735
9413	SHIMMER GORGETTE	EMBRODERY	1735
9414	SHIMMER GORGETTE	EMBRODERY	1735
9415	SHIMMER GORGETTE	EMBRODERY	1735
		TOTAL AMOUNT	25845
		AVERAGE	1723



ANMOL™  
CREATIONS

9415



9401



9402



9403



9404



9409



9410



9411



9412



9405



9406



9407



9408



9413



9414



9415

ANMOL™  
CREATIONS  
Exotique  
VOLUME-07



ANMOL™  
CREATIONS

# Exotique

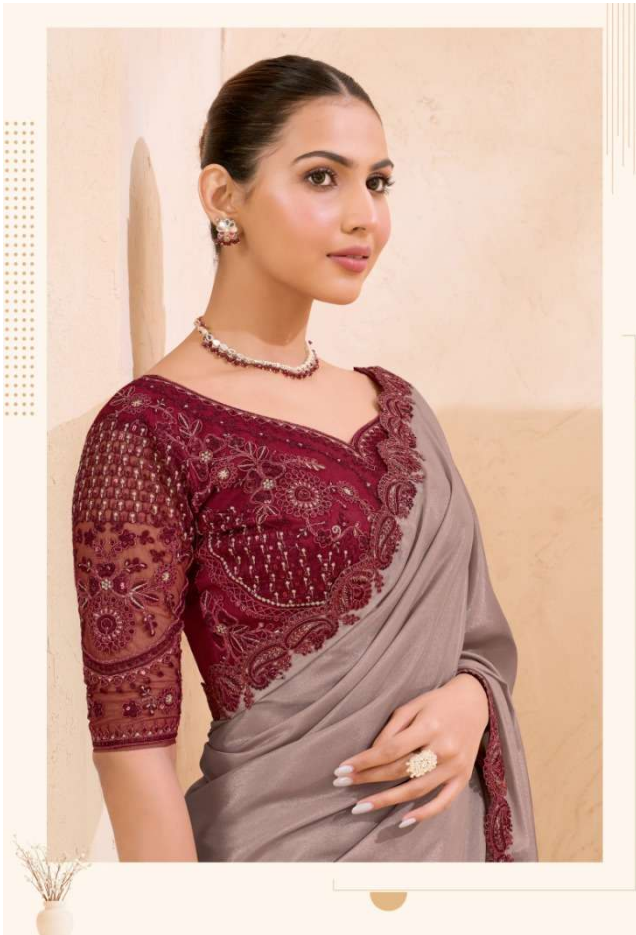
VOLUME-07





Showcasing excellent work and craftsmanship, each one of these piece will make for a class apart style in your wardrobe.











9412



ANMOL™  
CREATIONS



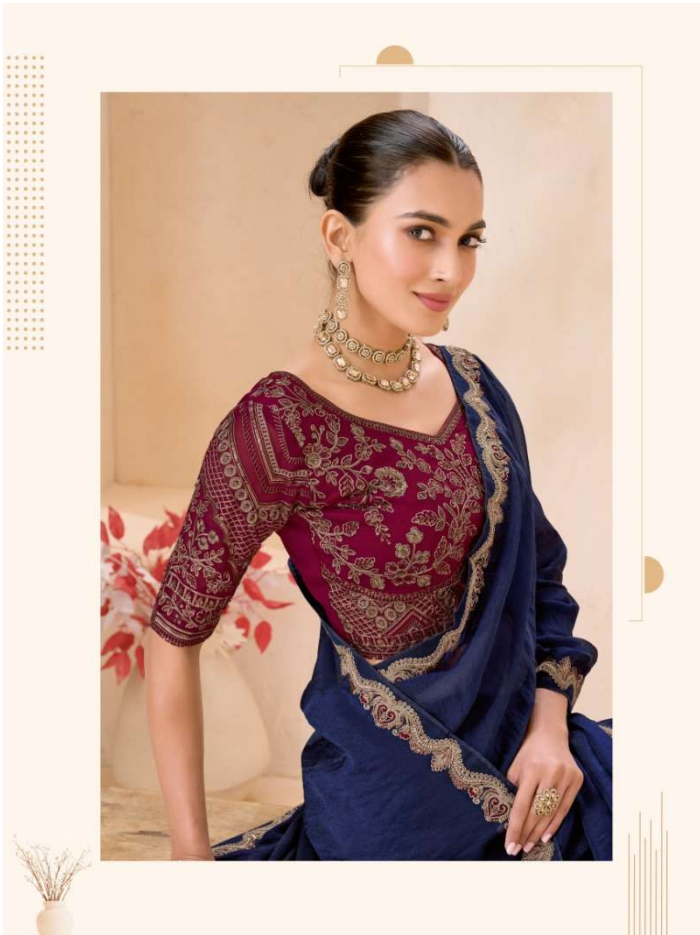
9413





Richly of beautifying create a trend with  
this soothing color and fascinating  
attire to enhance your beauty





ANMOL™  
CREATIONS

9407



ANMOL™  
CREATIONS



our lives are colored by the hues of rich emotions and experiences.  
we aim to capture the best of these sentiments with the  
colors of happiness, vibrant, vivid and boldly catch,  
this range of ethnic wear makes sure it spreads





Make everyday fashionable everything you need for fabulous wardrobe a sound up of the latest this season

9403