

A woman is standing in a courtyard, wearing a long, pink, embroidered tunic with a matching shawl. The tunic features a central vertical panel with diamond-shaped motifs in gold, red, and green. The shawl has a wide, colorful border with stripes of orange, red, and black. She is also wearing pink trousers and gold jewelry, including a necklace, earrings, and bangles. The background shows a traditional building with arches and a fountain.

HT

HOOR TEX



H-417



H-417

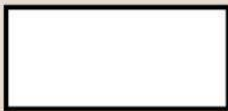
Top :- Heavy Muslin
Bottom :- Heavy Muslin
Dupatta :- Muslin Printed



HOOR TEX



H-417 C



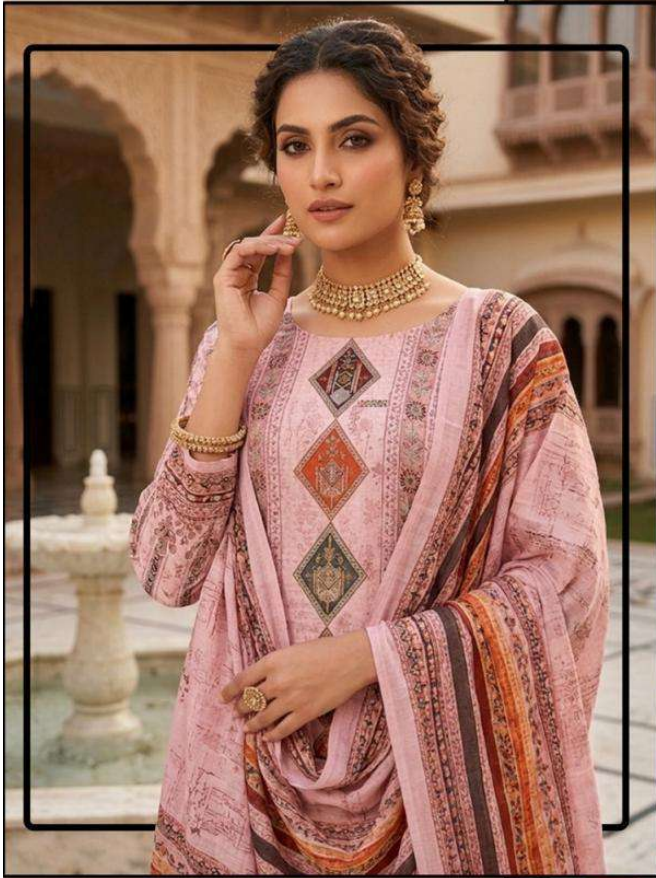


H-417

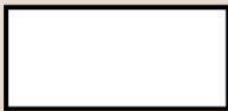
Top :- Heavy Muslin
Bottom :- Heavy Muslin
Dupatta :- Muslin Printed



HOOR TEX



H-417 A



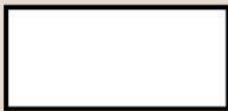
Top :- Heavy Muslin
Bottom :- Heavy Muslin
Dupatta :- Muslin Printed



HOOR TEX



H-417 D



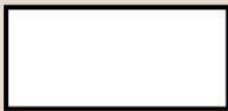
Top :- Heavy Muslin
Bottom :- Heavy Muslin
Dupatta :- Muslin Printed



HOOR TEX

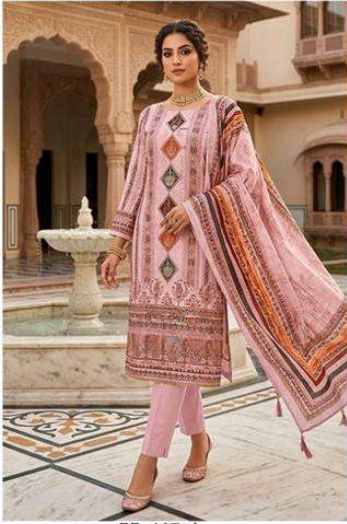


H-417 B





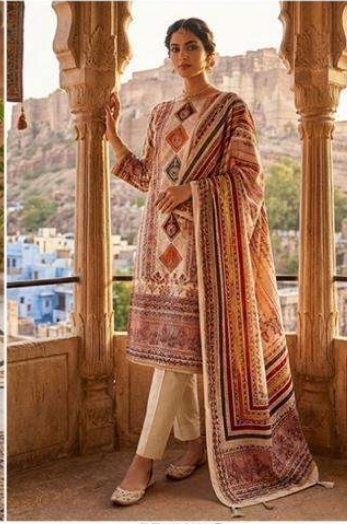
H-417



H-417 A



H-417 B



H-417 C



H-417 D



HOOR TEX