

HEER

MOHABBAT

MOHABBAT

TOP

PURE MUSELIN WITH DIGITAL PRINT AND DORI EMBROIDERY ON NECKLINE, ORGANZA SCALLOPED DORI EMBROIDERY ON SLEEVE AND HEMLINE

BOTTOM

PURE MUSELIN WITH ORGANZA SCALLOPED DORI EMBROIDERY

DUPATTA

PURE CHINON WITH DIGITAL PRINT AND ORGANZA SCALLOPED DORI EMBROIDERY BORDER

HEER
BY LINDA





0446 | Model: 170cm / 5'7" / 55kg. Dress: 100% Cotton. Shawl: 100% Cotton. Fabric: 100% Cotton. Color: Light Green. Size: S. Price: \$120.00. Available in sizes S, M, L, XL. Contact: 011-26101234. Website: www.hook.com

HEER



3444 *Embroidered light blue dress with matching shawl*





HEER

A beautiful collection of dresses, a blend of style and elegance, with a touch of luxury.

9444

HEER

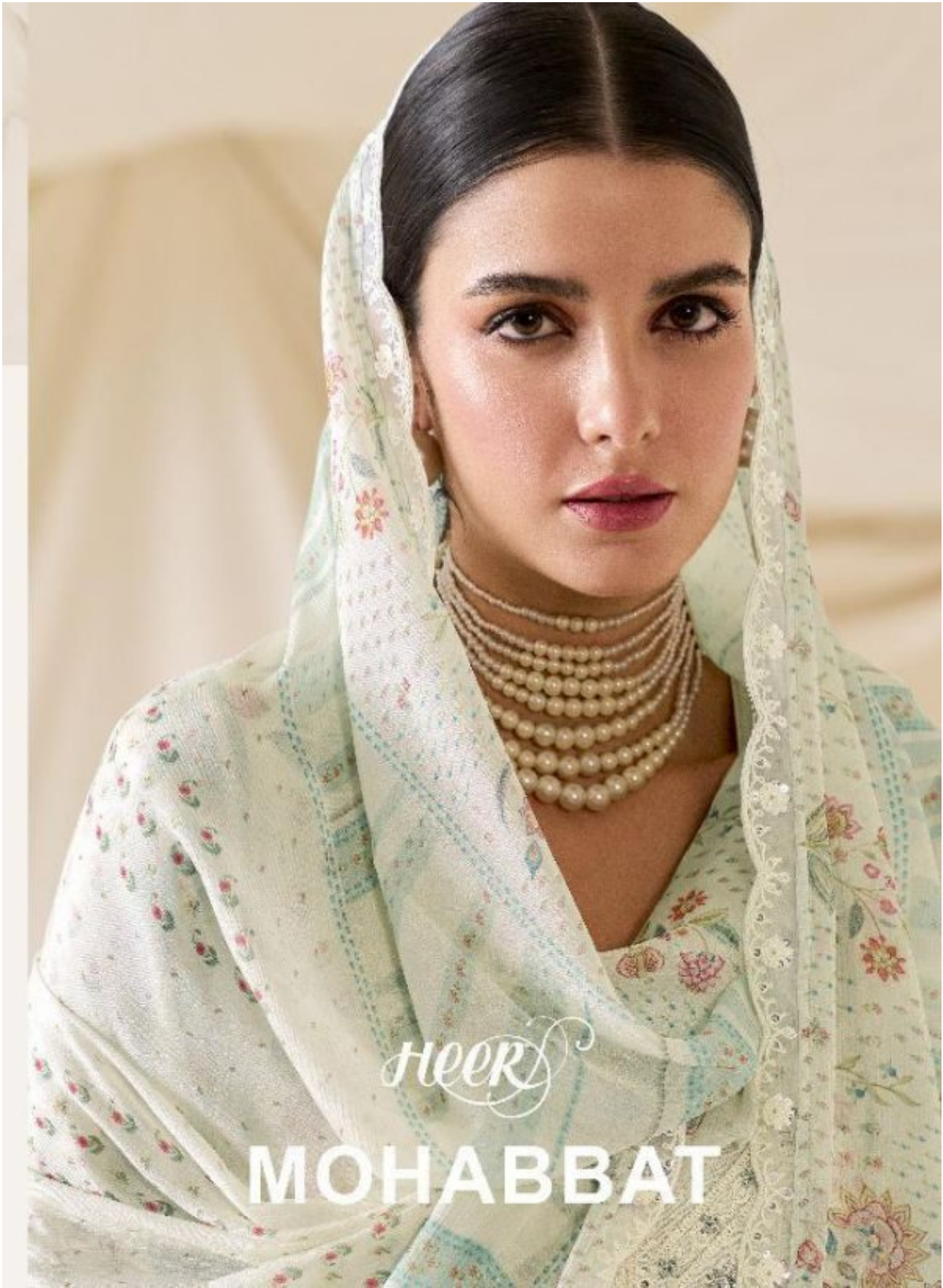


HEER 9445



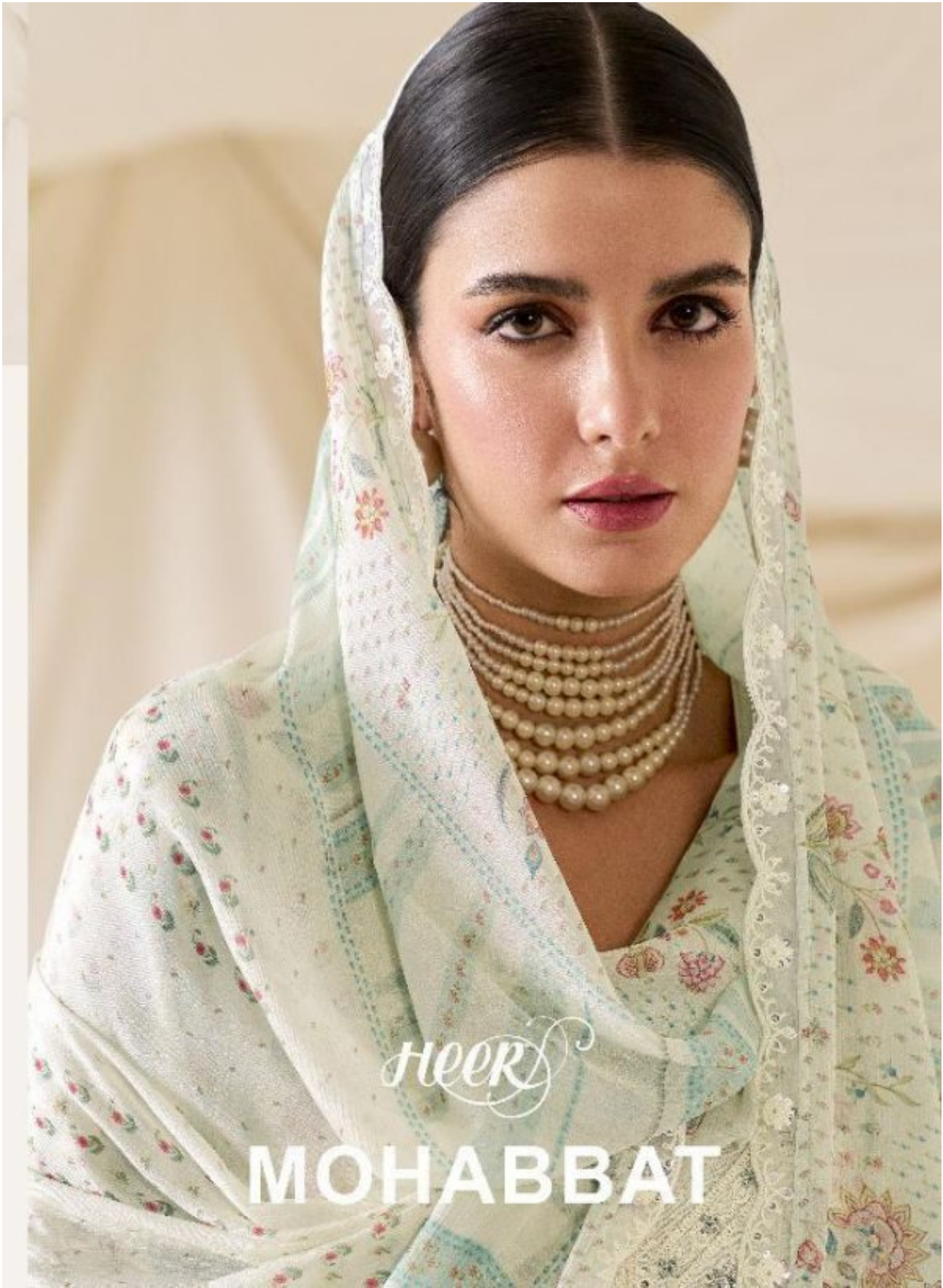


كافتان بلون أزرق فاتح مزينة بالخرز والبرص
اللون الأزرق الفاتح
8442



HEER

MOHABBAT



Heer's

MOHABBAT





HEER

www.heer.com | 9441





HEER

9441 | *The New Line for Wedding and Occasion Wear*
with the best of fabrics

MOHABBAT

TOP

PURE MUSLIN WITH DIGITAL PRINT AND DORI EMBROIDERY ON NECKLINE, ORGANZA SCALLOPED DORI EMBROIDERY ON SLEEVE AND HEMLINE

BOTTOM

PURE MUSLIN WITH ORGANZA SCALLOPED DORI EMBROIDERY

DUPATTA

PURE CHINON WITH DIGITAL PRINT AND ORGANZA SCALLOPED DORI EMBROIDERY BORDER

HEER
BY FARAZ





*HEER*TM

www.heer.com | 9443

HEER



9441

9442

9443

MOHABBAT



9444

9445

9446