





HF-228



HF-228



HF-228 C

Top :- Cristal Viscous

Bottom :- Cristal Viscous

Dupatta :- Heavy Organza



HOOR TEX

CARE INSTRUCTIONS

DRY CLEAN RECOMMENDED

DO NOT USE ANY TYPE OF BLEACH OR STAIN REMOVING CHEMICALS

DO NOT OVER EXPOSE DAMP FABRIC TO STRONG SUNLIGHT

IRON AT MODERATE TEMPERATURE



HF-228 B

Top :- Cristal Viscous

Bottom :- Cristal Viscous

Dupatta :- Heavy Organza



HOOR TEX

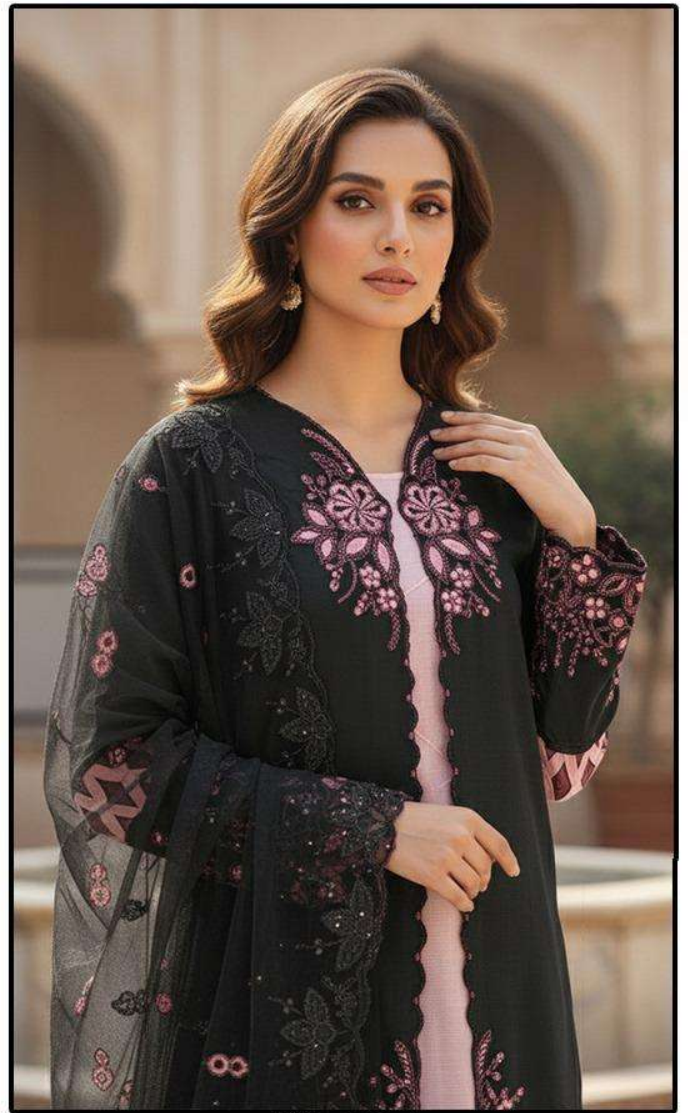
CARE INSTRUCTIONS

DRY CLEAN RECOMMENDED

DO NOT USE ANY TYPE OF BLEACH OR STAIN REMOVING CHEMICALS

DO NOT OVER EXPOSE DAMP FABRIC TO STRONG SUNLIGHT

IRON AT MODERATE TEMPERATURE



HF-228 A

Top :- Cristal Viscous

Bottom :- Cristal Viscous

Dupatta :- Heavy Organza



HOOR TEX

CARE INSTRUCTIONS

DRY CLEAN RECOMMENDED

DO NOT USE ANY TYPE OF BLEACH OR STAIN REMOVING CHEMICALS

DO NOT OVER EXPOSE DAMP FABRIC TO STRONG SUNLIGHT

IRON AT MODERATE TEMPERATURE



HF-228



HF-228 A



HF-228 B



HF-228 C



HOOR TEX



HOOR TEX



HOOR TEX

