



SAYURI[®]
Designer

HASEENA

SAYURI®
Designer



STYLISH EVERYDAY





SAYURI®
Designer



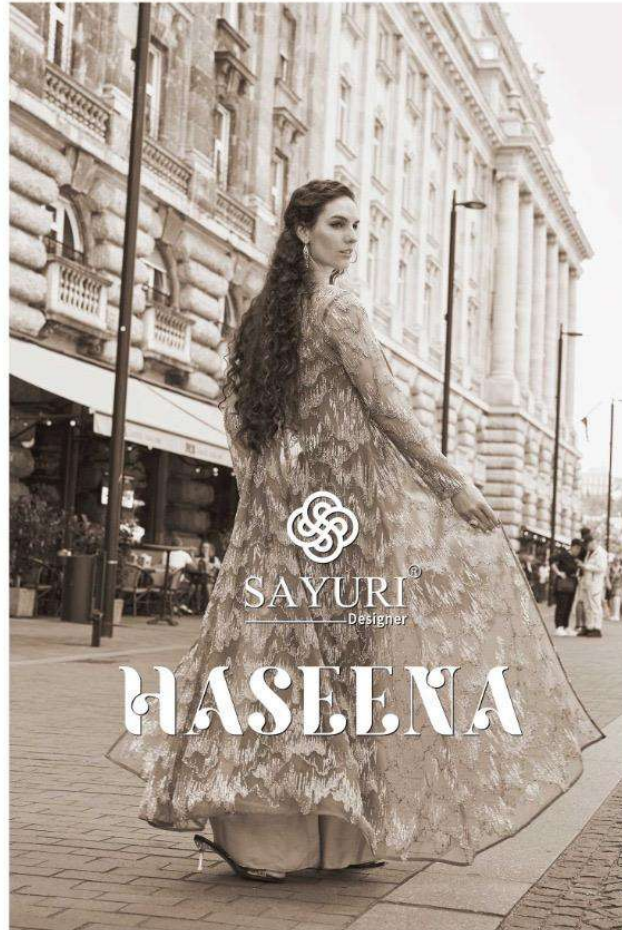
STYLISH EVERYDAY



Style gives the first impression of your personality, so enhance it with hasena.

10134

Presenting the fascinating print edition haseena.



Combined with western notion of cut, concept and finish and using Indian artistry, Sadhana Fashion has evolved as a fusion of textile detail and meticulous designing. The finest fabrics, spectacular prints and tassel details make this collection charismatic. Hayat is precisely crafted for the women who admire to look stylish with routine wear; cherish the Indian essence with Sadhana Fashion's new edition Hayat.

SAYURI[®]
Designer





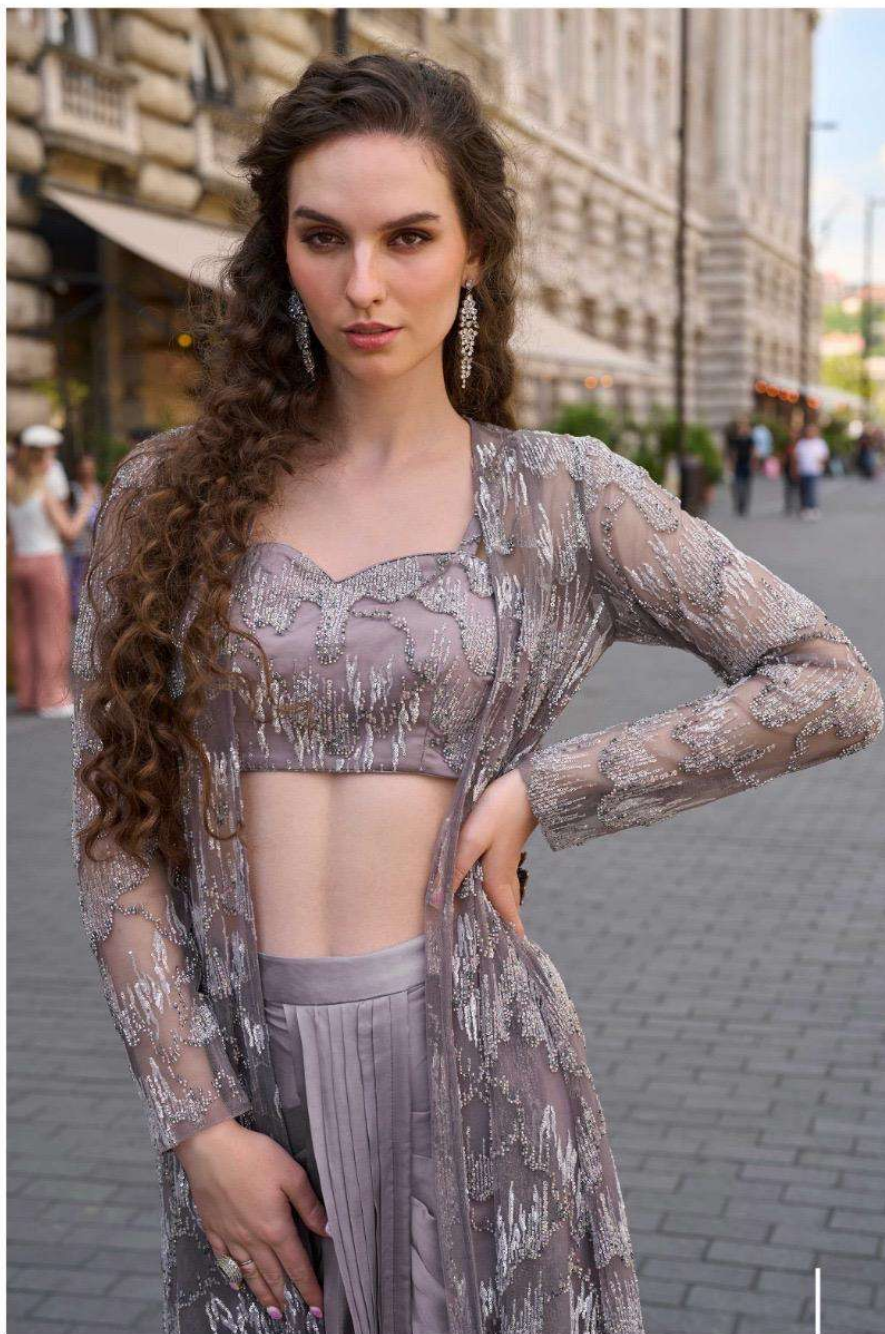
Style gives the first impression of your personality,
so enhance it with haseena.

10133









Style gives the first impression of your personality, so enhance it with haseena. 10133



10134 | Style gives the first impression of your personality, so enhance it with haseena.



Style gives the first impression of your personality,
so enhance it with hasena.

10132



