



**25923**

FABRIC : SHIMMER CHIFFON

BLOUSE : HAND WORK READY TO WEAR



**25911**

SAREE STYLE: ONE MINUTE SAREE

FABRIC: SOFT SATIN SILK

WORK STYLE: BEADS EMBELLISHED WITH STONE AND APPLIQUÉ HANDWORK

COMPLIMENTARY ACCESSORIES: BLOUSE, BELT





**25923**

FABRIC : SHIMMER CHIFFON

BLOUSE : HAND WORK READY TO WEAR









25907

SAREE STYLE: ONE MINUTE SAREE

FABRIC: SOFT SATIN SILK

WORK STYLE: SEQUIN EMBROIDERY, STONE AND PEARL HANDWORK WITH APPLIQUÉ WORK

COMPLIMENTARY ACCESSORIES: BLOUSE, BELT





**25913**

SAREE STYLE: ONE MINUTE SAREE

FABRIC: SOFT SATIN SILK

WORK STYLE: SEQUINS EMBROIDERY WITH STONE AND APPLIQUE HANDWORK

COMPLIMENTARY ACCESSORIES: BLOUSE, JACKET, BELT





**25915**

SAREE STYLE: ONE MINUTE SAREE

FABRIC: SOFT SATIN SILK

WORK STYLE: DUAL SEQUINS EMBROIDERY WITH STONE HANDWORK

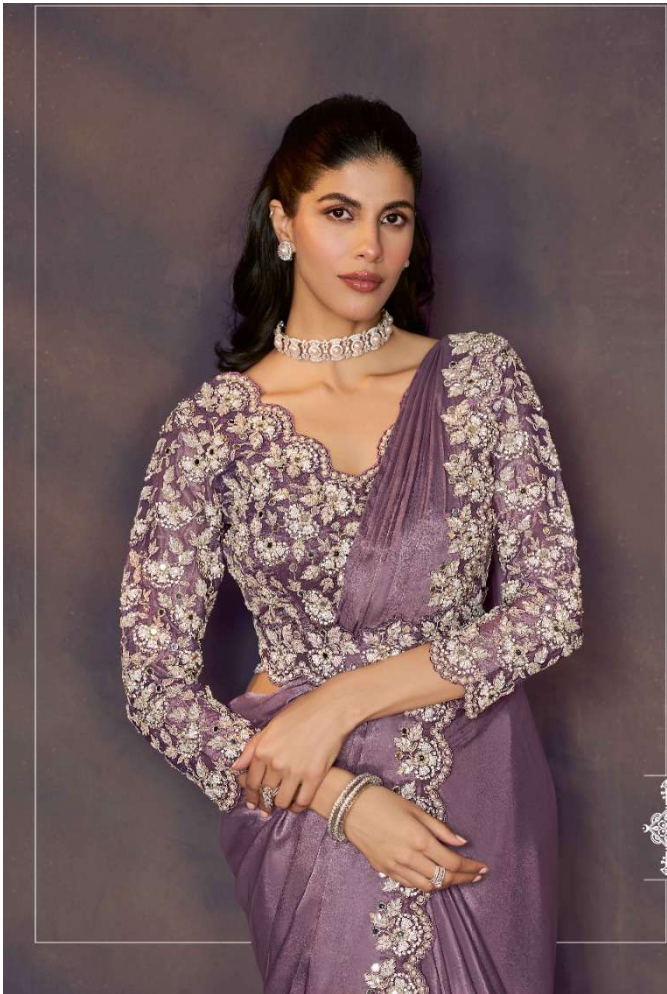
COMPLIMENTARY ACCESSORIES: BLOUSE, JACKET, BELT

DESIGN NO	SAREE FABRIC	BLOUSE FABRIC	WORK	Accessories	Belt	SAREE TYPE	CUSTZ.(SEMISTITCH/UN-STITCH)	BLOUSE SIZE
25907	Two Tone Satin Silk	Two Tone Satin Silk	Sequins Embroidery, Pearl, Stone Embellishment	Blouse, Cape, Belt	Available	Ready to wear	Stitched Blouse	up to 38 Inch with margin of 42 inch
25909	Crush Satin Silk	Tissue Silk	Sequins, Dual Beads Embellishment	Blouse, Belt	Available	Ready to wear	Stitched Blouse	up to 38 Inch with margin of 42 inch
25911	Two Tone Satin Silk	Tissue Silk	Beads Embellished, Stone, Applique Work	Blouse, Belt	Available	Ready to wear	Stitched Blouse	up to 38 Inch with margin of 42 inch
25912	Soft Satin Silk	Two Tone Satin Silk	Mirror, Stone, Handwork, Scallop Embroidery	Blouse, Jacket, Belt	Available	Ready to wear	Stitched Blouse	up to 38 Inch with margin of 42 inch
25913	Soft Satin Silk	Soft Satin Silk	Sequins Embroidery, Stone, Applique Handwork	Blouse, Jacket, Belt	Available	Ready to wear	Stitched Blouse	up to 38 Inch with margin of 42 inch
25915	Soft Satin Silk	Soft Satin Silk	Dual Sequins Embroidery, Pearl, Stone Handwork	Blouse, Jacket, Belt	Available	Ready to wear	Stitched Blouse	up to 38 Inch with margin of 42 inch
25918	Soft Satin Silk	Tissue Silk	Scallop Sequins Embroidery, Multi Stone Embellishment	Blouse, Belt	Available	Ready to wear	Stitched Blouse	up to 38 Inch with margin of 42 inch
25923	Shimmer Chiffon	Malai Satin	Pure Handwork, Khatli Work	Blouse, Belt	Available	Ready to wear	Stitched Blouse	up to 38 Inch with margin of 42 inch









**25918**

SAREE STYLE: ONE MINUTE SAREE

FABRIC: SOFT SATIN SILK

WORK STYLE: SEQUINS SCALLOP EMBROIDERY WITH STONE HANDWORK

COMPLIMENTARY ACCESSORIES: BLOUSE, BELT