



Anvika Light Edition







S I M P L I C I T Y

"Don't be into trends. Don't make fashion own you, but you decide what you are, what you want to express by the way you saree and the way to live."



P A S S I O N



"Don't be into trends. Don't make fashion own you, but you decide what you are, what you want to express by the way you saree and the way to live."

A woman with long, wavy brown hair is standing against a warm, orange-toned background. She is wearing a gold-colored saree with a wide purple border and a matching purple blouse. The saree has a subtle sheen and a small white border along the edge. She is also wearing large, ornate gold earrings and a bracelet. The overall look is elegant and traditional.

Rajpath™

Tissue Silk

561

Rajpath™
The Way Of Style
Tissue Silk



S I M P L I C I T Y

"Don't be into trends. Don't make fashion own you, but you decide what you are, what you want to express by the way you saree and the way to live."







G R A C E F U L



"Don't be into trends. Don't make fashion own you, but you decide what you are, what you want to express by the way you saree and the way to live."

U N I Q U E D E S I G N

"Don't be into trends. Don't make fashion own you, but you decide what you are, what you want to express by the way you saree and the way to live."





Rajpath™
The Way Of Style
Tissue Silk



P A S S I O N

"Don't be into trends. Don't make fashion own you, but you decide what you are, what you want to express by the way you dress and the way to live."



RajpathTM

Tissue Silk

562



Rajpath™

Tissue Silk

563



RajpathTM
The Way Of Style

Tissue Silk

560



Rajpath™
The Way Of Style
Tissue Silk



E L E G A N C E

"Don't be into trends. Don't make fashion own you, but you decide what you are, what you want to express by the way you dress and the way to live."

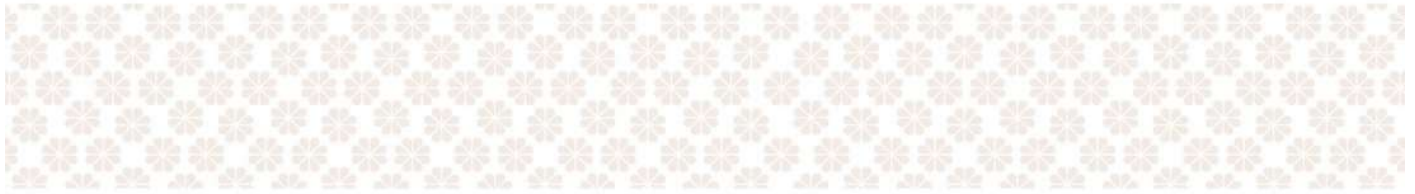




— I N N O V A T I V E —



"Don't be into trends. Don't make fashion own you, but you decide what you are, what you want to express by the way you saree and the way to live."



**Rajpath**TM
The Way Of Style
Tissue Silk

GLAMOUR

"Don't be into trends. Don't make fashion own you, but you decide what you are, what you want to express by the way you dress and the way to live."





RajpathTM
The Way Of Style

Tissue Silk

564





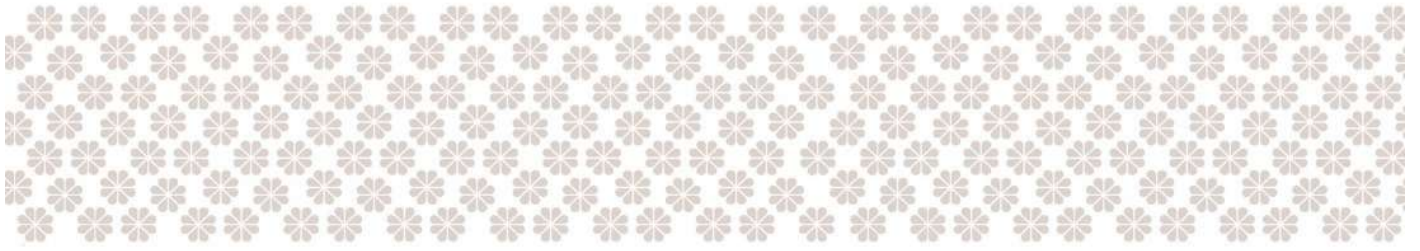
Tissue Silk

F A S H I O N

"Don't be into trends. Don't make fashion own you, but you decide what you are, what you want to express by the way you saree and the way to live."







E T H N I C D E S I G N



"Don't be into trends. Don't make fashion own you, but you decide what you are, what you want to express by the way you saree and the way to live."



RajpathTM
The Way Of Style

Tissue Silk

565







RajpathTM
The Way Of Style

Tissue Silk



B E A U T Y

"Don't be into trends. Don't make fashion own you, but you decide what you are, what you want to express by the way you saree and the way to live."







560




561



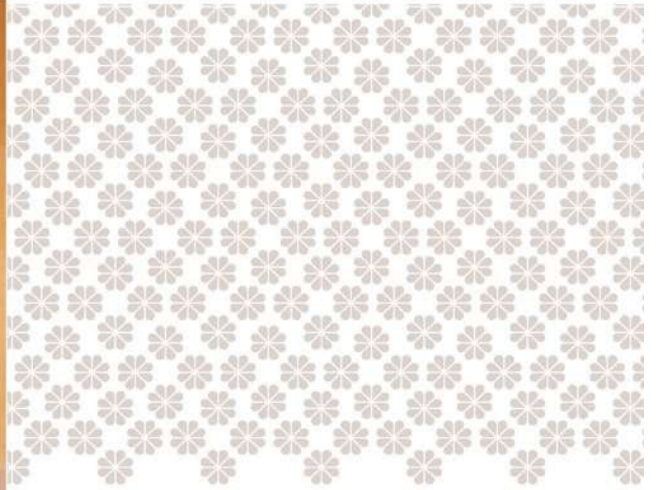

563




564



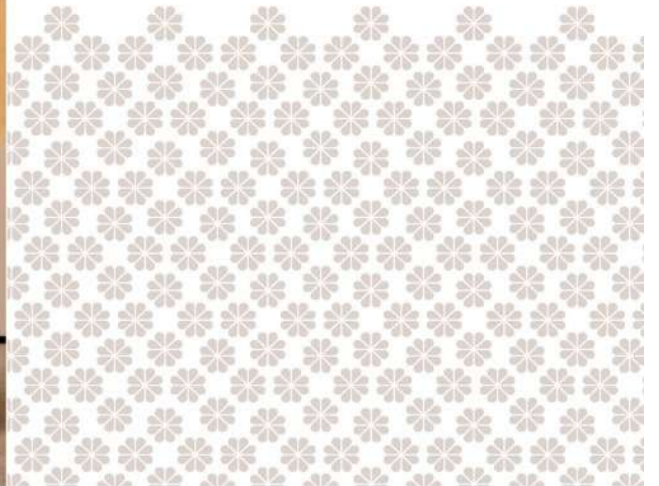

562


Rajpath™
The Way Of Style
Tissue Silk



565



Anvika Light Edition

