

Design NO. (SKU)	Color	Lehenga Fabric	Choli Fabric	Dupatta Fabric	SIZE (Full Stitched) (M-38 SIZE) With Customise upto 44 INCH	Lehenga Flair	Lehenga Work	Choli Work	Dupatta Work	Weight (KG)
11031	Maroon	Organic Cotton	Organic Cotton	Organic Cotton	Choli Chest: 38 INCH Choli Length: 15 INCH Lehenga Waist: 42 INCH Lehenga Length: 40 INCH Dupatta Length: 2.30 MTR	7 MTR	All Over Print with Aari and Foil Work	Print with Jacquard Patch and Embroidered Lace Border on Sleeve	All Over Print with Aari and Foil Work	2
11032	Black	Organic Cotton	Organic Cotton	Organic Cotton	Choli Chest: 38 INCH Choli Length: 15 INCH Lehenga Waist: 42 INCH Lehenga Length: 40 INCH Dupatta Length: 2.30 MTR	7 MTR	All Over Print with Aari and Foil Work	Print with Jacquard Patch and Embroidered Lace Border on Sleeve	All Over Print with Aari and Foil Work	2
11033	Multi Color	Organic Cotton	Organic Cotton	Organic Cotton	Choli Chest: 38 INCH Choli Length: 15 INCH Lehenga Waist: 42 INCH Lehenga Length: 40 INCH Dupatta Length: 2.30 MTR	7 MTR	All Over Print with Aari and Foil Work	Print with Jacquard Patch and Embroidered Lace Border on Sleeve	All Over Print with Aari and Foil Work	2
11034	Multi Color	Organic Cotton	Organic Cotton	Organic Cotton	Choli Chest: 38 INCH Choli Length: 15 INCH Lehenga Waist: 42 INCH Lehenga Length: 40 INCH Dupatta Length: 2.30 MTR	7 MTR	All Over Print with Aari and Foil Work	Print with Jacquard Patch and Embroidered Lace Border on Sleeve	All Over Print with Aari and Foil Work	2

THIS BOOK / CATALOGUE / LOGO / ARE PROTECTED UNDER COPYRIGHT ACT.
AN INLEGAL/UNAUTHORIZED REPRINT, PUBLISHING, REPRODUCTION, DISTRIBUTION AND MODIFICATION OF ANY IMAGES, PHOTOGRAPHS AND PRODUTCS, TOTALLY OR IN PART, FOR ANY PURPOSE, REASON OR CAUSE IS STRICTLY PROHIBITED AND PUNISHABLE UNDER LAW.

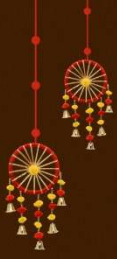


श्रीbhkala



RASS - 11031

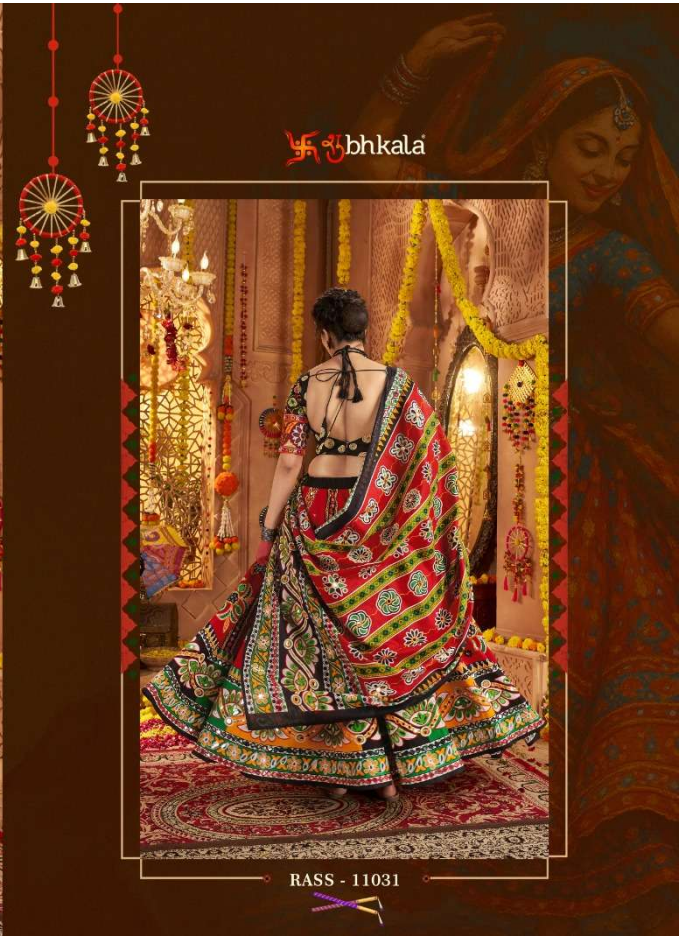




❧ bhkala

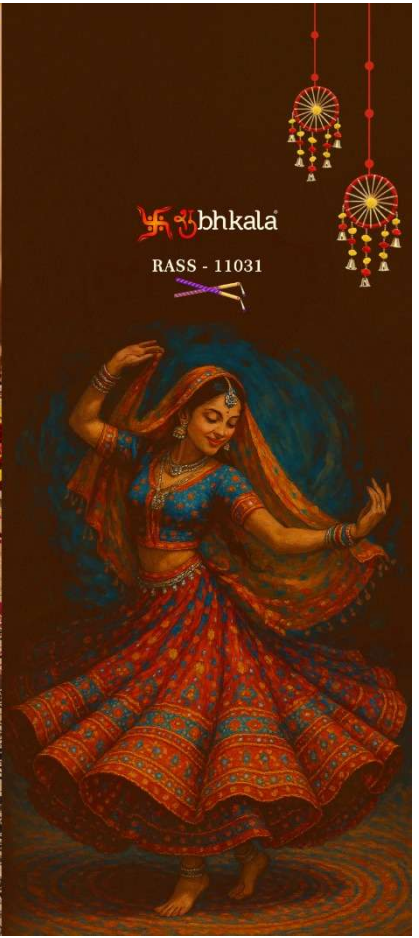
RASS - 11032













RASS - 11031



RASS - 11032



RASS - 11033



RASS - 11034





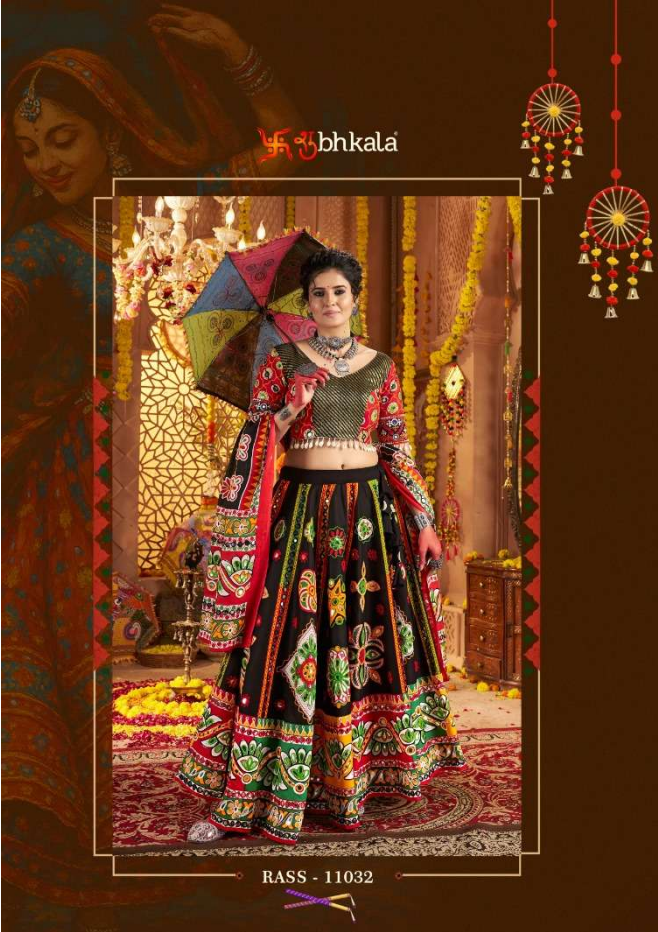
RASS - 11032



bhkala

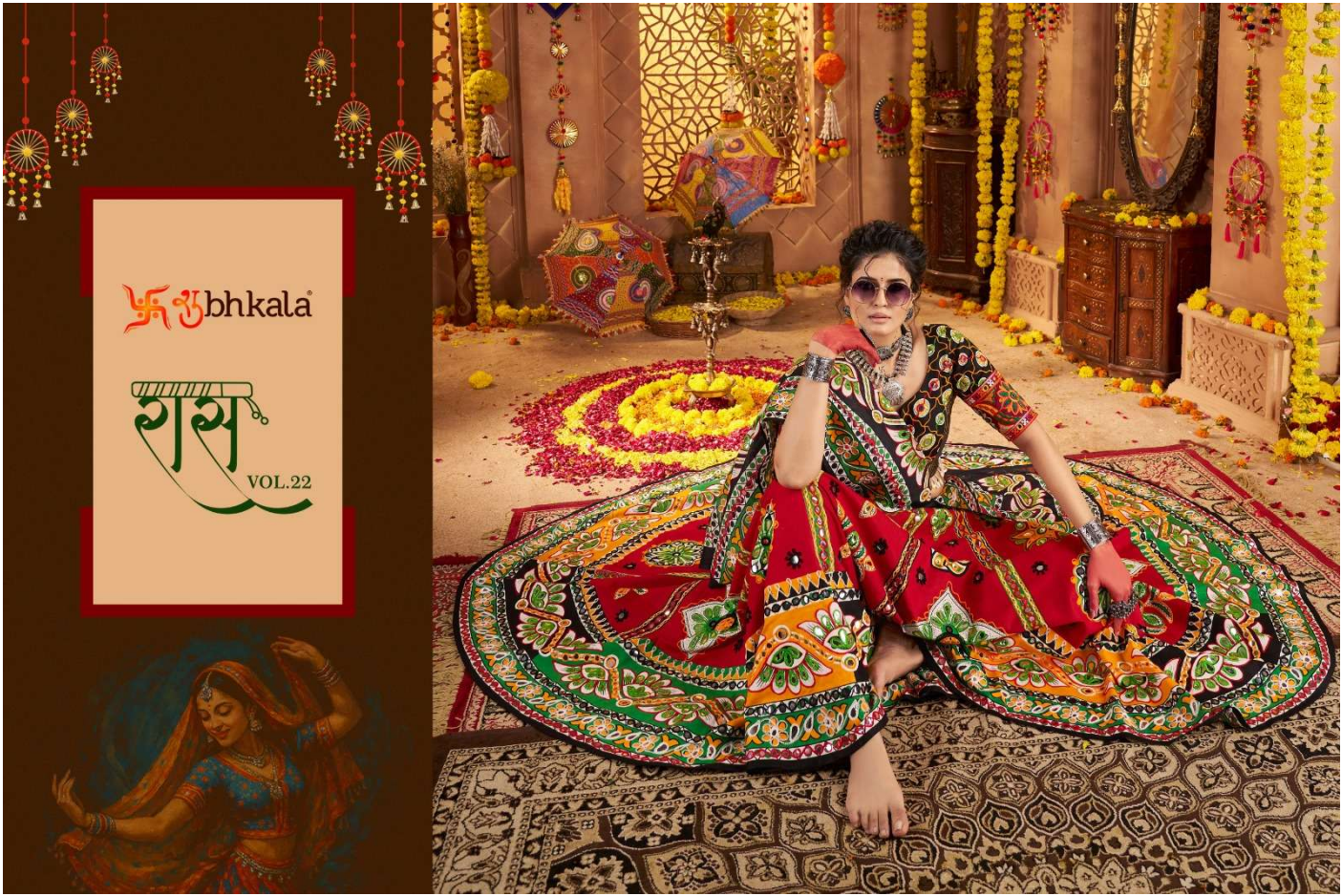


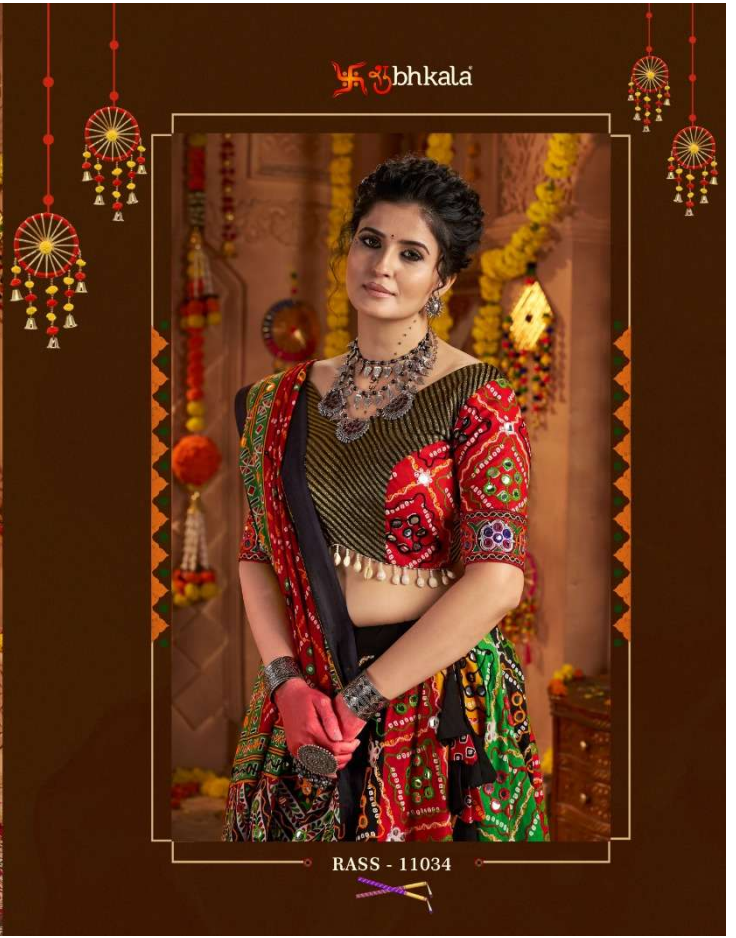




RASS - 11032









bhkala

RASS - 11033

