



KIMORA'S
Sohni

CORA

From subtle sophistication to bold brilliance,
our festive dresses promise style, comfort, and elegance in every celebration.

KIMORA'S
Sohrai

383

GLAMOUR

for every celebration





●● *celebrate in radiant "style"*

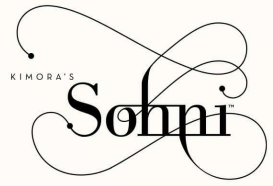
Celebrate every occasion with grace and glamour in our festive
dress collection, designed to light up your moments.

381
~~~~~

KIMORA'S  
*Sohni*

Celebration Couture **COLLECTION**





*beautifully made for celebrations* ●●

Fashion meets festivity in outfits that bring together vibrant spirit,  
graceful drapes, and striking festive flair.





381



●● *beautifully made for celebrations* ●●

Fashion meets festivity in outfits that bring together vibrant spirit, graceful  
drapes, and striking festive flair.

383



KIMORA'S  
**Sohmi**





KIMORA'S  
Sohni

CORA

Drape festive **ELEGANCE**





Feel festive, look fabu lou  
seach dress is designed to  
make your style shine with  
heritage and modern day  
glam combined in harmony.





●● *radiate confidence and charm*

Step into elegance with vibrant hues, flowing silhouettes, and traditional touches crafted for unforgettable festive celebrations.





Beautifully made for **CELEBRATIONS**



KIMORA'S  
**Sohni**







Unveil your unique sparkle  
with outfits that bring color,  
life, and celebration to every  
step you take this season.



KIMORA'S  
**Sohrai**

From dazzling embroidery to  
flowing fabrics, our dresses  
are crafted for unforgettable  
memories and unmatched  
festive fashion that makes  
hearts turn.

384





●● *Joyful dressing moments*

Be the essence of celebration in our beautiful festive collection,  
where every thread is woven with tradition, beauty, and joy.

KIMORA'S  
**Sohrai**

384



● ● **embrace vibrant tradition**

Our collection celebrates you bold, beautiful, and radiant in dresses designed for joyful, memorable festive occasions.









~ 381 ~



~ 382 ~



~ 383 ~



~ 384 ~



# CORA

## TOP

TOP PURE MUSLIN DIGITAL PRINT ,  
RESHAM BUTTI FRONT ,  
SCALLOPED RESHAM EMBROIDERY ORGANZA  
APPLIQUED BORDER HEMLINE AND SLEEVE

## DUPATTA

PURE CHINNON WITH DIGITAL PRINT AND  
FOUR HAND CRAFTED TASSELS

## BOTTOM

PURE MUSLIN HEAVY

**kimora®**

