



**24908C**

FABRIC : TWO TONE SATIN SILK  
BLOUSE : HAND WORK READY TO WEAR



24915

FABRIC : TWO TONE SATIN SILK  
BLOUSE : HAND WORK READY TO WEAR

DESIGN NO	SAREE FABRIC	BLOUSE FABRIC	WORK	Poncho & Jacket	Belt	SAREE TYPE	CUSTZ.(SEMISTITCH/UN-STITCH)	BLOUSE SIZE
24903	Two tone satin silk	Tissue	Pure Handwork/ Khatli Work	Jacket Available	Available	Ready to wear	Stitched Blouse	up to 38 Inch with margin of 42 inch
24904	Two tone satin silk	Tissue	Pure Handwork/ Khatli Work	NA	Available	Ready to wear	Stitched Blouse	up to 38 Inch with margin of 42 inch
24905	Crepe satin silk	Tissue	Pure Handwork/ Khatli Work	NA	Available	Ready to wear	Stitched Blouse	up to 38 Inch with margin of 42 inch
24906	Two tone satin silk	Malai Satin	Pure Handwork/ Khatli Work	Poncho Available	Available	Ready to wear	Stitched Blouse	up to 38 Inch with margin of 42 inch
24907	Two tone satin silk	Heavy Mono Net	Pure Handwork/ Khatli Work	NA	Available	Ready to wear	Stitched Blouse	up to 38 Inch with margin of 42 inch
24908	Two tone satin silk	Tissue	Pure Handwork/ Khatli Work	NA	Available	Ready to wear	Stitched Blouse	up to 38 Inch with margin of 42 inch
24908-C	Two tone satin silk	Tissue	Pure Handwork/ Khatli Work	NA	Available	Ready to wear	Stitched Blouse	up to 38 Inch with margin of 42 inch
24910	Two tone satin silk	Tissue	Pure Handwork/ Khatli Work	NA	Available	Ready to wear	Stitched Blouse	up to 38 Inch with margin of 42 inch
24911	Shimmer Chiffon	Malai Satin	Pure Handwork/ Khatli Work	NA	NA	Ready to wear	Stitched Blouse	up to 38 Inch with margin of 42 inch
24912	Crepe satin silk	Malai Satin	Pure Handwork/ Khatli Work	NA	Available	Ready to wear	Stitched Blouse	up to 38 Inch with margin of 42 inch
24913	Two tone satin silk	Tissue	Pure Handwork/ Khatli Work	NA	Available	Ready to wear	Stitched Blouse	up to 38 Inch with margin of 42 inch
24915	Two tone satin silk	Tissue	Pure Handwork/ Khatli Work	NA	Available	Ready to wear	Stitched Blouse	up to 38 Inch with margin of 42 inch









24912









24911

FABRIC : SHIMMER CHIFFON  
BLOUSE : HAND WORK READY TO WEAR





**24910**

FABRIC : TWO TONE SATIN SILK  
BLOUSE : HAND WORK READY TO WEAR





**24908C**

FABRIC : TWO TONE SATIN SILK  
BLOUSE : HAND WORK READY TO WEAR





24908



24908

FABRIC : TWO TONE SATIN SILK  
BLOUSE : HAND WORK READY TO WEAR







**24907**

FABRIC : TWO TONE SATIN SILK  
BLOUSE : HAND WORK READY TO WEAR





## HOW TO WEAR ELYSSIA?

Let the drapes shine—pair them with minimal accessories like a sleek clutch or a delicate ring for a balanced yet chic look.



|||



24906



24906

FABRIC : TWO TONE SATIN SILK  
BLOUSE : HAND WORK READY TO WEAR





24905

FABRIC : CREPE SATIN SILK  
BLOUSE : HAND WORK READY TO WEAR









# WHY SHOULD YOU CHOOSE ELYSSIA?

Each saree in the Elyssia collection is a testament to exceptional craftsmanship.  
The intricate sequins and cut dana work showcase  
the quality and artistry behind every piece, making it a true work of wearable art.

24904





24904

FABRIC : TWO TONE SATIN SILK  
BLOUSE : HAND WORK READY TO WEAR





  
MOHMANTHAN™

  
MAHOTSAV  
GROUP

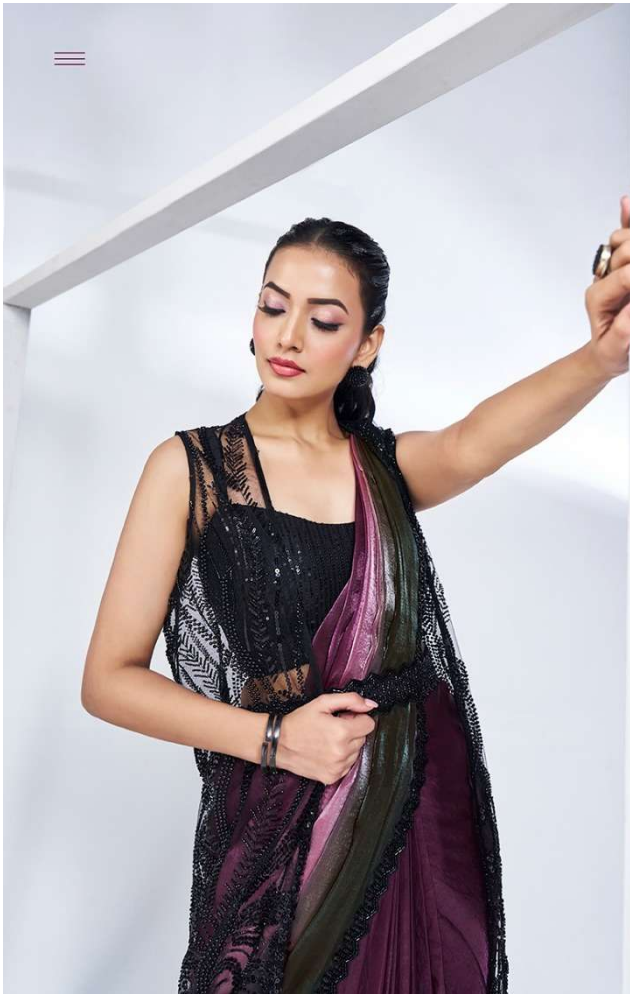
ELYSSIA

### WHAT IS ELYSSIA?

The name Elyssia evokes thoughts of elegance and paradise, symbolizing a world of beauty and grace. Just like its name, the collection embodies sophistication, luxury, and timeless charm.







24903

FABRIC : TWO TONE SATIN SILK  
BLOUSE : HAND WORK READY TO WEAR