

A woman with dark hair is standing in a room with warm, golden-brown walls. She is wearing a heavily embroidered gold lehenga with a matching long-sleeved blouse and a sheer dupatta. She is looking out of a large, multi-paned window on the left. The lighting is soft and warm, creating a romantic atmosphere.

ALIZEH  
BOLD & BEAUTIFUL

THE  
*White*  
BRIDE  
VOL-2



ALIZEH  
BOLD & BEAUTIFUL



//1074-E//

*Glancing aside*

THESE WERE THE FINEST THREADS THAT  
THEY COULD CONJURE. THE PUREST OF THE PURE!





A woman with dark hair is standing in a room with warm, golden-brown walls and a large window with a grid pattern. She is wearing a highly detailed gold lehenga with intricate floral embroidery and a matching long-sleeved blouse. She is looking out the window with a slight smile. The overall mood is elegant and romantic.

ALIZEH  
BOLD & BEAUTIFUL

THE  
*White*  
BRIDE  
VOL-2



A woman with dark hair is standing in a room with warm, golden-brown walls and a large window with a grid pattern. She is wearing a highly detailed, gold-colored lehenga with intricate floral and geometric patterns. The lehenga has a long, sheer dupatta with matching embroidery. She is looking out the window with a slight smile. The overall lighting is soft and warm, creating a romantic and elegant atmosphere.

ALIZEH  
BOLD & BEAUTIFUL

THE  
*White*  
BRIDE  
VOL-2



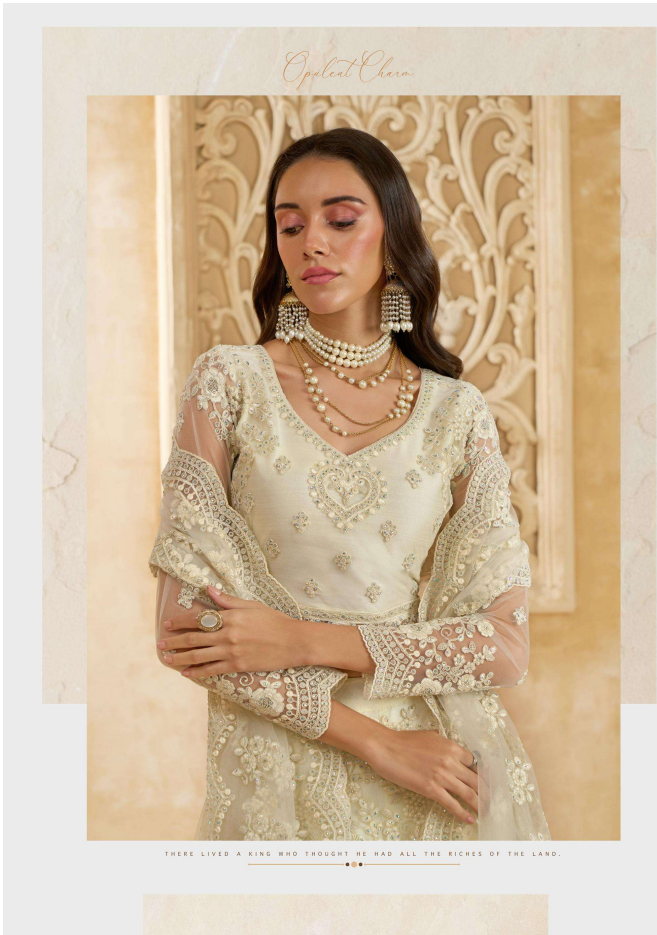


THEY HAIL FROM A WORLD WHERE ALL IS HEAVENLY.



//1075-E//







*Face Of the Year*

HER FACE ADORNES EVERY TELEVISION SCREEN ACROSS  
THE COUNTRY, AND INDEED THE WORLD.



**ALIZEH**  
BOLD & BEAUTIFUL



//1081-E//







ALIZEE  
READY TO WEAR

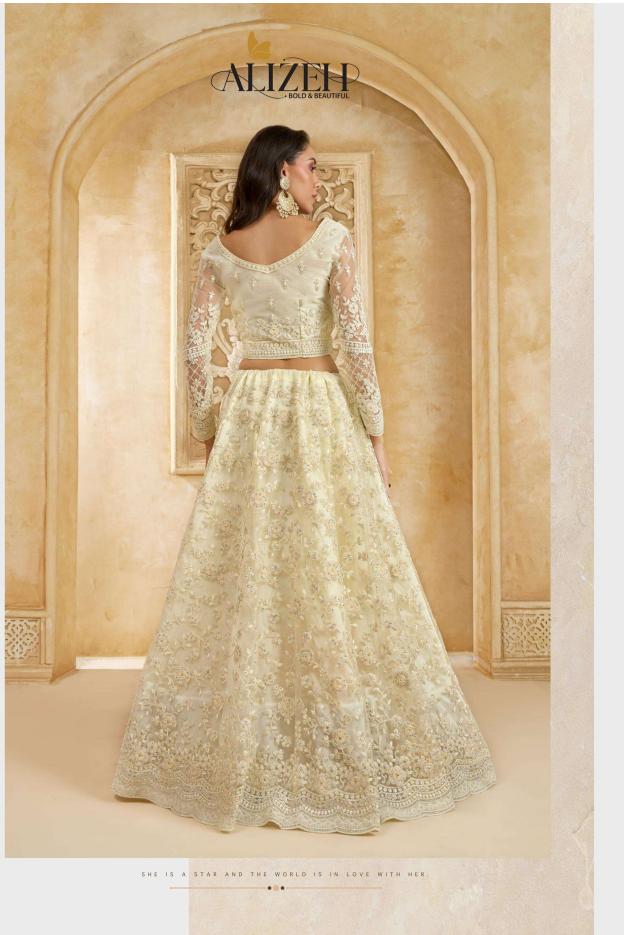
*Eternal Magic*

FADES FADE, STYLES WITHHER, TASTES CHANGE.



//1083-E//









//1074-D//



//1074-E//



//1075-D//



//1075-E//



//1081-D//



//1081-E//



//1082-D//



//1082-E//



//1083-D//



//1083-E//



//1084-D//



//1084-E//





//1075-E//

*Display Pattern*

SOME SAY THEY ARE NOT PATTERNS.



ALIZEH  
BOLD & BEAUTIFUL









//1082-E//



ALIZEH  
BOLD & BEAUTIFUL

HER THREADS ENFOLD HER IN AN ETERNAL PROMISE OF YOUTH.





//1082-D//

*International Charm*



**ALIZEH**  
BOLD & BEAUTIFUL

SHE IS INDIAN IN LOOKS, IN SPIRIT, AT HEART...EVEN IN DRESS.





*The Next Generation Muse*

SHE'S THE FORCE THAT GIVES BIRTH TO MASTERPIECES. THE MODERN DAY MUSE.





ALIZEH  
BOLD & BEAUTIFUL



BUT SHE SMILES, UNBOtherED. SHE HAS MASTERED THE ART OF ETERNAL BEAUTY



//1083-E//





EACH TIER HAS BEEN CRAFTED WITH IMMEDIATE CARE.

*The Majestic*



//1084-E//





















*Grace the Occasion* LET THE CELEBRATIONS COME TO A STANDSTILL WHEN YOU STRIDE IN.









*The Glitz Chick*



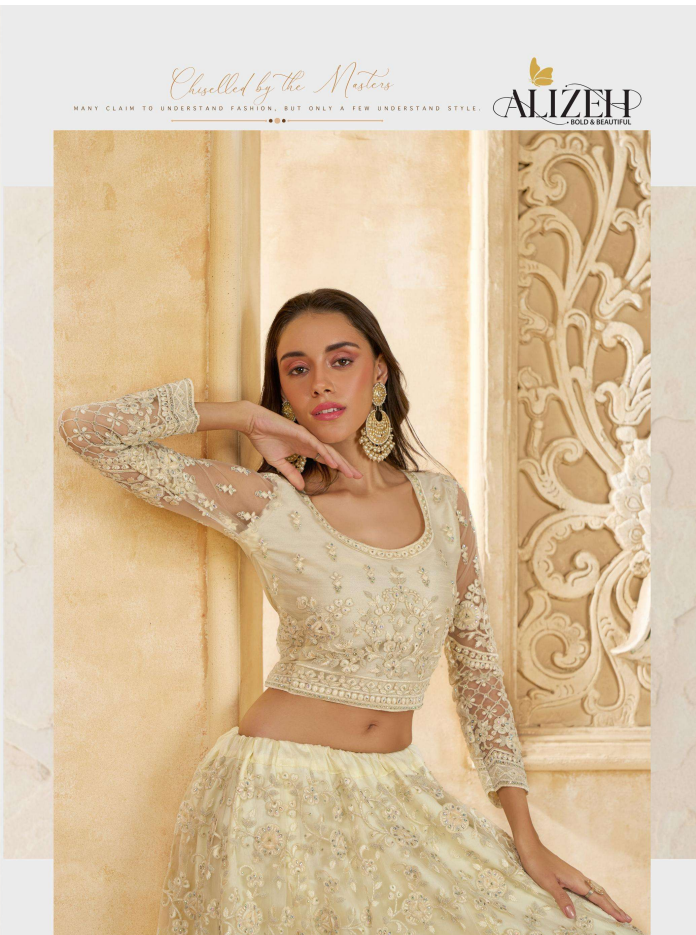
THEY RAISE A TOAST TO LIFE AND TO HER SPLENDID ATTIRE.

**ALIZEH**  
GOLD & BEAUTIFUL



//1084-D//











THESE DAMSELS ARE ALSO DRESSED IN GARMENTS WHICH  
NEVER FADE WITH TIME, WITH TRENDS, WITH FADS.

*Unblemished Beauty*



**ALIZEH**  
BOLD & BEAUTIFUL



//1074-D//



A woman with dark hair is standing in a room with warm, golden-brown walls and a large window with a grid pattern. She is wearing a highly detailed gold lehenga with intricate floral embroidery and a matching long-sleeved blouse. She is looking out the window. The overall mood is elegant and traditional.

ALIZEH  
BOLD & BEAUTIFUL

THE  
*White*  
BRIDE  
VOL-2



## **DESCRIPTION:**

### **FABRIC DESCRIPTION:**

**LEHenga & CHOLI FABRIC- NET WITH SILK INNER**

**DUPATTA FABRIC – NET**

- ❖ ALL LEHENGAS WITH 3 MTRS FLAIR, CANCAN & CANVAS ATTACHED
- ❖ WORK DESCRIPTION- CORDING & THREAD WORK WITH STONE WORK ALL OVER
- ❖ BLOUSE LENGTH- 16", BLOUSE WIDTH- 44" (CAN BE STITCHED UP TO 46" BUST)
  - ❖ LEHenga LENGTH- 44" , LEHenga WAIST- 44"