

Enigma





Crisp white Co-Ord set with a colourful embroidered crop top. This vibrant look is perfect for a fresh and modern style.
Add statement earrings and nude heels to complete the ensemble.

◆◆◆
DRS30



ARYA DESIGNS

Enigma

SKU	MAIN COLOUR	TOP FAB	BOTTOM FAB	SIZE	WORK	PRICE
DRS-21	DARK GREY	ORGANZA	ORGANZA	XS,S,M,L,XL,XXL	HANDWORK	2105/- (FLATE) + 12%(GST) + SHIPPING
DRS-22	GREY	ORGANZA	ORGANZA	XS,S,M,L,XL,XXL	HANDWORK	2275/- (FLATE) + 12%(GST) + SHIPPING
DRS-23	AQUA BLUE	ORGANZA	ORGANZA	XS,S,M,L,XL,XXL	HANDWORK	3410/- (FLATE) + 12%(GST) + SHIPPING
DRS-24	BABY PINK	ORGANZA	ORGANZA	XS,S,M,L,XL,XXL	HANDWORK	3070/- (FLATE) + 12%(GST) + SHIPPING
DRS-25	BLACK	ORGANZA	ORGANZA	XS,S,M,L,XL,XXL	HANDWORK	1875/- (FLATE) + 12%(GST) + SHIPPING
DRS-26	BLACK	ORGANZA	ORGANZA	XS,S,M,L,XL,XXL	HANDWORK	1990/- (FLATE) + 12%(GST) + SHIPPING
DRS-27	PARROT GREEN	ORGANZA	ORGANZA	XS,S,M,L,XL,XXL	HANDWORK	3410/- (FLATE) + 12%(GST) + SHIPPING
DRS-28	PEACH	ORGANZA	ORGANZA	XS,S,M,L,XL,XXL	EMBROIDERY	1420/- (FLATE) + 12%(GST) + SHIPPING
DRS-29	LAVENDER	ORGANZA	ORGANZA	XS,S,M,L,XL,XXL	HANDWORK	1990/- (FLATE) + 12%(GST) + SHIPPING
DRS-30	WHITE	GEORGETTE	GEORGETTE	XS,S,M,L,XL,XXL	HANDWORK	4545/- (FLATE) + 12%(GST) + SHIPPING

TOTAL DESIGNS : 10 PCS

ALL RATES ARE FLATE NO DISCOUNT AND EXCLUSIVE OF GST AND SHIPPING



Lavender Co-Ord set with an embellished waist and long jacket. A sophisticated choice for any occasion.
Style with silver jewellery and platform heels for a polished look.

◆◆◆
DRS29



Crisp white Co-Ord set with a colourful embroidered crop top. This vibrant look is perfect for a fresh and modern style. Add statement earrings and nude heels to complete the ensemble.

◆◆◆
DRS30



Lavender Co-Ord set with an embellished waist and long jacket. A sophisticated choice for any occasion.
Style with silver jewellery and platform heels for a polished look.

◆◆◆
DRS29





Light pink Co-Ord set with sheer overlay and floral accents.
Perfect for a soft and feminine look. Pair with pearl accessories and blush-toned heels.

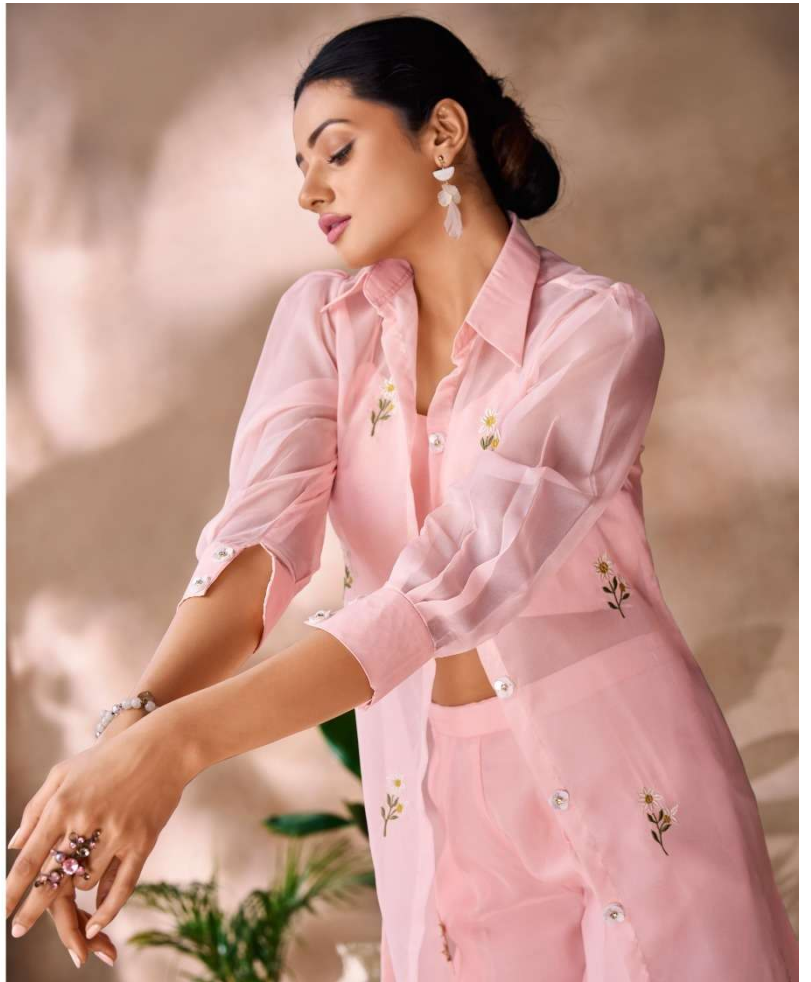
◆◆◆
DRS28





Light pink Co-Ord set with sheer overlay and floral accents.
Perfect for a soft and feminine look. Pair with pearl accessories and blush-toned heels.

◆◆◆
DRS28





Vibrant lime green Co-Ord set with flowy silhouette and embroidered details.
Embrace the playful yet elegant look with simple jewellery and comfortable sandals.

◆◆◆
DRS27





Vibrant lime green Co-Ord set with flowy silhouette and embroidered details.
Embrace the playful yet elegant look with simple jewellery and comfortable sandals.

◆◆◆
DRS27



◆◆◆
DRS26

Black Co-Ord ensemble with statement embroidery and voluminous sleeves.
This look is perfect for a bold and edgy style.
Add colourful earrings and pointed heels to complete the outfit.

Classic black Co-Ord set with sheer top and floral embroidery.
A modern twist on traditional chic. Style with bold earrings and black stilettos for a striking outfit.

◆◆◆
DRS25





Black Co-Ord ensemble with statement embroidery and voluminous sleeves.
This look is perfect for a bold and edgy style.
Add colourful earrings and pointed heels to complete the outfit.

◆◆◆
DRS26





Classic black Co-Ord set with sheer top and floral embroidery. A modern twist on traditional chic. Style with bold earrings and black accessories for a striking outfit.

◆ ◆ ◆
DRS25



Blush pink Co-Ord set with an asymmetrical long jacket. The floral embroidery adds a touch of elegance.
Pair with delicate earrings and strappy heels for a graceful look.

◆◆◆
DRS24



Blush pink Co-Ord set with an asymmetrical long jacket. The floral embroidery adds a touch of elegance. Pair with delicate earrings and strappy heels for a graceful look.



◆◆◆
DRS24





Icy blue Co-Ord set with a cape overlay adorned with floral embellishments.
Embrace the ethereal charm with statement earrings and soft curls.

◆◆◆
DRS23

Icy blue Co-Ord set with a cape overlay adorned with floral embellishments.
Embrace the ethereal charm with statement earrings and soft curls.

◆◆◆
DRS23





Soft taupe Co-Ord ensemble with delicate embroidered details. This set exudes understated sophistication.
Style it with pearl earrings and nude pumps for a refined appearance.

◆◆◆
DRS22



Slate grey Co-Ord set featuring a sheer shirt with a floral accent.
This contemporary look is perfect for a minimalist vibe.
Pair it with silver jewellery and sleek heels for an elegant finish.

◆◆◆
DRS21

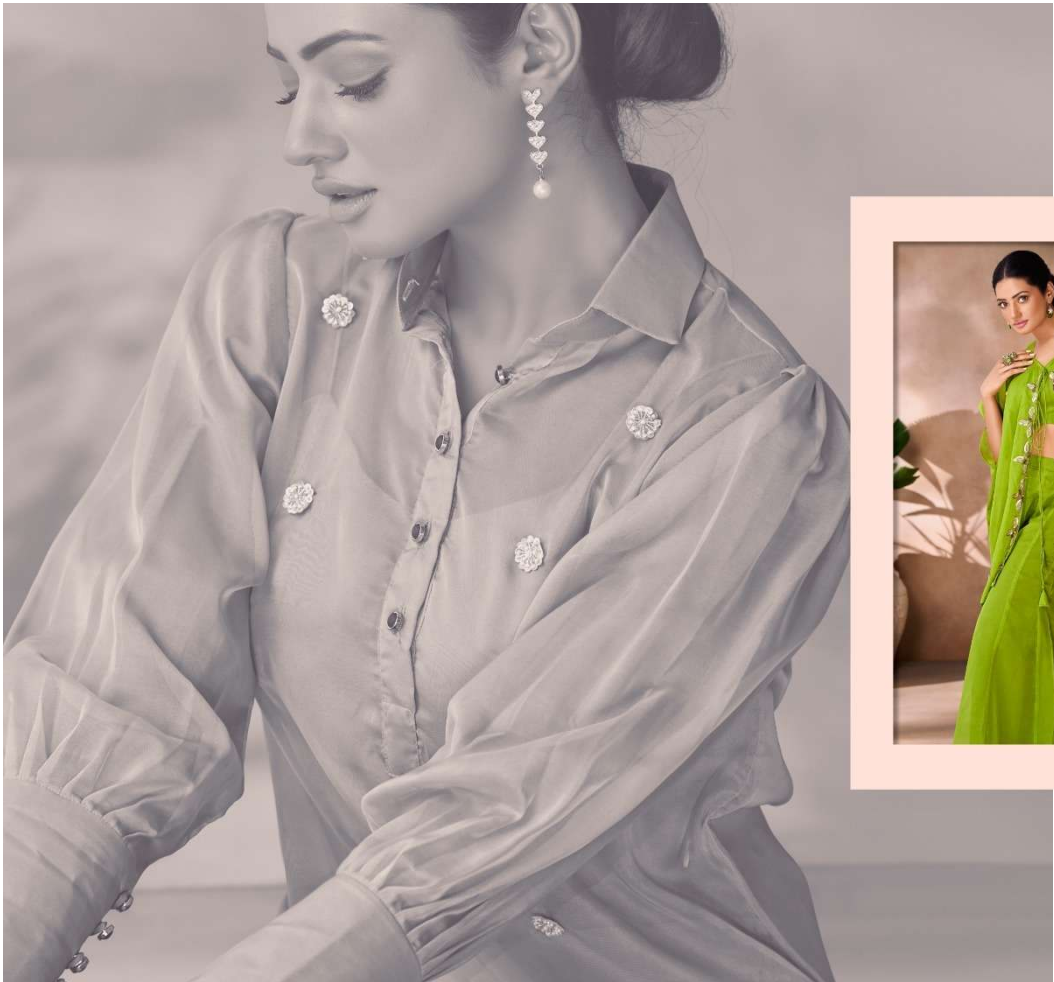




Soft taupe Co-Ord ensemble with delicate embroidered details.
This set exudes understated sophistication.
Style it with pearl earrings and nude pumps for a refined appearance.



◆◆◆
DRS22





Slate grey Co-Ord set featuring a sheer shirt with a floral accent.
This contemporary look is perfect for a minimalist vibe. Pair it with silver jewellery and sleek heels for an elegant finish.

◆◆◆
DRS21



Enigma

