



25319

Saree Style : Ready to wear
Fabric : Two Tone Satin Silk
Work : Pearl with Handwork
Accessories : Blouse, Poncho, Belt

Saree Fabric	Blouse Fabric	Work	Accessories	Belt	Blouse
Two Tone Satin Silk	Two Tone Satin Silk	Pearl with Hand Work	Cloak Blouse, Belt	Available	up to 38 Inch with margin of 42 inch
Shimmer Chiffon	Shimmer Chiffon	Sequins with Hand Work	Blouse, Cape, Belt	Available	up to 38 Inch with margin of 42 inch
Crepe Satin Silk	Crepe Satin Silk	Pearl with Hand Work	Blouse, Belt	Available	up to 38 Inch with margin of 42 inch
Crepe Satin Silk	Malai Satin	Dual Sequins with Hand Work	Blouse, Poncho, Belt	Available	up to 38 Inch with margin of 42 inch
Two Tone Satin Silk	Two Tone Satin Silk	Dual Sequins with Pearl Work	Blouse, Belt	Available	up to 38 Inch with margin of 42 inch
Two Tone Satin Silk	Malai Satin	Dual Sequins with Hand Work	Blouse, Belt	Available	up to 38 Inch with margin of 42 inch
Two Tone Satin Silk	Malai Satin	Dual Sequins with Pearl and Hand Work	Blouse, Belt	Available	up to 38 Inch with margin of 42 inch
Two Tone Satin Silk	Malai Satin	Sequins with Pearl Work	Blouse, Poncho, Belt	Available	up to 38 Inch with margin of 42 inch
Crepe Satin Silk	Crepe Satin Silk	Pearl with Hand Work	Two Blouses, Belt	Available	up to 38 Inch with margin of 42 inch
Two Tone Satin Silk	Two Tone Satin Silk	Four Sequins with Hand Work	Blouse, Belt	Available	up to 38 Inch with margin of 42 inch
Two Tone Satin Silk	Malai Satin	Dual Sequins with Pearl Work	Blouse, Poncho, Belt	Available	up to 38 Inch with margin of 42 inch
Two Tone Satin Silk	Two Tone Satin Silk	Pearl with Hand Work	Blouse, Poncho, Belt	Available	up to 38 Inch with margin of 42 inch
Two Tone Satin Silk	Malai Satin	Dual Sequins with Mirror Work	Blouse, Cape, Belt	Available	up to 38 Inch with margin of 42 inch



25319



@MAHOTSAVGROUPOFFICIAL

Follow us for updates!

Saree Style : Ready to wear
Fabric : Two Tone Satin Silk
Work : Pearl with Handwork
Accessories : Blouse, Poncho, Belt



Scan the code for an
exclusive video



25320



@MAHOTSAVGROUPOFFICIAL

Follow us for updates!

Saree Style : *Ready to wear*
Fabric : *Two Tone Satin Silk*
Work : *Dual Sequins with Mirror Work*
Accessories : *Blouse, Cape, Belt*



Scan the code for an
exclusive video

MAHOTSAV GROUP PRESENTS
MOHMANTHAN-Royal
"Luna"

DESIGN NO.	DESCRIPTION	PRICE
25308	READY TO WEAR SAREE	4205
25309	READY TO WEAR SAREE	3675
25310	READY TO WEAR SAREE	3535
25311	READY TO WEAR SAREE	3425
25312	READY TO WEAR SAREE	3145
25313	READY TO WEAR SAREE	3155
25314	READY TO WEAR SAREE	3635
25315	READY TO WEAR SAREE	3935
25316	READY TO WEAR SAREE	3515
25317	READY TO WEAR SAREE	3825
25318	READY TO WEAR SAREE	3855
25319	READY TO WEAR SAREE	3365
25320	READY TO WEAR SAREE	3775

NOTE : GST@5% WILL BE CHARGED ON THE ABOVE PRICES.



25317



@MAHOTSAVGROUPOFFICIAL

Follow us for updates!

Saree Style : Ready to wear
Fabric : Two Tone Satin Silk
Work : Four Sequins with Handwork
Accessories : Blouses, Belt



Scan the code for an
exclusive video



25318



@MAHOTSAVGROUPOFFICIAL

Follow us for updates!

Saree Style : Ready to wear
Fabric : Two Tone Satin Silk
Work : Dual Sequins with Pearl Work
Accessories : Blouse, Poncho, Belt



Scan the code for an
exclusive video



25315



@MAHOTSAVGROUPOFFICIAL

Follow us for updates!

Saree Style : Ready to wear
Fabric : Two Tone Satin Silk
Work : Sequins with Pearl Work
Accessories : Blouse, Poncho, Belt



Scan the code for an
exclusive video



25313



@MAHOTSAVGROUPOFFICIAL

Follow us for updates!

Saree Style : Ready to wear
Fabric : Two Tone Satin Silk
Work : Dual Sequins with Pearl Work
Accessories : Blouse, Belt



Scan the code for an
exclusive video



25314



@MAHOTSAVGROUPOFFICIAL

Follow us for updates!

Saree Style : Ready to wear
Fabric : Two Tone Satin Silk
Work : Dual Sequins
with Pearl and Hand Work
Accessories : Blouse, Belt



Scan the code for an
exclusive video



25316



@MAHOTSAVGROUPOFFICIAL

Follow us for updates!

Saree Style : *Ready to wear*
Fabric : *Crepe Satin Silk*
Work : *Pearl with Handwork*
Accessories : *Two Blouses, Belt*



Scan the code for an
exclusive video



25311



@MAHOTSAVGROUPOFFICIAL

Follow us for updates!

Saree Style : *Ready to wear*
Fabric : *Crepe Satin Silk*
Work : *Crepe Satin Silk*
Accessories : *Blouse, Poncho, Belt*



Scan the code for an
exclusive video



25312



@MAHOTSAVGROUPOFFICIAL

Follow us for updates!

Saree Style : *Ready to wear*
Fabric : *Two Tone Satin Silk*
Work : *Dual Sequins with Pearl Work*
Accessories : *Blouse, Belt*



Scan the code for an
exclusive video



25309



@MAHOTSAVGROUPOFFICIAL

Follow us for updates!

Saree Style : *Ready to wear*
Fabric : *Shimmer Chiffon*
Work : *Sequins with Handwork*
Accessories : *Blouse, Cape, Belt*



Scan the code for an
exclusive video



25310



@MAHOTSAVGROUPOFFICIAL

Follow us for updates!

Saree Style : *Ready to wear*
Fabric : *Crepe Satin Silk*
Work : *Pearl with Handwork*
Accessories : *Blouse, Belt*



Scan the code for an
exclusive video



25313

Saree Style : Ready to wear
Fabric : Two Tone Satin Silk
Work : Dual Sequins with Handwork
Accessories : Blouse, Belt



25310

Saree Style: Ready to wear
Fabric : Crepe Satin Silk
Work : Pearl with Handwork
Accessories: Blouse, Belt



25308



@MAHOTSAVGROUPOFFICIAL

Follow us for updates!

Saree Style : Ready to wear
Fabric : Two Tone Satin Silk
Work : Pearl with Handwork
Accessories : Cloak Blouse, Bel

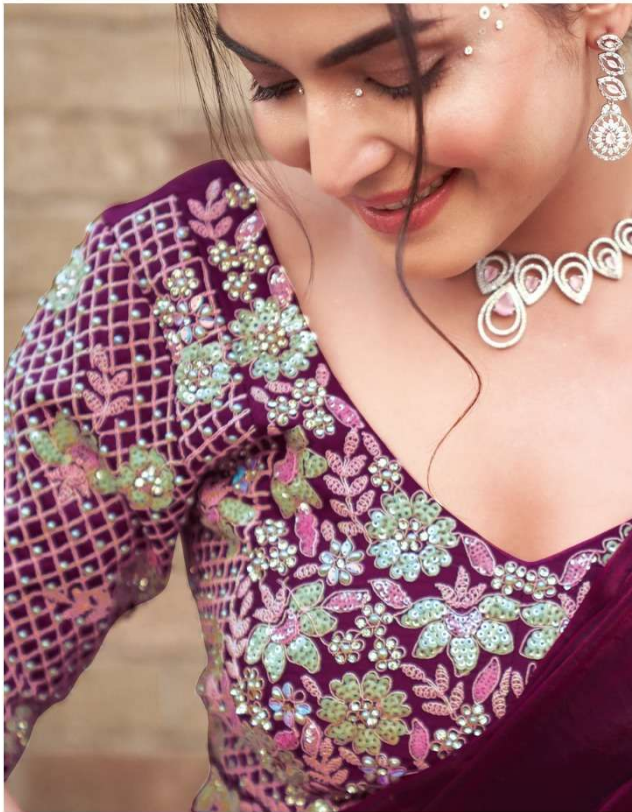


Scan the code for an
exclusive video



25319

Saree Style : Ready to wear
 Fabric : Two Tone Satin Silk
 Work : Pearl with Handwork
 Accessories : Blouse, Poncho, Belt



25314

Saree Style : Ready to wear
 Fabric : Two Tone Satin Silk
 Work : Dual Sequins
 with Pearl and Hand Work
 Accessories : Blouse, Belt



25317

Saree Style : Ready to wear
Fabric : Two Tone Satin Silk
Work : Four Sequins
with Handwork
Accessories : Blouse, Belt



25311

Saree Style : Ready to wear
Fabric : Crepe Satin Silk
Work : Crepe Satin Silk
Accessories : Blouse, Poncho, Belt





25318

Saree Style : Ready to wear
 Fabric : Two Tone Satin Silk
 Work : Dual Sequins
 with Pearl Work
 Accessories : Blouse, Poncho, Belt



25312

Saree Style : Ready to wear
Fabric : Two Tone Satin Silk
Work : Dual Sequins with Pearl Work
Accessories : Blouse, Belt



25315

Saree Style : Ready to wear
Fabric : Two Tone Satin Silk
Work : Sequins with Pearl Work
Accessories : Blouse, Poncho, Belt



25316

Saree Style : Ready to wear
Fabric : Crepe Satin-Silk
Work : Pearl with Handwork
Accessories : Two Blouses, Belt



25308

Saree Style : Ready to wear
Fabric : Two Tone Satin Silk
Work : Pearl with Handwork
Accessories : Cloak Blouse, Bel



25320

Saree Style : Ready to wear
Fabric : Two Tone Satin Silk
Work : Dual Sequins
with Minor Work
Accessories : Blouse, Cape, Belt