



SAFA
CREATION





SF613 G

Fabric:
Embroidered georgette front with sequins work
Embroidered georgette sleeves
Embroidered tissue sleeves lace
Embroidered tissue ghera lace
Embroidered Heavy fox dupatta
Heavy santoon trouser





SAFA
CREATION



SF613 F

Fabric:
 Embroidered georgette front with sequins work
 Embroidered georgette sleeves
 Embroidered tissue sleeves lace
 Embroidered tissue ghera lace
 Embroidered Heavy fox dupatta
 Heavy santoon trouser





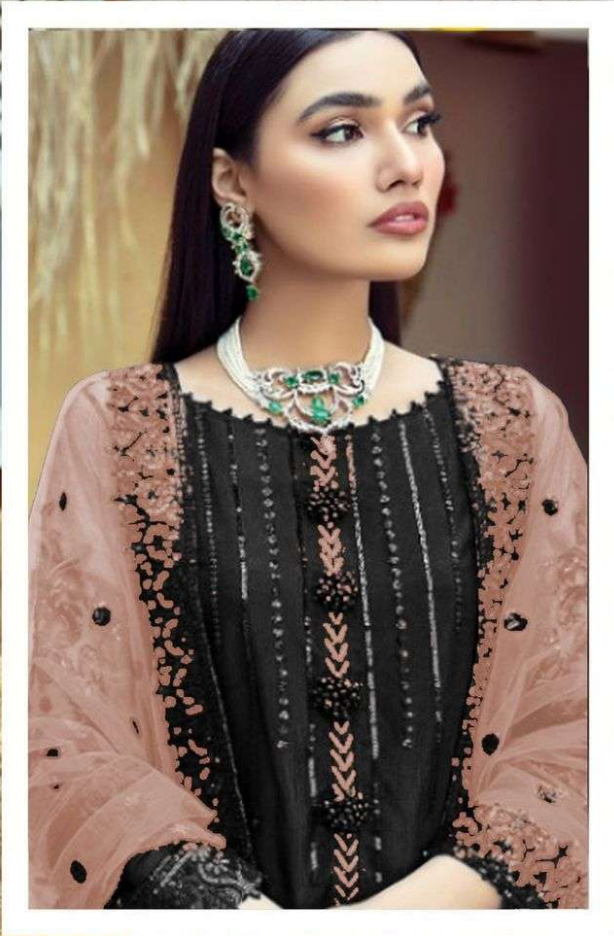
SAFA
CREATION



SF613-T

Fabric:
Embroidered georgette front with sequins work
Embroidered georgette sleeves
Embroidered tissue sleeves lace
Embroidered tissue ghera lace
Embroidered Heavy fox dupatta
Heavy santoon trouser

- handwash
- don't bleach
- don't dry in the dryer
- don't dry clean
- don't press
- don't press out



SF613-H

Fabric:
Embroidered georgette front with sequins work
Embroidered georgette sleeves
Embroidered tissue sleeves lace
Embroidered tissue ghera lace
Embroidered Heavy fox dupatta
Heavy santoon trouser





SF613 E

Fabric:
 Embroidered georgette front with sequins work
 Embroidered georgette sleeves
 Embroidered tissue sleeves lace
 Embroidered tissue ghera lace
 Embroidered Heavy fox dupatta
 Heavy santoon trouser





SAFA
CREATION

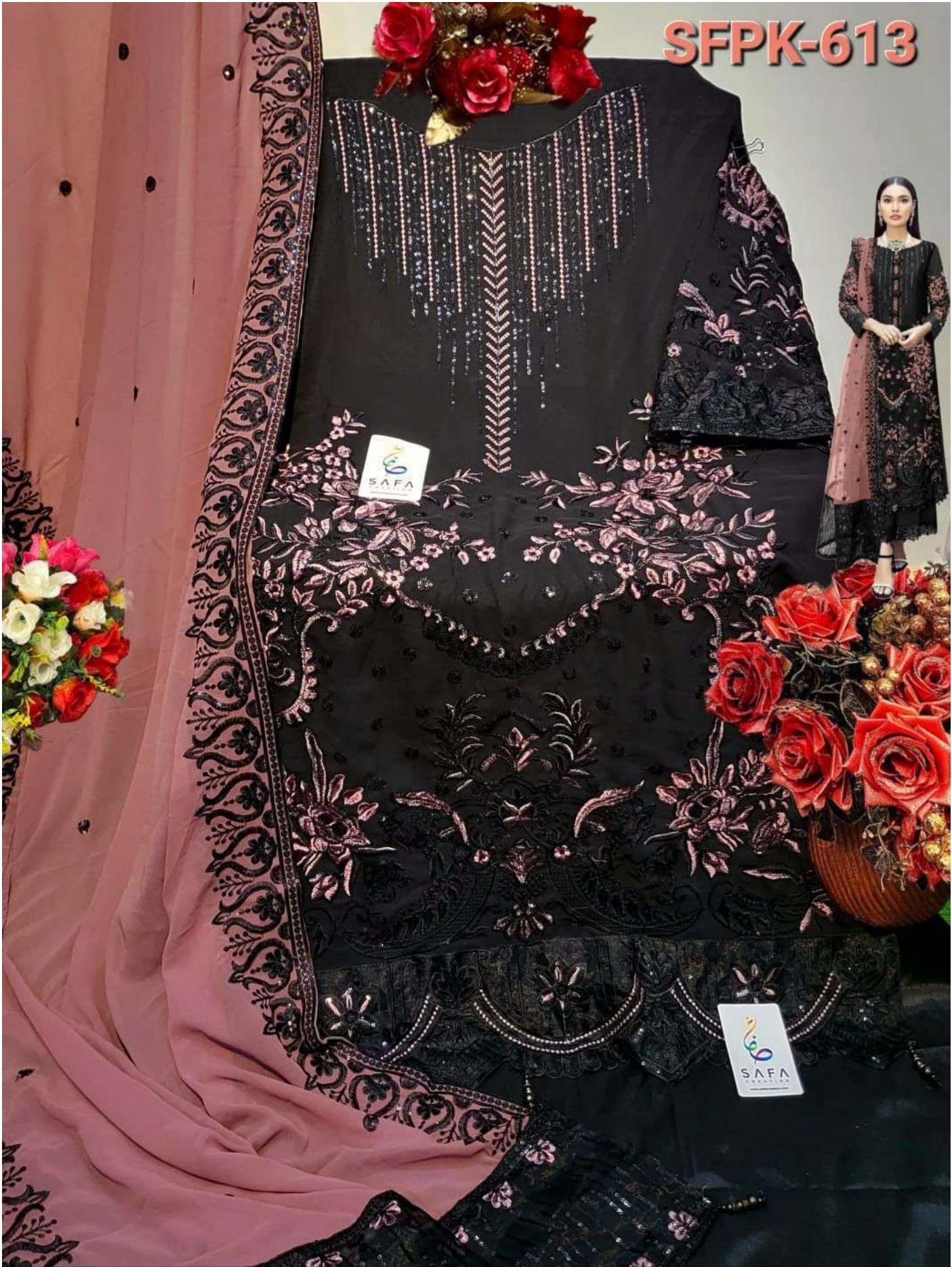


SF613 H

Fabric:
Embroidered georgette front with sequins work
Embroidered georgette sleeves
Embroidered tissue sleeves lace
Embroidered tissue ghera lace
Embroidered Heavy fox dupatta
Heavy santoon trouser



SFPK-613



SAFA

SAFA