


ALIZEH
BOLD & BEAUTIFUL

READYMADE

VOL-02





READYMADE - 2

| D. NO | Fabric | Color |
|-------|-----------|--------------|
| 5010 | GEORGETTE | LIGHT PINK |
| 5011 | CHINON | PRINTED BLUE |

FABRIC DESCRIPTION:

INNER & BOTTOM – SANTOON/AMERICAN, DUPATTA/CAPE – SOFT NET/CHINON

WORK DESCRIPTION:

BLOUSE - PURE KHATLI WORK WITH SEQUINS, MOTI, CUTDANA, RESHAM

SIZE DETAILS:

TWO SIZES

1. 36 INCHES BUST, 30-32 INCHES WAIST,
2. 40 INCHES BUST, 34-36 INCHES WAIST

(2 INCHES MARGIN AVAILABLE)

1. CHOLI LENGTH – 14-15 INCHES
2. LEHENGA/SHARARA LENGTH – 40-42 INCHES



5010



A priceless
Of all the things in heaven and earth that man holds close to his heart, when you look as you do in these threads...he holds nothing dearer. Be above the rest.





A beauty pristine
The sparkling glitter of innocence is best exemplified through these designs. Be the queen of virtue you were destined to be.

5010





ALIZEH
BOLD & BEAUTIFUL

Universal Grace
Her gait knows no boundaries. Her elegance knows no limits. Her charm is a source of inspiration and wonderment across the world. Looking simply divine in her matchless attire, she rules the world with her smile. Her admirers follow, entranced.

5011



**ALIZEH**
BOLD & BEAUTIFUL

An unmatched richness
Class cannot be learned, it is inborn.
These beautiful garments help you express your unmatched class to the world outside. Go, enchant everyone!


ALIZEH
BOLD & BEAUTIFUL

READYMADE

VOL-02



ALIZEH
GOLD & BEAUTIFUL



Dreams come true
The look you always dreamed of. Now it comes to life with these fascinating new Salwars. Be the empress you always wanted to be.



5011

ALIZEH
BOLD & BEAUTIFUL

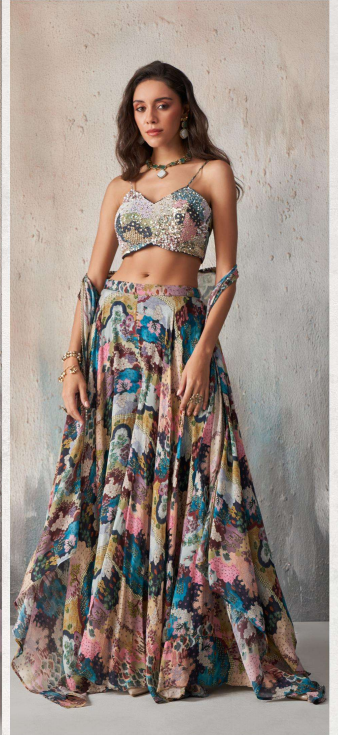


5011

ALIZEH
BOLD & BEAUTIFUL



5010



5011