



KRESHVA



अलकनंदा
ALAKNANDA



KRESHVA

अलकनंदा

ALAKNANDA

K-060





KRESHVA

अलकनंदा

ALAKNANDA

K-062





KRESHVA

अलकनंदा

ALAKNANDA

K-063



KRESHVA

अलकनंदा

ALAKNANDA

K-061



KRESHVA

अलकनंदा

ALAKNANDA

K-064





KRESHVA

अलकनंदा

ALAKNANDA

K-065

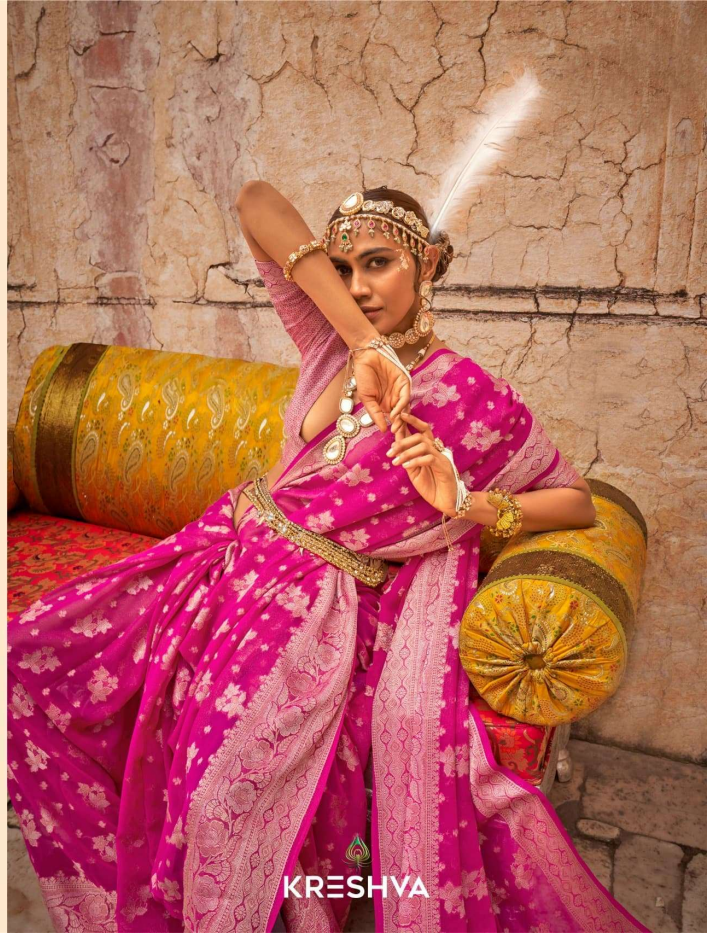

KRESHVA



A sari sometimes also saree or sadi is a women's garment from the Indian subcontinent it consists of an unstitched stretch of woven fabric arranged over the body as a robe, with one end attached to the waist, while the other end rests over one shoulder as a stole, sometimes bearing a part of the midri

अलकनंदा
ALAKNANDA







KRESHVA

A sari sometimes also saree or sadi is a women's garment from the Indian subcontinent it consists of an un-stitched stretch of woven fabric arranged over the body as a robe, with one end attached to the waist, while the other end rests over one shoulder as a stole, sometimes bearing a part of the midri



K-060



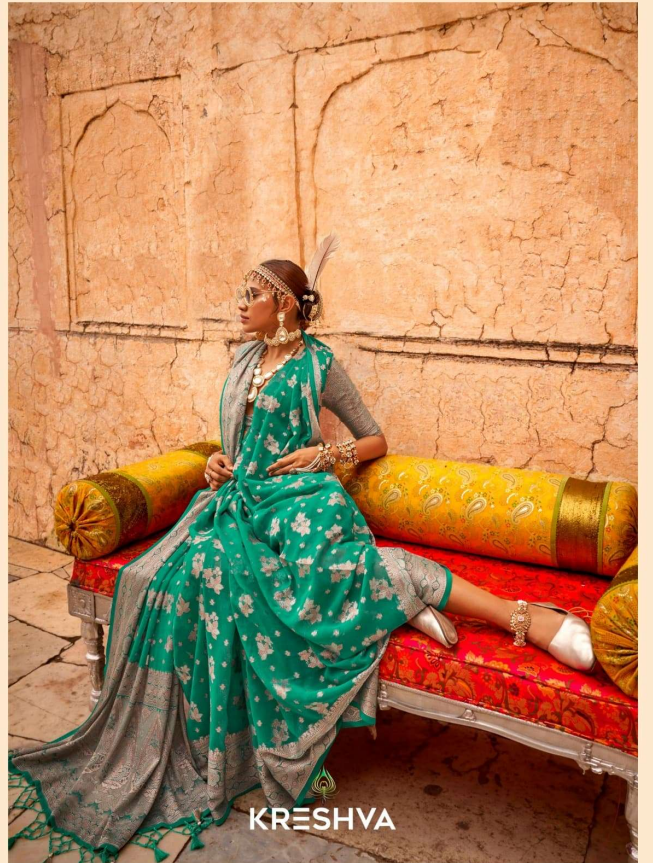


K-063

KRESHVA



K-062





K-065

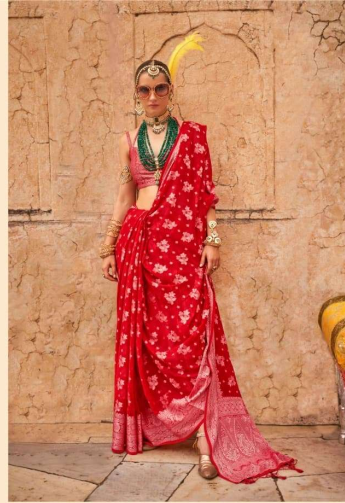
KRESHVA



K-060



K-061



K-063



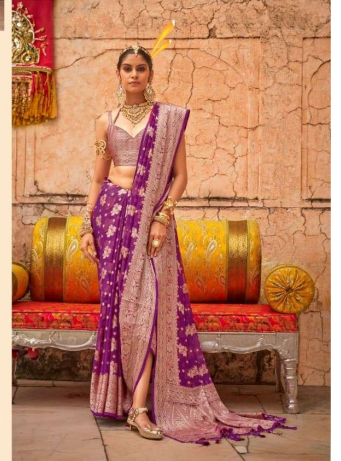
K-064



K-062

**KRESHVA**

अलकनंदा
ALAKNANDA



K-065



KRESHVA



अलकनंदा
ALAKNANDA