



VINTAGE

NX-01



Adorable
AMAZ
1001



shradho
PRESENTS
VINTAGE
STYLING
- FABRICS DETAILS -
• TOP: COTTON SOLID BATH
WITH HEAVY
EMBROIDERY WORK
• DUPETTA: NAJIBI PRINTED
• BOTTOM: SOLID COTTON
D. NO. - 1004
CARE INSTRUCTIONS





shradha
PRESENTS
VINTAGE
VRL-01

FABRICS DETAILS:-

- TOP- COTTON SOLID WITH BICOLOUR EMBROIDERY WORK
- SURFATA- NUMAN PRINTED
- BOTTOM- SOLID COTTON

D NO- 1001

CARE INSTRUCTIONS





Intricate
ARTISTRY
1002

shradha
1997-2017
PRESENTS
VINTAGE
11.12.21

FABRICS DETAIL:-

- TOP: COTTON SOLID BLEN WITH HEAVY EMBROIDERY WORK
- SKIRT: NAJWA PRINTED
- BOTTOM: SOLID COTTON

D.NO.-1006

CARE INSTRUCTIONS
☐ 30 40 60





Festive
WARDROBE



1003
∞



Royal
ELEGANCE
1004



shradha

PRESENTS

VINTAGE

FABRIC DETAILS:

- TOP: COTTON BLEND WITH NET
- BODICE: NET WITH PRINT
- BOTTOM: SOLID COTTON

• NO. - 1005

CARE INSTRUCTIONS





VINTAGE

NX-01



VINTAGE

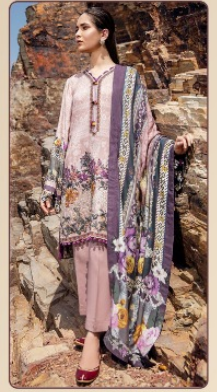
NX-01



1001



1002



1003



1004



1005



SJ

Beautiful
ATTITUDE

1005



shrodha
PRESENTS
VINTAGE
FABRICS DETAILS:
• TOP: COTTON 80% SILK 20%
• SLEEVES: 100% COTTON
• BOTTOM: 100% COTTON
D NO - 1905
CARE INSTRUCTIONS



shradha
PRESENTS
VINTAGE
VOGUE

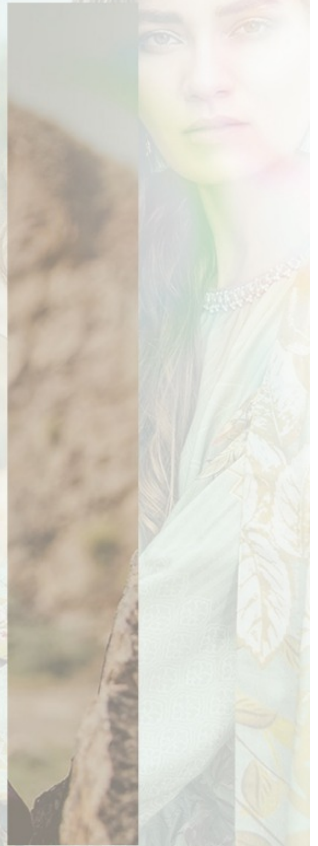
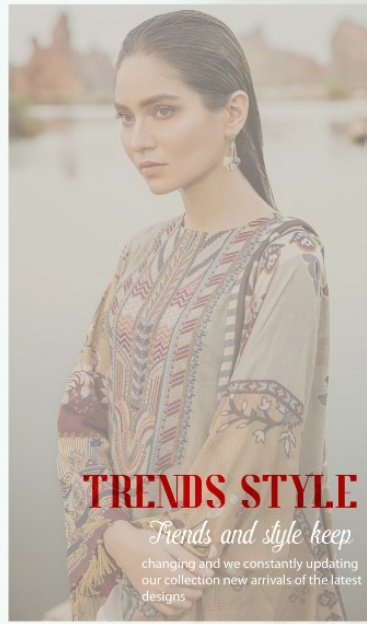
FABRICS DETAILS:

- TOP: COTTON SOLID WITH HEAVY EMBROIDERY WORK
- SLIP: SILK/NET
- BOTTOM: SOLID COTTON

D.NO. - 1007

CARE INSTRUCTIONS







shradha
DESIGNER

VINTAGE

NX-01

D.NO.	TOP	BOTTOM	DUPATTA
1001	COTTON SOLID SATIN (WITH HEAVY EMBROIDERY WORK)	SOLID COTTON	NAZMIN PRINTED
1002	COTTON SOLID SATIN (WITH HEAVY EMBROIDERY WORK)	SOLID COTTON	NAZMIN PRINTED
1003	COTTON SOLID SATIN (WITH HEAVY EMBROIDERY WORK)	SOLID COTTON	NAZMIN PRINTED
1004	COTTON SOLID SATIN (WITH HEAVY EMBROIDERY WORK)	SOLID COTTON	NAZMIN PRINTED
1005	COTTON SOLID SATIN (WITH HEAVY EMBROIDERY WORK)	SOLID COTTON	NAZMIN PRINTED

HEAVY WORK IN ALL PIECES

THANKS FOR YOUR SUPPORT

RATE :-650+ G.S.T. (EXTRA)



VINTAGE

NX-01