

A woman is shown from the chest up, wearing a vibrant red sari with intricate gold embroidery. The embroidery features floral and leaf patterns along the border and scattered across the fabric. She is adorned with traditional Indian jewelry, including a large, ornate gold maang tikka on her forehead, a matching gold earring, and a large, round gold ring on her finger. Her hand is gently holding the edge of the sari. The background is a soft, out-of-focus beige color.

AARAV  
T R E N D Z

DIMPY  
LEHANGA SERIES  
VOL. 4

Art  
Share



A woman is shown from the chest up, wearing a vibrant red sari with intricate gold embroidery. The embroidery features floral and leaf patterns along the border and scattered across the fabric. She is adorned with traditional Indian jewelry, including a large, ornate gold maang tikka on her forehead, a matching gold earring, and a large, round gold ring on her finger. Her hand is gently holding the edge of the sari. The background is a soft, out-of-focus beige color.

AARAV  
T R E N D Z

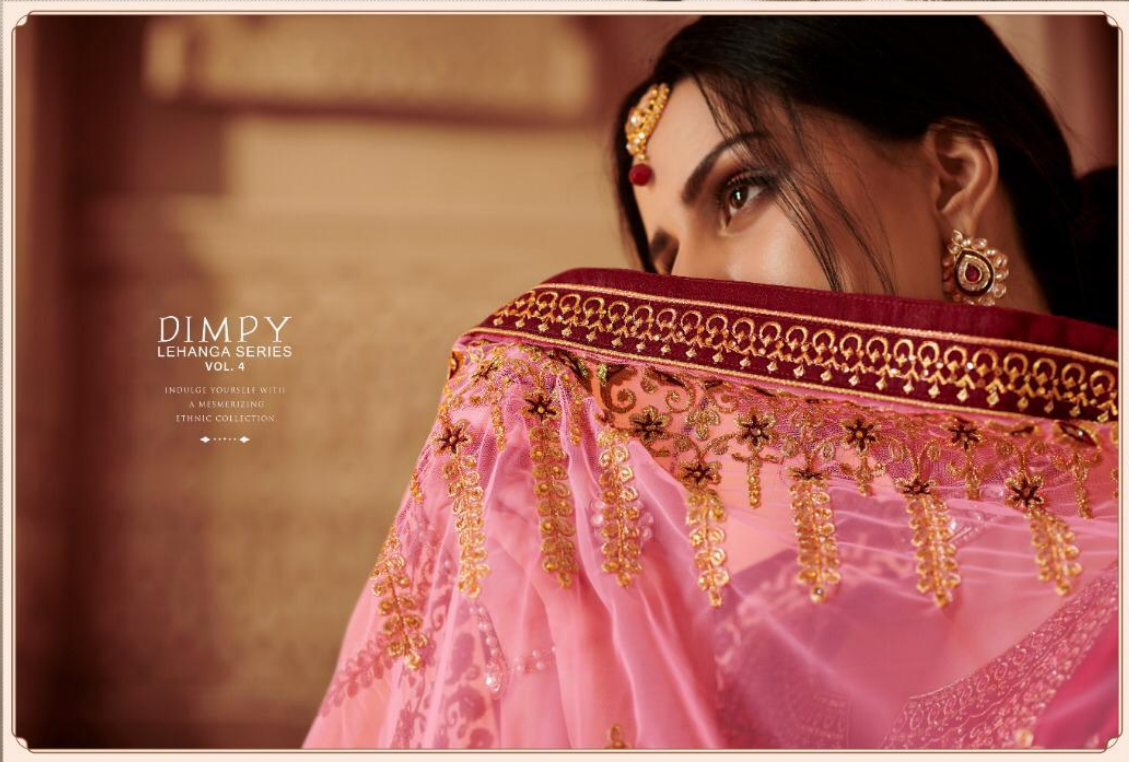
DIMPY  
LEHANGA SERIES  
VOL. 4

Art  
Share







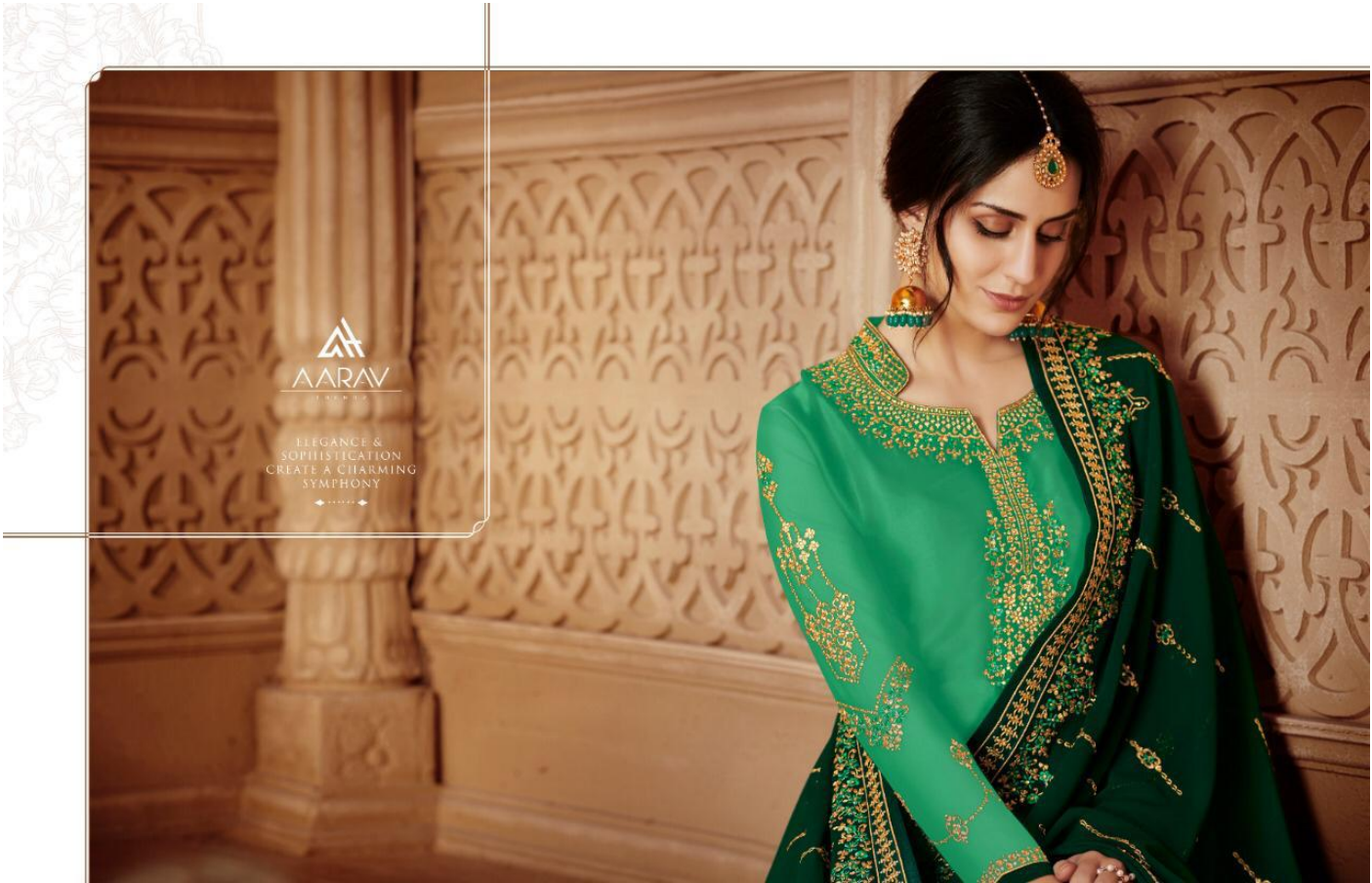


DIMPY  
LEHANGA SERIES  
VOL. 4

INDULGE YOURSELF WITH  
A MESMERIZING  
ETHNIC COLLECTION



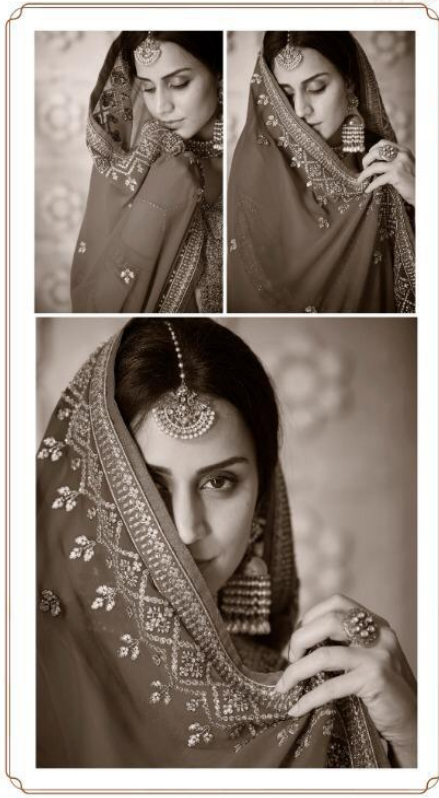




ELEGANCE &  
SOPHISTICATION  
CREATE A CHARMING  
SYMPHONY







◆◆◆ FABRICS THAT CONVEY ARTISTIC EXPRESSION ◆◆◆





◆...FASHION IS EVERYTHING THAT CAN PASS FASHIONABLE...◆



232





230



231



234



235



232



233



DIMPY  
LEHANGA SERIES  
VOL. 4







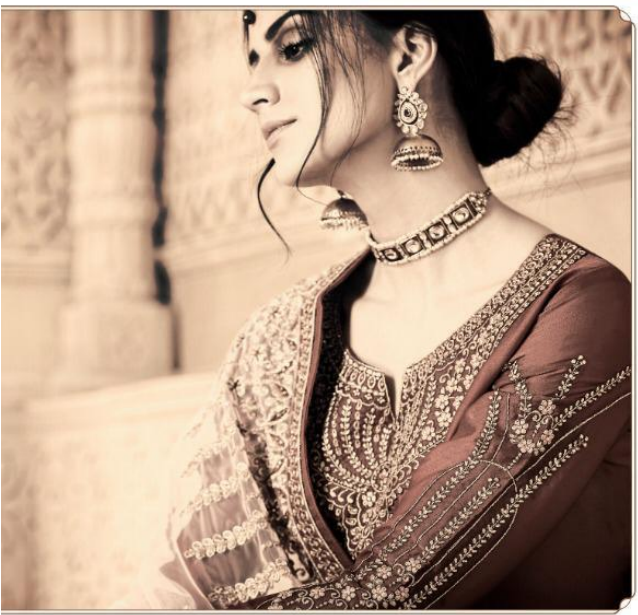


AARAV  
TRENDS



ELEGANT EMBROIDERED CONTRAST  
◆◆◆ ENSEMBLE ◆◆◆





CONTRAST ROMANTIC GEORGETTE  
WITH GAMINE TAILORING







FASHION MUST  
BE DEFINED  
BY COMFORT AND  
EASE OF  
MANEUVERABILITY







◆...THE MASTERPIECE FOR THE PERFECT OCCASION...◆



234



◆...THIS SEASON IS GIVING TO BE BRIGHT & COLORFUL...◆



231







AARAV  
T R E N D Z

DIMPY  
LEHANGA SERIES  
VOL. 4

Art  
Share





◆...DEFINE YOUR MOODS WITH DISTINCTIVE SILHOUETTES...◆





◆◆◆ FUN WITH FABRIC FOR THE FEMININE IN YOU ◆◆◆



230