

Sampann

SAGA VOL4

# SAGA

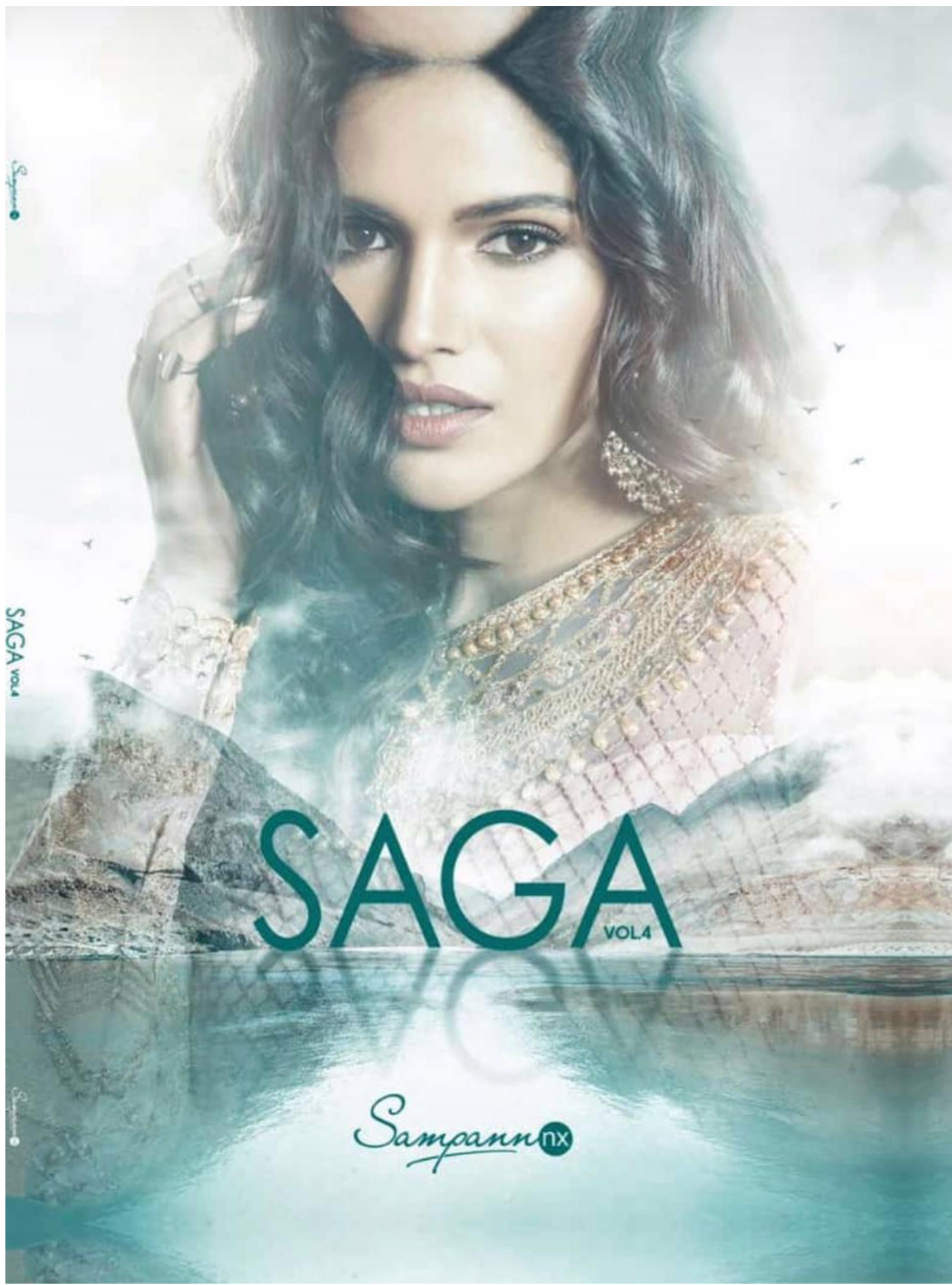
VOL4

Sampannnx

## SAGA

D.NO	DETAILS	PRICE
5401	FEATURING THIS AESTHETIC PASTEL GREEN PARTY WEAR GOWN IN ROUND NET WITH SATIN INNER. EMBROIDERY WORK IS COMPLETED WITH CODING , THREAD ,BADLA,JARI , SPARKLE SEQUINS & STONE EMBELLISHMENT. IT IS PAIRED WITH SOFT NET DUPATTA WITH HEAVILY ENHANCED WITH STONE EMBELLISHMENT & SANTOON INNER.	2715/-
5402	AMP UP YOUR ETHNIC LOOK WITH THIS BEAUTIFUL LIGHT GREY PARTY WEAR ANARKALI STYLE SUIT. THIS SET FEATURES TOP NET EMBROIDERED WITH CODING ,THREAD, JARI,BADLA, SPARKLE SEQUINS & STONE EMBELLISHMENT. IT IS PAIRED WITH BANGALORI (LEHenga & PANT).PANT IS ENHANCED BY BEAUTIFUL EMBROIDERY WITH SOFT ROUNT NET DUPATTA WITH HEAVILY ENHANCED BY STONE WORK MAKES YOUR DRESS EXQUISITE.	3595/-
5403	FEATURING THIS ALLURING BEIGE ANARKALI STYLE SUIT IN SILK BASE EMBROIDERED WITH THREAD, JARI, BADLA, SEQUINS AND THIS BEAUTIFUL ATTIRE HAS NET JACKET EMBROIDERED WITH FLORAL BUNCHES IN THREAD,JARI, BADLA,SEUINS & STONE EMBELLISHMENTS IT IS PAIRED WITH SOFT NET DUPATTA WHICH IS HEAVILY ENHANCED WITH STONE EMBELLISHMENT & SANTOON BOTTOM.	3375/-
5404	THIS SET FEATURES A GRACEFUL SEA BLUE ANARKALI IN SILK BASE WITH CHAIN STITCH EMBROIDERY IN THREAD , CODING, BADLA & STONE EMBELLISHMENTS. IT IS PAIRED WITH BANGLORI SILK LEHenga & SOFT NET DUPATTA WITH HEAVILY ENHANCED WITH STONE WORK.	3315/-
5405	FEATURING THIS ATTRACTIVE BEIGE PARTY WEAR ANARKLI IN ROUND NET . EMBROIDERY WORK IS COMPLETED WITH JARI , BADLA, CODING, SEQUINS & STONE WORK. BANGALORI SILK FABRIC IS ATTACHED IN THE HEMLINE OF ANARKALI. BEAUTIFUL TASSELS IS BEEN ADDED ON THE SLEEVES. IT IS PAIRED WITH SOFT NET DUPATTA WHICH IS HEAVILY ENHANCED WITH STONE EMBELLISHMENTS & SANTOON BOTTOM.	3355/-
5406	THIS SET FEATURES A GRACEFUL PINK PARTY WEAR ANARKALI STYLE SUIT . EMBROIDERED WITH THREAD, CODING,JARI, BADLA, SEQUINS & STONE WORK. IT IS PAIRED WITH BANGLORI ( LEHenga & PANT). PANT IS ENHANCED BY BEAUTIFUL EMBROIDERED BORDER & SOFT ROUND NET DUPATTA WHICH IS HEAVILY ENHANCED WITH STONE EMBELLISHMENT.	3585/-
5407	THIS SET FEATURES AN AMAZING PEACH PARTY ANARKALI SUIT . EMBROIDERED WITH THREAD, BADLA, CODING, JARI, SEQUINS & STONE EMBELLISHMENT . IT IS PAIRED WITH BANGLORI ( LEHenga & PANT). PANT IS ENHANCED BY BEAUTIFUL EMBROIDERY & SOFT NET DUPATTA WHICH IS HEAVILY ENHANCED WITH STONE EMBELLISHMENT.	3495/-
5408	THIS SET FEATURES AN EXQUISITE BROWN PARTY WEAR JACKET STYLE SUIT.EMBROIDERED WITH THREAD, CODING,BADLA, JARI, SEQUINS & STONE WORK. IT IS PAIRED WITH NET SKIRT & SOFT NET DUPATTA WHICH IS ENHANCED WITH STONE EMBELLISHMENT . BEAUTIFUL TASSELS IS BEEN ADDED AT THE HEMLINE OF JACKET.	2545/-
	<b>AVERAGE PRICE PER PCS = 3248/-</b>	<b>25980/-</b>
<b>GST CHARGES EXTRA</b>		





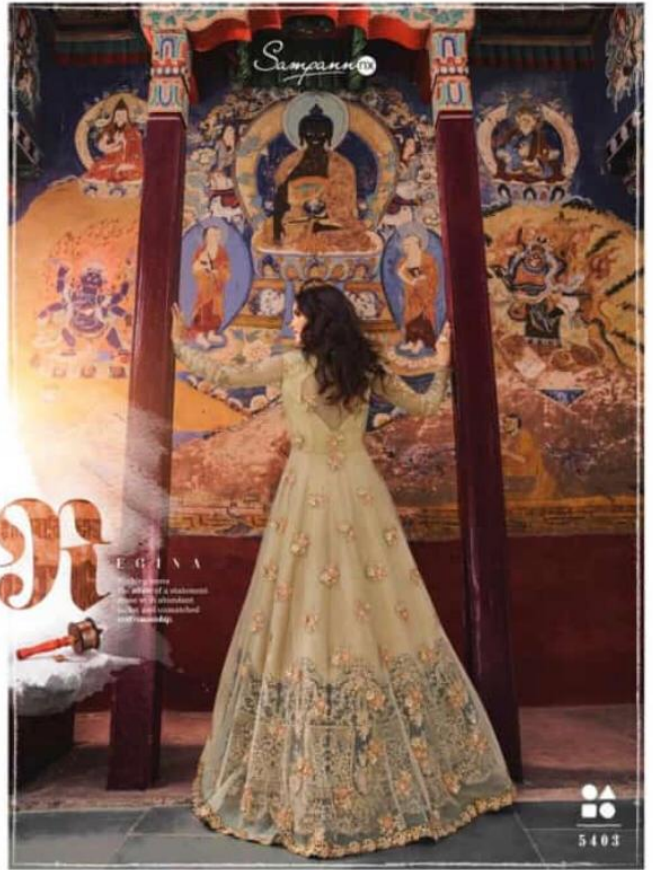
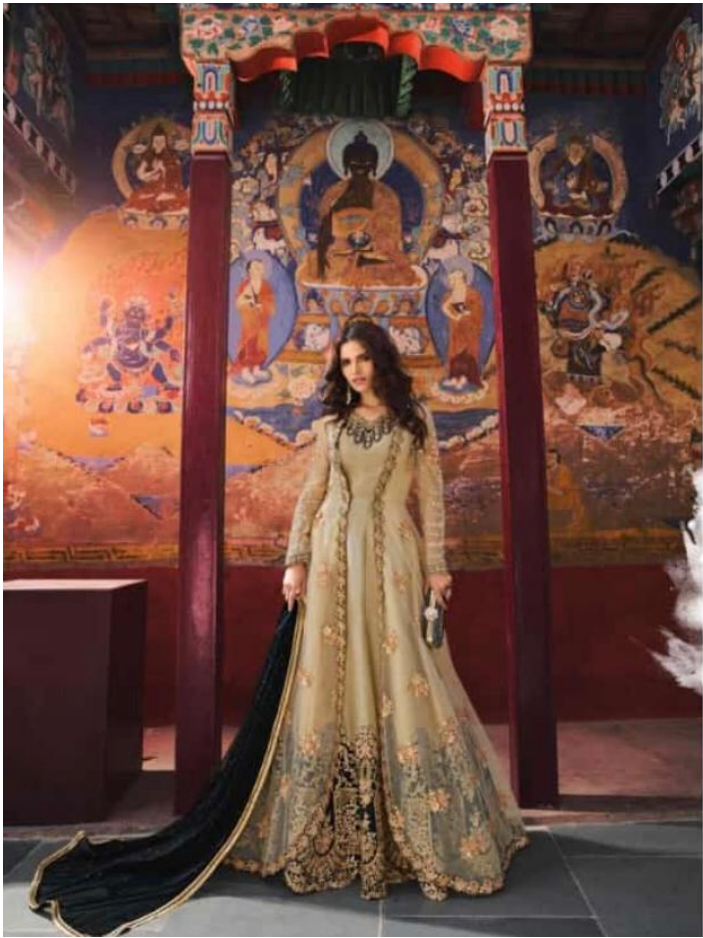
Sampann

SAGA VOL4

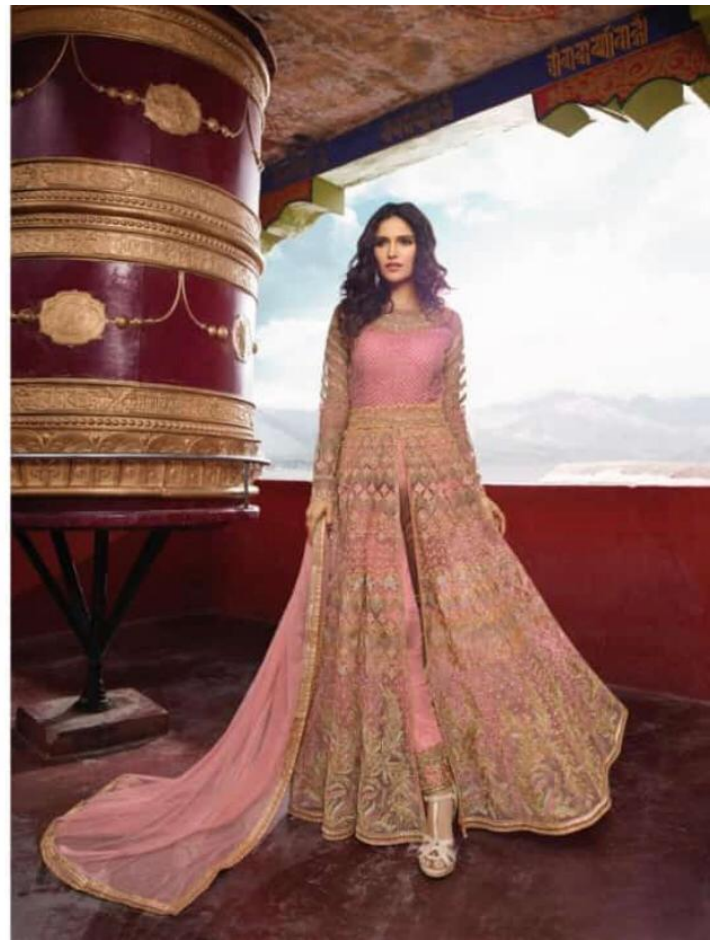
# SAGA

VOL4

Sampannnx











# EISHA

The pastel blue palette gives contrast to the subtle shimmer, while the ornate gold embroidery brings to life a glow and textured beauty of the ensemble.





5481



5482



5483



5484



5485



5486



5487



5488







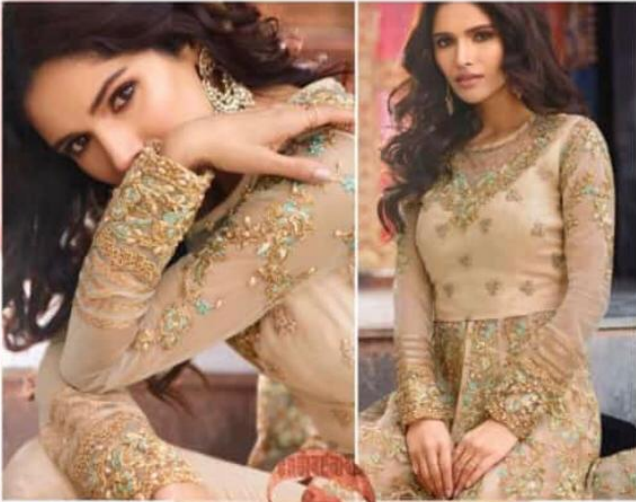
A H A A A

*Symbolizes the first rays of  
the sun, the dawn of a new season and  
new possibilities. The name for this collection  
is **Ladakh**. Every night in **Ladakh**, every child is  
a praying voice to life, the suffering, pain,  
the nature to its most raw and unfiltered  
form is a larger metaphor for this  
journey towards.*

*Sungara*



Sangam 18



IANA

With the lead to our glowing  
embellishments on darts complement  
the new look, the piece adds  
charm to the overall silhouette.



5407



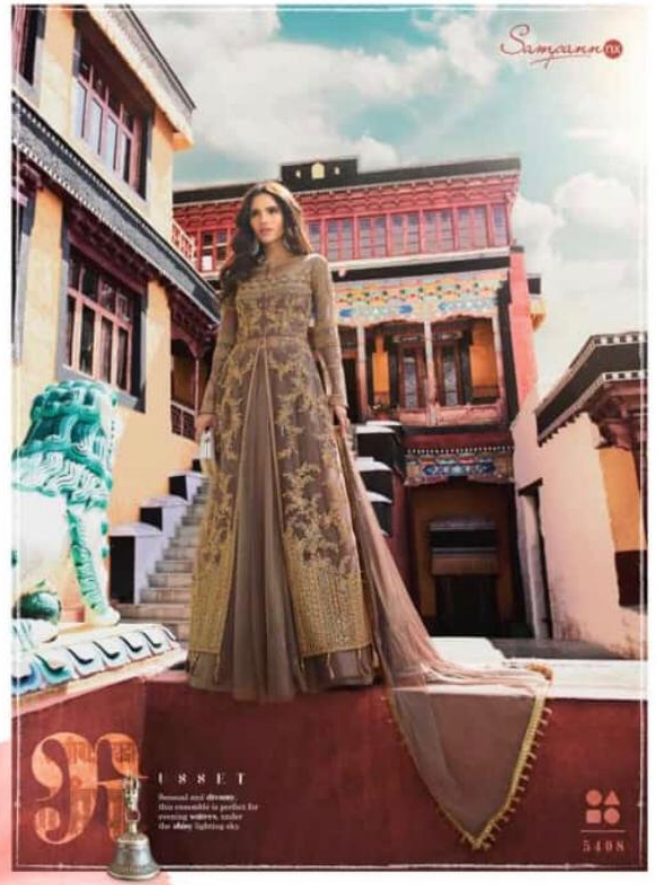


Sanyasi

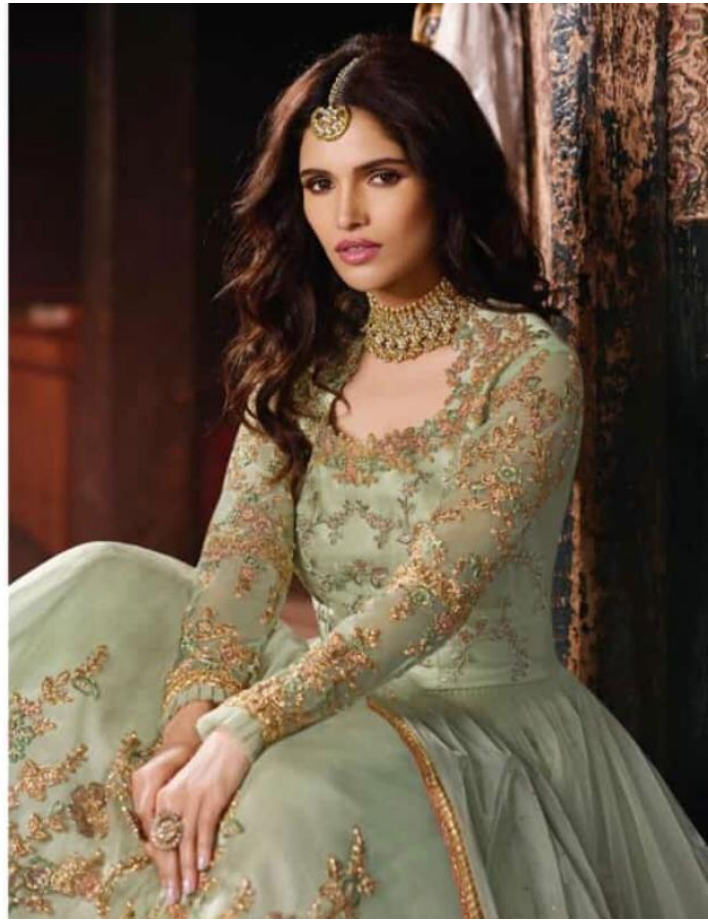
21

ZURE  
Inspired by the Asian  
blue skies and natural  
beauties, the new season  
collection is the perfect  
bridge to today's lifestyle.

5401





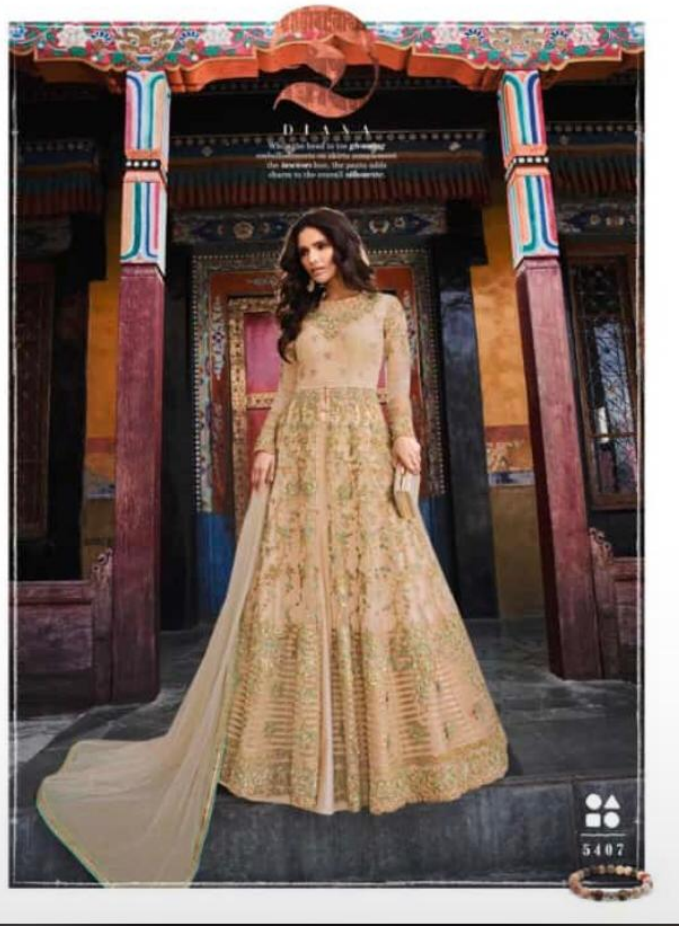
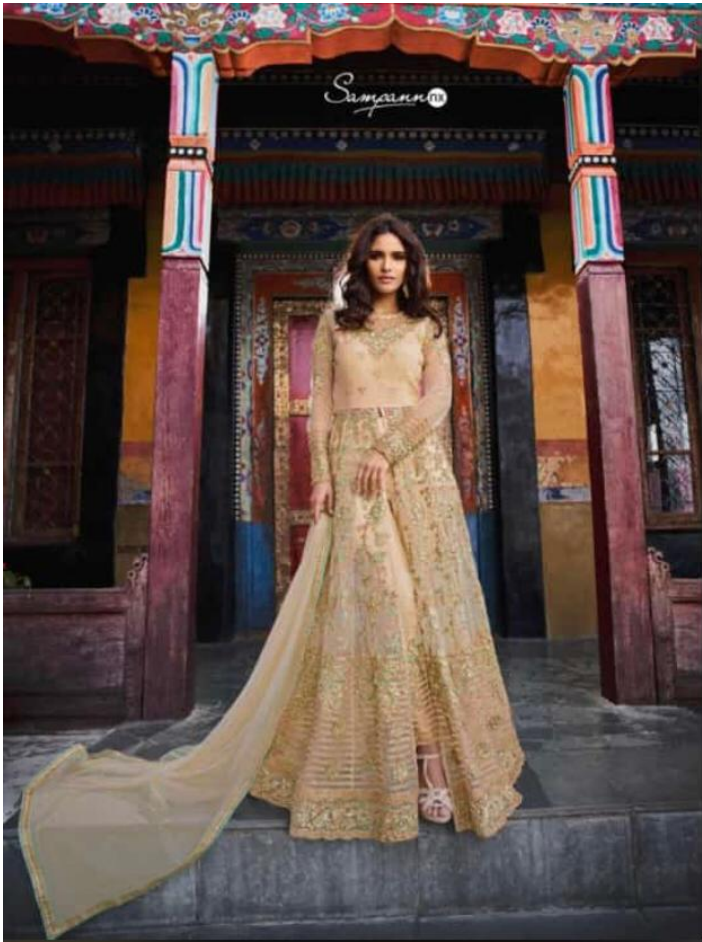


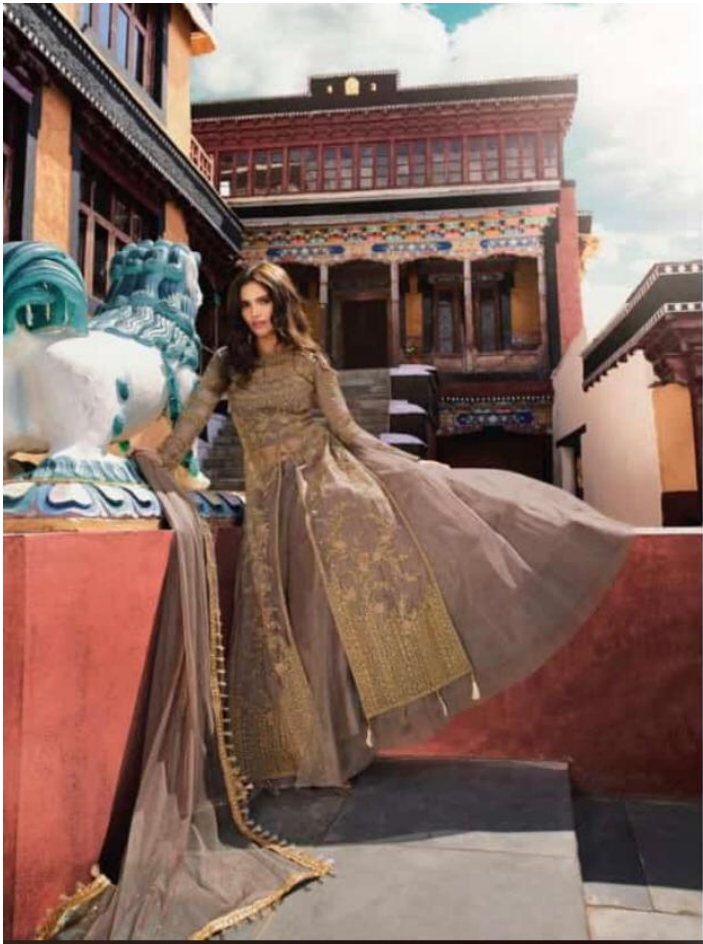


OREI  
The pink ensemble  
exalts the elegance of  
rich colors in contrast  
with the gold embroidery.  
Intricate embroidery  
adorned with gold  
makes it a really  
elegant dress.

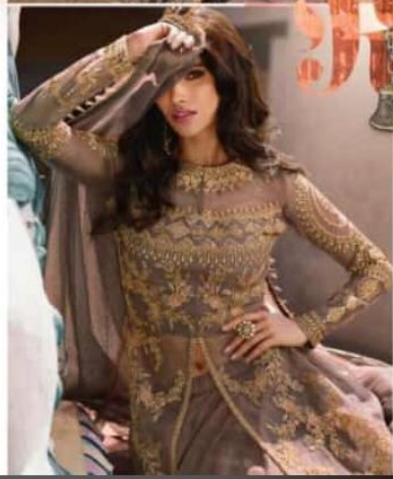
5106







Samsara

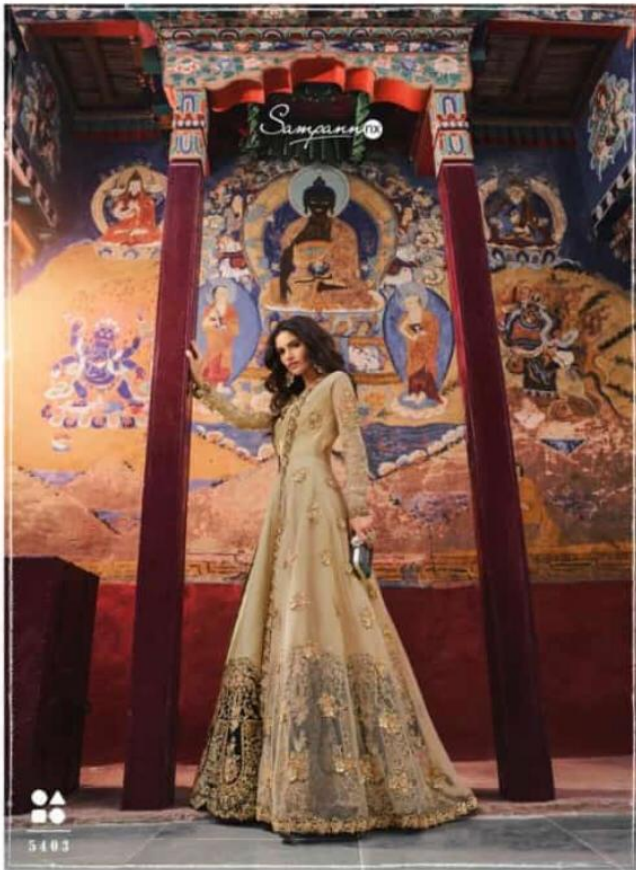


ESSE  
Neutral and dynamic,  
the ensemble is perfect for  
evening matters, under  
the strong lighting also.

5488

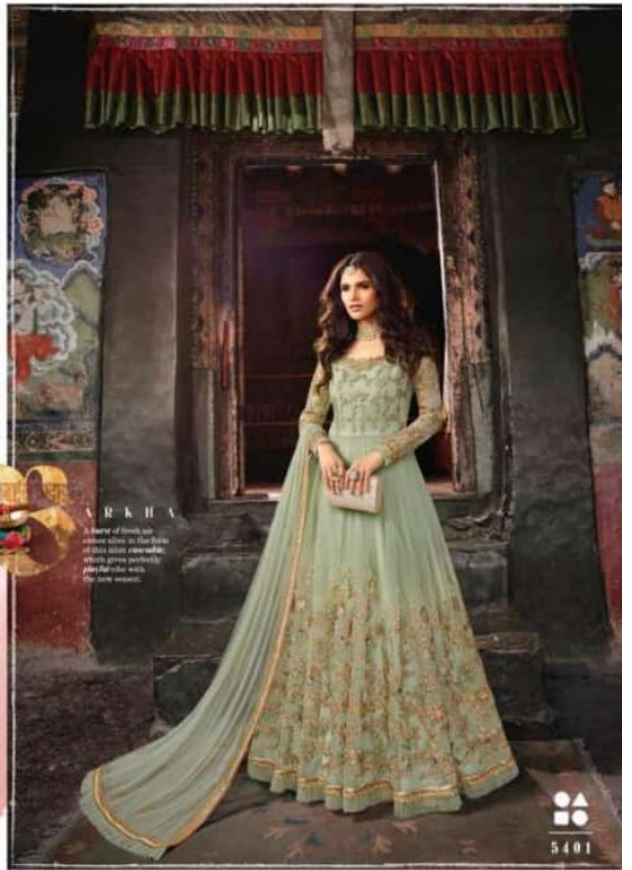






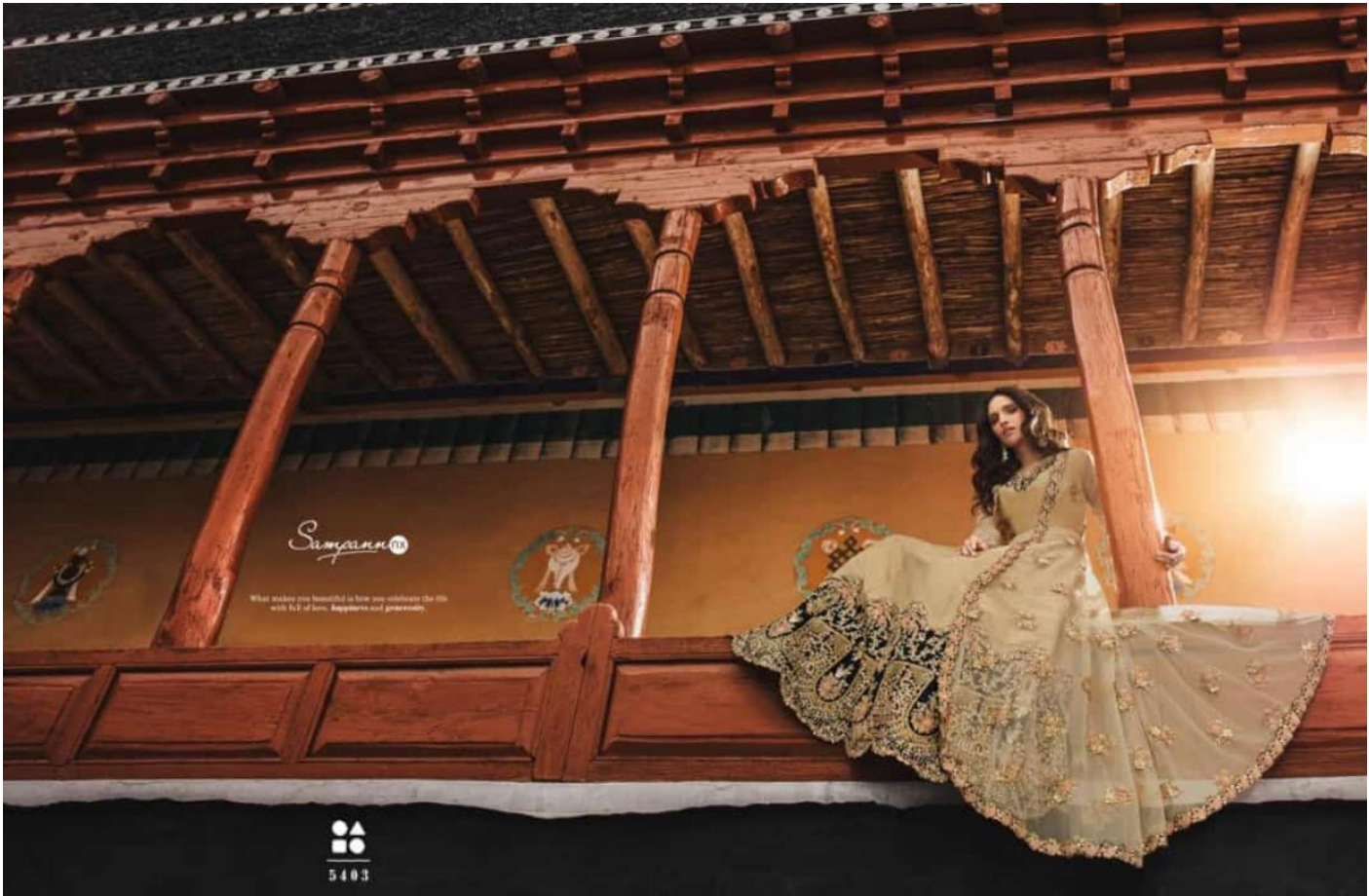












Sriyanna

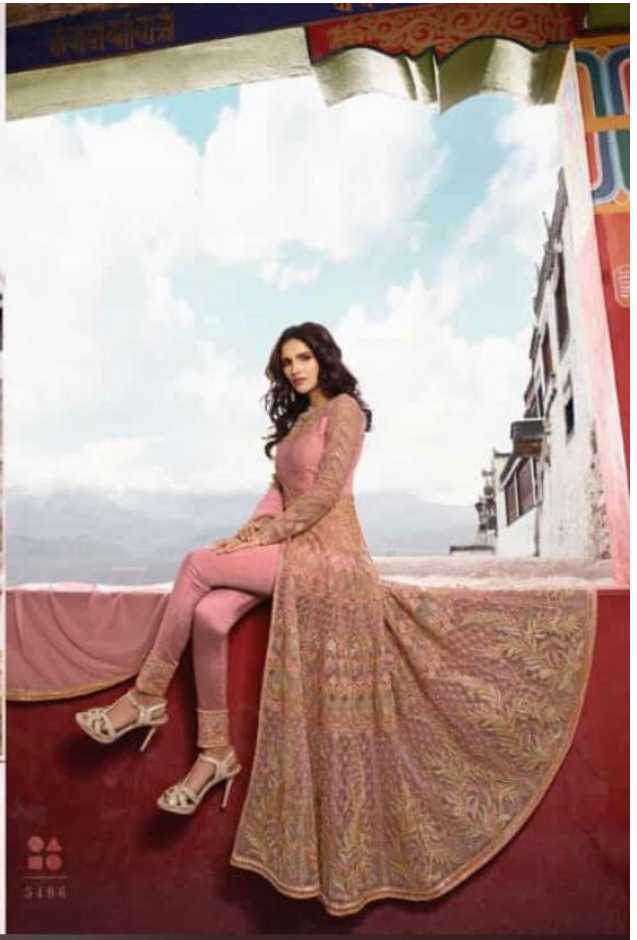
What makes you beautiful is how you embrace the life  
with full of love, happiness and generosity.

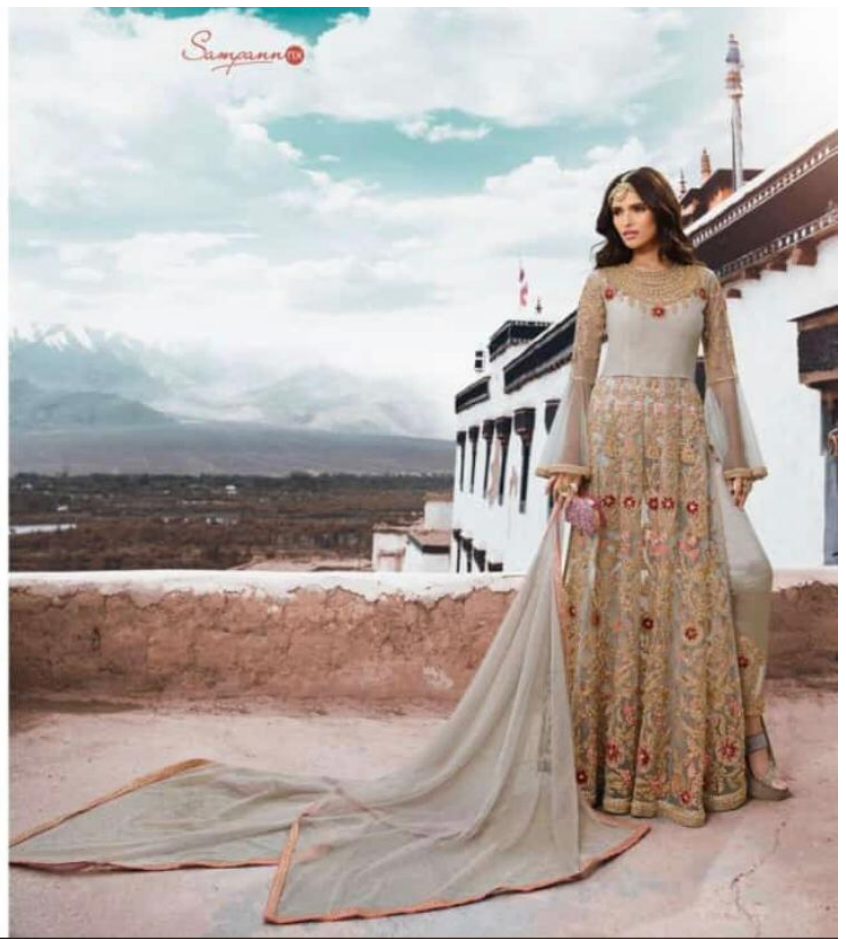
5403





**OREI**  
This pink ensemble  
takes the essence of  
herb motifs in tones  
with the royal embroidery.  
Artistically created  
ensemble embodies  
modern elegance.









Simplicity

What makes you unique is how you see life differently.  
Celebrate each moment with full of love and life.

5405

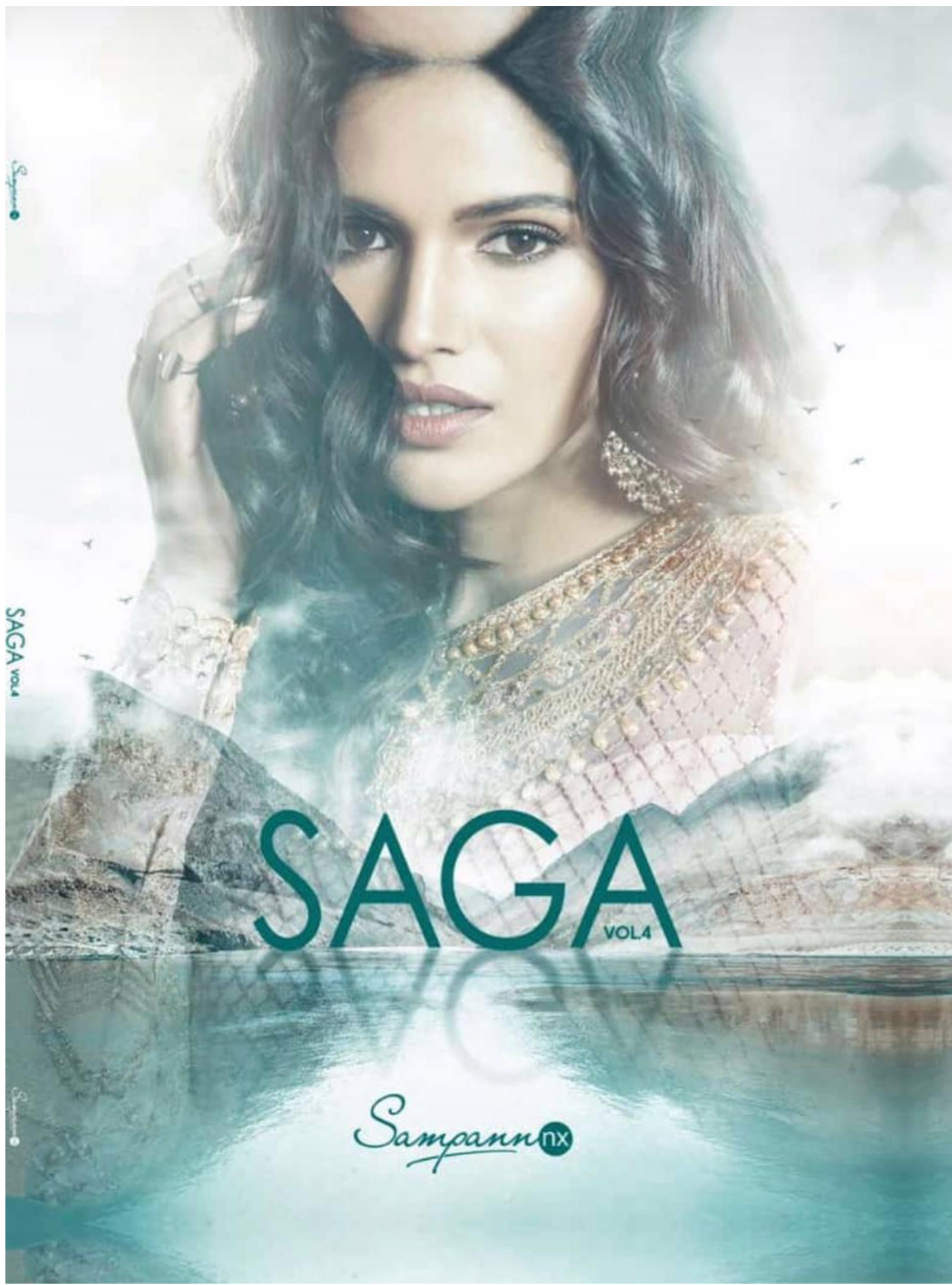


Sungayun®



5408





Sampann

SAGA VOL4

# SAGA

VOL4

Sampannnx