



S-22



S-22





S-26



S-22





903-B



*Rose*  
**Afrozeh Edition**







S-22



*Rose*

**LUXURY LAWN COLLECTION**



TOP- CAMBRIC COTTON HEAVY EMBROIDERY WITH CHIKAN WORK

BOTTOM - COTTON SEMI LAWN WITH PATCH WORK

DUPATTA- TABBY SILK DIGITAL PRINT

**A-01**







# *Rose Blossom Gold*

D.No.10001



TOP- FOX GEROGETTE HEAVY EMBROIDERY WORK

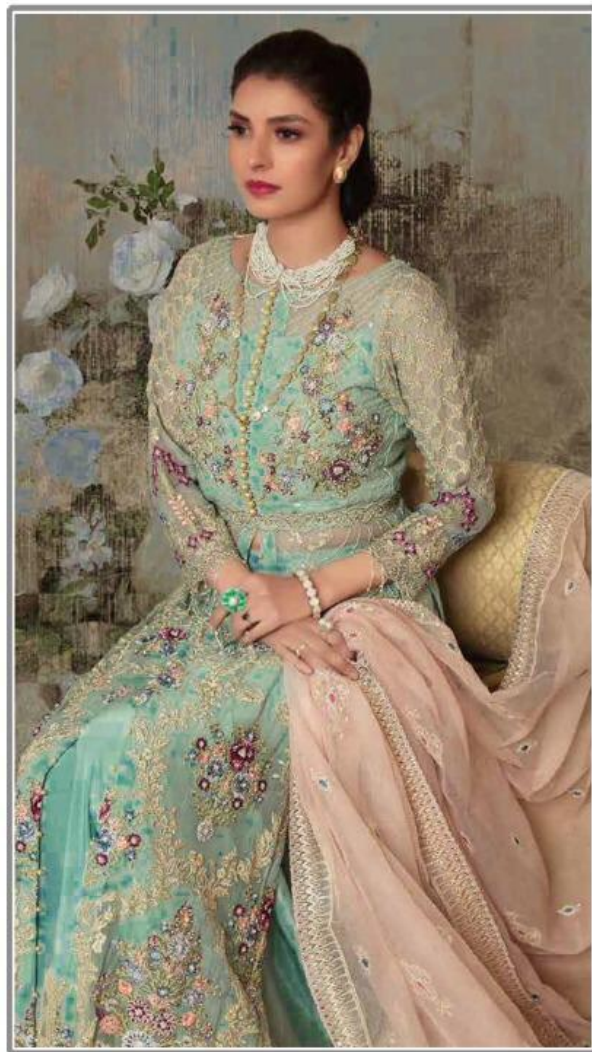
BOTTOM - FANCY PURE JEQUARD

DUPATTA- NAZMEEN WITH EMBROIDERY WORK





**SHANAYA<sup>TM</sup>**



**S 31**











**SHANAYA<sup>TM</sup>**







#### WASHING INSTRUCTION

DO NOT USE ANY TYPE OF BLEACH OR STAIN REMOVING CHEMICALS  
BEFORE CUTTING/STICHING, FABRIC SHOULD BE SOAKED IN WATER  
( ALL COMPONENTS SEPERATELY ) FOR 15 MINUTES  
DO NOT KEEP WET FABRICS IN TWISTED FROM IN ORDER TO AVOID COPY MARKS  
WASH COLOURED AND WHITE FABRICS SEPERATELY  
IRON CLOTHES AT MODERATE TEMPERATURE . DO NOT DRY FABRIC IN DIRECT SUNLIGHT



S 36



SF  
**SHANAYA**<sup>TM</sup>

**D.No.10003**





f :-@shanayafashion99

ig :-@shanayafashion9



**SHANAYA<sup>TM</sup>**



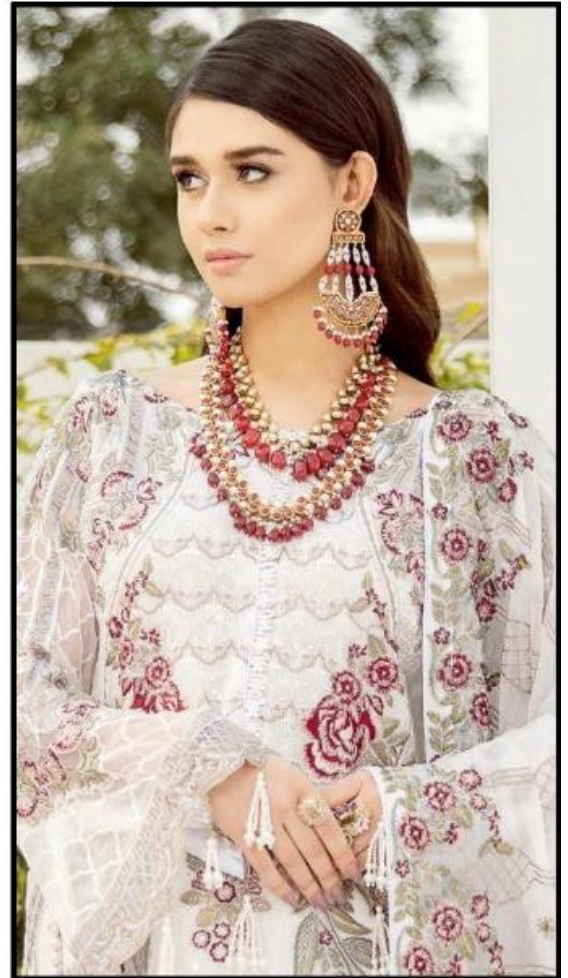
**S 29**







**SHANAYA<sup>TM</sup>**



**S-24**

