



शुभकला

Flory

Vol-22



शुभकला

Flory

Vol-22





ॐ bhkala

4768

This beautiful collection mingles both contemporary style with an amazing galore of colors and ethnicity for every festival.







4761



4762



4763



4764



4765



4766



4767



4768



4769

શ્રીbhkala



Design NO. (SKU)	Gown & Inner Color	Koti Color	Gown Fabric	Koti Fabric	Inner Fabric	Gown Work	Koti Work	SIZE (SEMI - STITCHED)	Top Length INCH	Inner Length MTR	Koti Length
4761	Mustard Yellow	Multi	Cotton	Cotton	Silk Crepe	Sequin Embroidered Work	Thread With Sequin Embroidered	Semi Stitched (Customized from 34 to 46)	58	3	15 INCH
4762	Dusty Green	Multi	Cotton	Cotton	Silk Crepe	Sequin Embroidered Work	Thread With Sequin Embroidered	Semi Stitched (Customized from 34 to 46)	58	3	15 INCH
4763	Light Purple	Light Purple	Cotton	Cotton	Silk Crepe	Sequin Embroidered Work	Thread With Sequin Embroidered	Semi Stitched (Customized from 34 to 46)	58	3	15 INCH
4764	Chiku	Multi	Cotton	Cotton	Silk Crepe	Sequin Embroidered Work	Thread With Sequin Embroidered	Semi Stitched (Customized from 34 to 46)	58	3	15 INCH
4765	White	Multi	Cotton	Cotton	Silk Crepe	Sequin Embroidered Work	Thread With Sequin Embroidered	Semi Stitched (Customized from 34 to 46)	58	3	15 INCH
4766	Rani	Multi	Cotton	Cotton	Silk Crepe	Sequin Embroidered Work	Thread With Sequin Embroidered	Semi Stitched (Customized from 34 to 46)	58	3	15 INCH
4767	Yellow	Rani	Cotton	Cotton	Silk Crepe	Sequin Embroidered Work	Thread With Sequin Embroidered	Semi Stitched (Customized from 34 to 46)	58	3	15 INCH
4768	Peach	Peach	Cotton	Cotton	Silk Crepe	Sequin Embroidered Work	Thread With Sequin Embroidered	Semi Stitched (Customized from 34 to 46)	58	3	15 INCH
4769	Dusty Orange	Multi	Cotton	Cotton	Silk Crepe	Sequin Embroidered Work	Thread With Sequin Embroidered	Semi Stitched (Customized from 34 to 46)	58	3	15 INCH

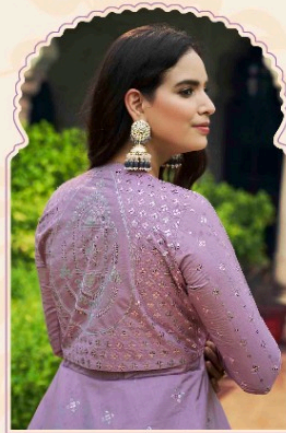
DUPATTA NOT AVAILABLE. • CAN-CAN NOT AVAILABLE. • FULL STITCHING AVAILABLE.

KOTI – STITCHED (42-XL SIZE). (ONLY KOTI STITCHED)





Swastika bhkala®



This beautiful collection mingles both contemporary style with an amazing galore of colors and ethnicity for every festival.

4763



Swastika bhkala®

A close-up photograph of the same woman, shown from the waist up, with her hands on her hips. She is wearing the same green and red patterned dress. The background is a light beige color with a subtle floral pattern.

This beautiful collection mingles both contemporary style with an amazing galore of colors and ethnicity for every festival.

4762







ॐ bhkala

4765

This beautiful collection mingles both contemporary style with an amazing galore of colors and ethnicity for every festival.





4766



bhkala



This beautiful collection mingles both contemporary style with an amazing galore of colors and ethnicity for every festival.

4767



शुभकला



This beautiful collection mingles both contemporary style with an amazing galore of colors and ethnicity for every festival.

4762



शुभकला

*This beautiful collection mingles both contemporary style with
an amazing galore of colors and ethnicity for every festival.*

4763





This beautiful collection mingles both contemporary style with an amazing galore of colors and ethnicity for every festival.

4761



शुभकला

Flory

Vol-22



ॐ bhkala

